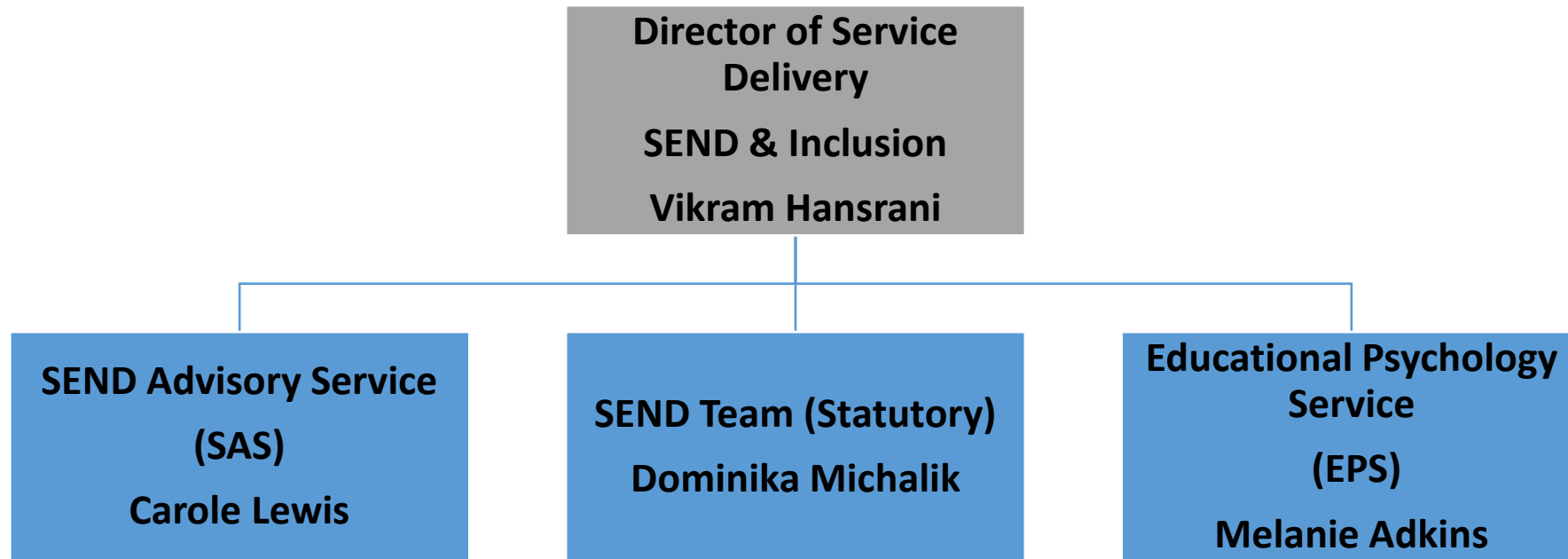




HILLINGDON
LONDON



Everyone's Business



Review of SEND Pathways

Framework to support the early identification of SEND (developed by SAS)

Ordinarily Available Provision (OAP) (co-produced by schools and the EPS)

MSP

SEND Advisory Service (SAS)

Early Support Funding

Resource through professionals

SEND Service

EHCP

From 0

To 25



First 1,000 Days

Stronger Families

Transition from Children's to Adult SC

Family Hubs

"Culture of Inclusion"

0-19 Healthy Child Programme



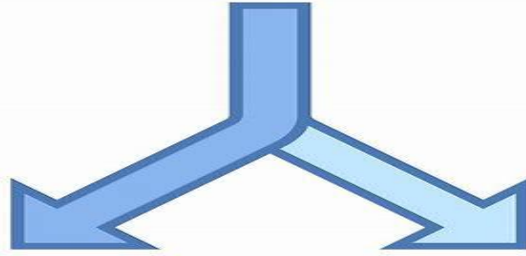
Inclusion



Non-Statutory Funding Guidance 2021

Early Support Funding (ESF)

ESF is the process Hillingdon uses to allocate High Needs Block Funding for individual children who have significant barriers to learning and so require special educational provision which costs more than the nationally prescribed threshold. It is for children whose needs are best met within a mainstream provision but who require resources outside of what is 'ordinarily available'.



Education & Health Care Plans are only for C/Y/P with severe and long-term needs with significant barriers to learning

SEND Exceptional Funding (SENDEX)

SENDEX is allocated from the High Needs Block and is reserved for applications from settings where children/young people are presenting with **exceptional** and **unexpected** circumstances and their needs have not been fully identified due to unknown factors. The amount of SENDEX funding will be allocated using the EHCP banded model.

Rapid process - less than 2 weeks from application to decision

Allocated SAS specialist advisor

Counts towards 3% EHCP threshold

'It has been so helpful to speak to the SAS Inclusion team about applications that have both passed and failed. I often seek out the advisors to talk about next steps, evaluate progress and ensure things are going well for our children.'

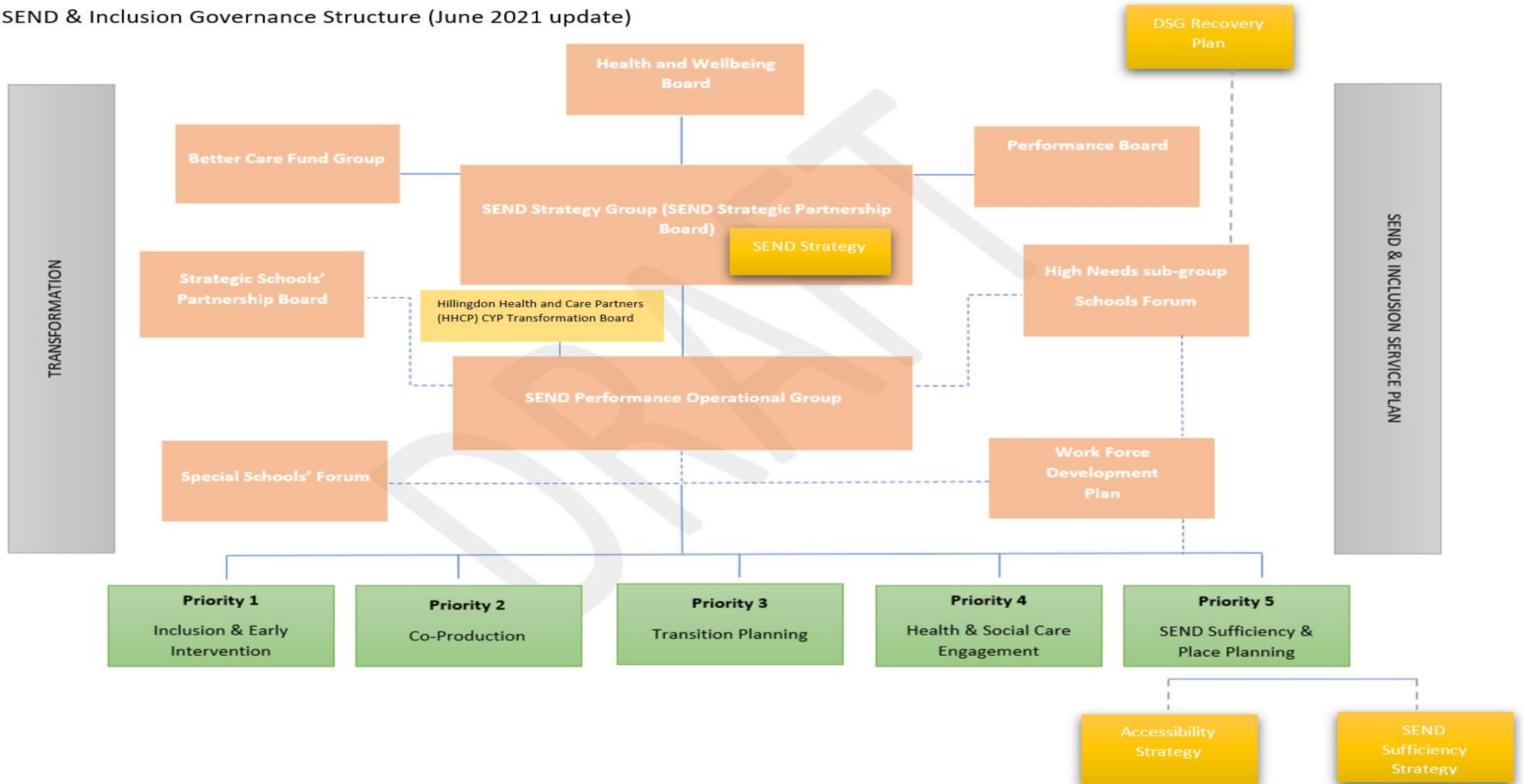


SEND Governance



Partnership Engagement

SEND & Inclusion Governance Structure (June 2021 update)



Priority Group 1: Inclusion & Early Intervention

- *working closely with education settings to help them build capacity and confidence in meeting the needs of children and young people with SEND*

Priority Group 2: Coproduction

- *responsibility for co-production at all stages in the planning, commissioning, delivery and monitoring of support and services for SEND, including the Local Offer*

Priority Group 3: Transition Planning

- *responsibility for: multi-agency collaboration for children and young people in transition and the delivery of the Preparing for Adulthood (PfA) agenda*

Priority Group 4: Health & Social Care Engagement

- *Ensuring collaboration and joined up working across education, health & social care. Clear pathways to ensure C/YP with SEND & their families have their needs identified and addressed through a coordinated approach.*

Priority Group 5: SEND Sufficiency & Place Planning

- *To respond to increases in demand for provision for pupils with SEND, supporting more C/YP to be educated in mainstream schools. Ensuring different types of provision are available, and also that the right support is provided at the right time.*

‘Deep-Dives’ by SEND Partnership Board, analysing the feedback on activity and outcomes achieved



SEND GOVERNANCE

Review Guide



SEND REVIEW GUIDE

A school-led approach to improving provision for all



PREPARING FOR ADULthood FROM THE EARLIEST YEARS

Review Guide



MAT

SEND Review Guide



SEND Reviews

SEND REFLECTION FRAMEWORK



EFFECTIVE SENCO DEPLOYMENT

A guide for the SENCOs and their line managers



TA DEPLOYMENT REVIEW GUIDE

A school-led approach to improving provision for all



DEMONSTRATING INCLUSION TOOL

Every Leader is a Leader of SEND
A collaborative tool to enable all leaders to understand and demonstrate inclusion in their settings



Inclusion Commitment

- Supported SEND review - Whole school / setting approach to improving SEND provision - developed in collaboration with NASEN / Whole School SEND – No cost to school (£1500 if through NASEN)
- 1 year programme of support - developed in collaboration with the school/setting
- Data driven - schools/settings identified through data – invitation to collaborate
 - ◆ Exclusions
 - ◆ Attendance
 - ◆ Progress for children with SEND
 - ◆ Feedback from partnership services
- Evidence informed evaluation and practice
 - ◆ Autism Education Trust
 - ◆ The Communication Trust
 - ◆ SCERTS

SEND Reviews

84/94 89% PVI's by Summer of 2023

54/68 85.2% Primary Schools by Summer 2023

17/22 77% Secondary schools by Summer 2023



SAS Advice Line

Would you like some advice/ideas/strategies to support a child or young person with SEND?

The SEND Advisory Service Advice Line is here for all general enquiries, support, and advice. We're able to help or signpost for all things SEND, and would welcome your email to one of the following email addresses. If unsure which team, please just email one of them and it'll be allocated appropriately.

We aim to get back to you within 48 hours.

I need some advice around supporting a child with a visual impairment

I need help with completing a child's individual risk assessment

My child has just received a diagnosis, what do I do next?

I want to apply for funding, where do I start?



saskeywork@hillingdon.gov.uk - providing support and guidance for families with SEND 0-25

sasinclusion@hillingdon.gov.uk - providing support and guidance to schools, settings, PVI's for children and young people aged 2 and above

sassensory@hillingdon.gov.uk - providing support for children and young people with sensory impairment needs



Please spread the word to all staff and families and put a copy of the SAS Advice Line poster up in your staffroom.

[SAS Advice Line](#)

SEND - EHCPs

→ EHC needs assessments completed within 20 weeks:

2021 year-to-date **81%**

2020 - **34%**

2019 - **23%**



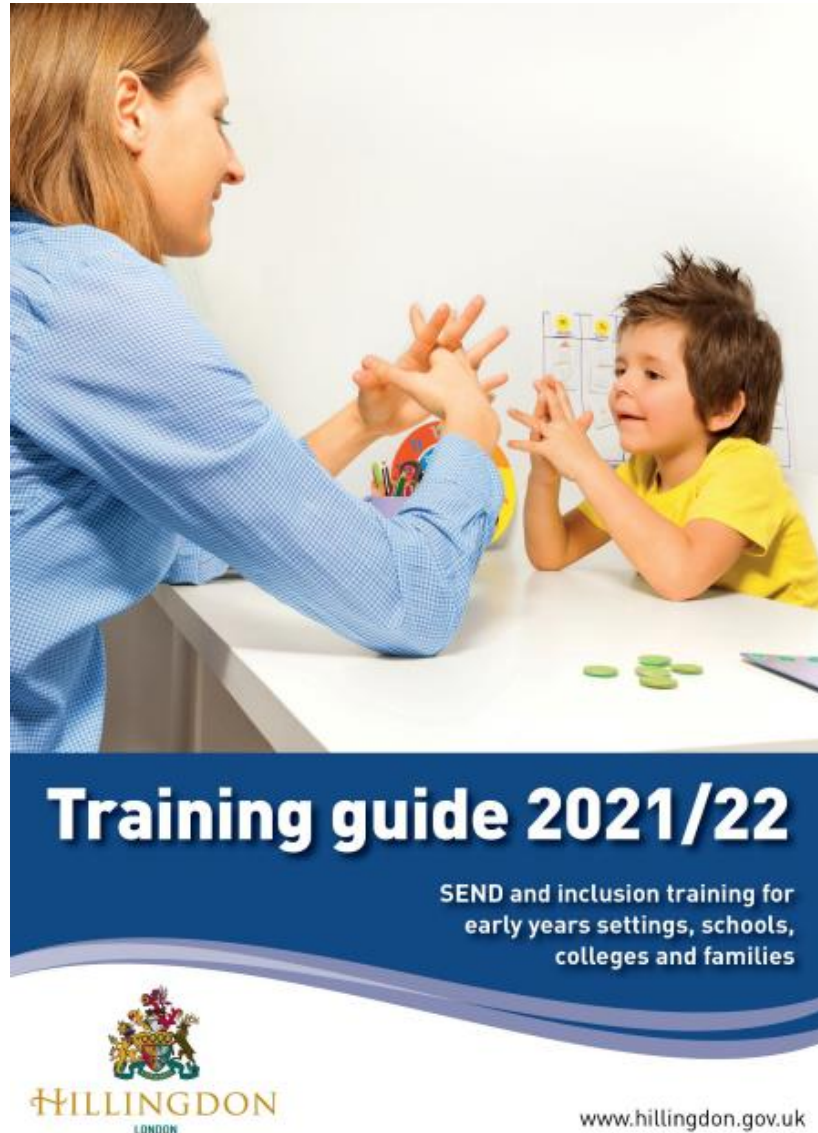
→ Phase Transfer 2020-2021:

96% of population moving from one phase to another in readiness for September 2021 by February 2021 deadline



TRAINING

Training Brochure 2021-22



[Training Guide 2021/22](#)

OR

Via the SEND & Inclusion Newsletter

Targeted Training Wishlist Deadline
22nd October 2021

**Settings that have registered their interest
will hear back following the deadline.**

Training - SEND Survival

These sessions will be interactive and will include you bringing examples from your settings for you to receive tailored feedback.

Roles and responsibilities of the Senco	14th September 2021	2-3.30pm
Managing effective support	18th October 2021	2-3.30pm
Inclusive Practise	15th November 2021	2-3.30pm
Phase transfer	14th December 2021	10 - 11.30am
Working with CYP and families	17th January 2022	10 - 11.30am
School Support - cascading SEND knowledge	24th February 2022	1-2.30pm
Annual reviews	21st March 2022	2-3.30pm
Managing Finances	21st April 2022	10-11.30am
Legal Focus	24th May 2022	10-11.30am

Booking details

Please use the 'SENCO Survival Course' link to add your name to the Attendance tab so that materials can be shared with you and access the Teams Link for each session.

In the interim these will be virtual, but after Christmas we will take note of any guidance and determine if we can host any workshops face to face.

[Senco Survival Course.xlsx \(sharepoint.com\)](#)

SENCO Drop Ins

The SEND team will be organising a SENCO drop-in sessions where the SEND Team Managers and Senior SEND officers will be available for you to virtually drop-in and talk to us about:

- Provision maps
- Case updates
- Application for EHC needs assessment checking
- Interventions/support

These will be held after school, 2-4pm, on a monthly basis.

First one will be 8th November

https://teams.microsoft.com/l/meetup-join/19%3ameeting_MGEyMDY0MTMtNTc4OC00Zjg0LTg1MmEtNjk2ZTA1YjAyZDc2%40threa79-c381-48fb-b320-f9d581ee948f%22%2c%22Oid%22%3a%2297fb2e0a-7b4e-4541-9ed4-e9





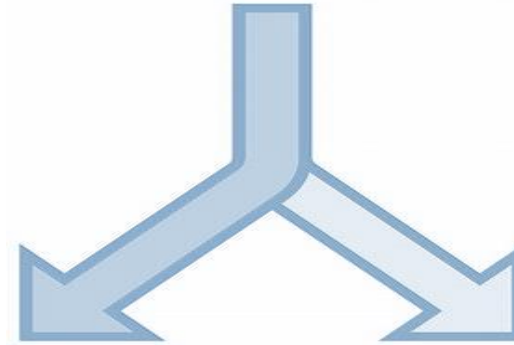
contact
us



CHOICE

Help

SAS Service Manager Carole Lewis



Team Manager EY / Schools / Post-16

Heenal Cara (Amin)
hamin@hillingdon.gov.uk

Team Manager Keyworking / Sensory

Priya Perera
pperera@hillingdon.gov.uk

EY Principal SEND Advisor

Sandy Atwal
satwal@hillingdon.gov.uk

Senior Keyworker

Debbie Frank
dfrank@hillingdon.gov.uk





SEND Team

Contact information & School allocation;

[SEND Primary schools list.xlsx](#)

Annual reviews should be sent to;

senannualreviews@hillingdon.gov.uk

Tia Sohi – SEND team manager up to year 9

tsohi@hillingdon.gov.uk

Kathy Stevens – Senior SEND case officer up to year 9

kstevens@hillingdon.gov.uk

Marie Holmes – Senior SEND case officer from year 9

mholmes@hillingdon.gov.uk

Sonal Sisodia – SEND team manager from year 9

ssisodia@hillingdon.gov.uk

SEN panels – sign up here >



[SEND panels](#)