

Head Teachers' Termly

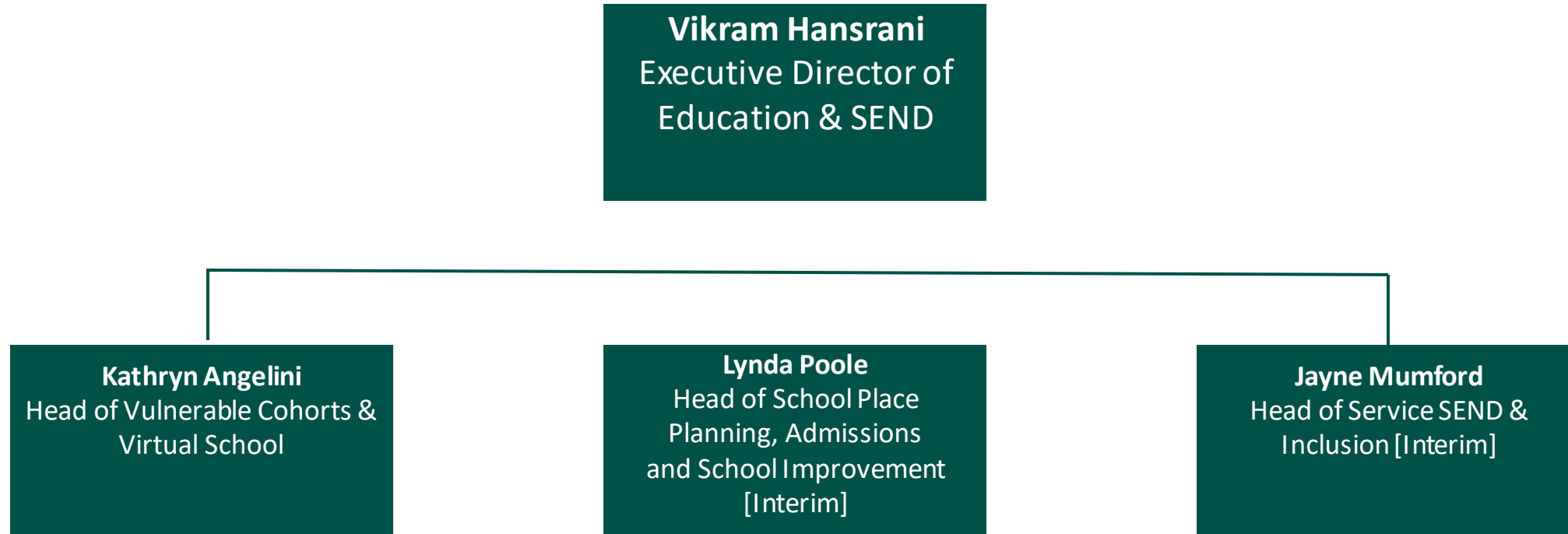
Autumn 2022

Friday 11th November 2022

Agenda for the morning

09:30	Welcome & Introductions	Vikram Hansrani Executive Director of Education & SEND
09:35	SEND Safety Valve update	Vikram Hansrani Executive Director of Education & SEND
09:50	Education Advisors roles and working with schools	Lynda Poole Head of School Place Planning and Education Improvement & Partnerships (Interim) Michael Hawkins Service Manager - Education Improvement & Partnerships (Interim)
10:00	SATs/GCSE/A Level Analysis 2022	Michael Hawkins Service Manager - Education Improvement & Partnerships (Interim)
10:10	Ofsted Inspections update	Rob Jones Headteacher, Haydon School
10:20	Safeguarding update	Alex Coman Director of Service Deliver - Safeguarding, Partnership & Quality Assurance Antony Madden Head of Service - First Response, MASH and Out of Hours Social Work
10:30	Close	Vikram Hansrani Executive Director of Education & SEND

Education Directorate – Senior Officers



Education Directorate – Areas of Focus



DSG Safety Valve Update

Dedicated Schools Grant (DSG) Safety Valve Agreement Update

Context

The London Borough of Hillingdon (LBH) agreed a deal with the Department for Education (DfE) in March 2022 to which LBH committed to achieving a **positive in-year balance** on the DSG by **2024-25** and in each subsequent year.

LBH have committed to reduced the cumulative deficit as follows:

Year	Forecast DSG Deficit Profile at year end (£m) (LBH commitment)	Contribution from DfE (£m)
2021-22	£33.80	£11.00
2022-23	£34.70	£3.75
2023-24	£33.00	£3.75
2024-25	£28.30	£3.75
2025-26	£22.60	£3.75

Subject to full compliance, Hillingdon should therefore eliminate their **cumulative deficit** no later than **2025-26**

Dedicated Schools Grant (DSG) Safety Valve Agreement Update

Key Areas of Work (Conditions as listed within the DSG management plan)

Standardise good practice and inclusivity across the mainstream sector by promoting the use of **SEND self-reviews**;

Continue the use of **'Early Support Funding'**, to promote early intervention and reduce the escalation of children's needs;

Further progress integrating a process of **reviewing existing EHCPs**;

Further develop and implement a new **Early Health Notification Process**, to improve the identification of SEND from birth to ensure appropriate services and support are provided in a timely manner;

Continue **developing temporary and permanent provisions** for SEND through Hillingdon **capital**, in conjunction with effective use of capital grants;

Continue **reviewing all placements in independent and non-maintained** schools to optimise the use of mainstream settings

Explore different models for **alternative provision** and continue to review existing commissioned places;

Conduct a **review of banding arrangements**;

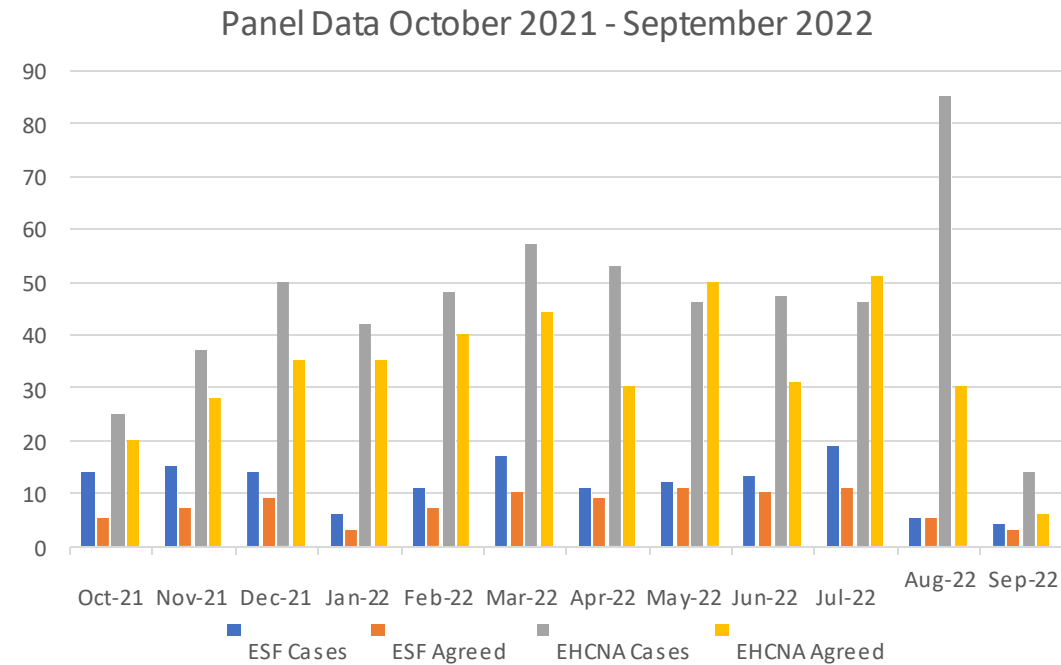
Further **increase the educational psychology service**, to increase systematic, pre-statutory support to settings;

Regularly **meet with the school forum and the DSG delivery group** as part of the revised school engagement approach.

Review **healthcare contributions** for children and young people with EHCPs

Dedicated Schools Grant (DSG) Safety Valve Agreement Update

1 – Continue the use of 'Early Support Funding', to promote early intervention and reduce the escalation of children's needs



Dedicated Schools Grant (DSG) Safety Valve Agreement Update

2 – Continue developing temporary and permanent provisions for SEND through Hillingdon capital, in conjunction with effective use of capital grants;

Stage	Project/ School Name	Designation	Phase	Places Added	Places Added Q3	From	Possible Delays
Completed	Pride Academy	SEMH	Secondary	45		Apr-22	
Completed	Satellite of Moorcroft/ Grangewood	SLD/PMLD/ ASD	Primary & Secondary	40		Sep-22	
Completed	Independent Post 19 College	SLD/PMLD/ ASD	FE	50		Sep-22	
Agreed	Meadow School Expansion Phase 1	ASD/MLD	Secondary	98		Sep-23	
Agreed	Assessment Nursery	Mix	Primary	32		Sep-23	
Agreed	ASD SRP x2	ASD	Primary	24	28	Sep-23	
Agreed	Harlington ASD Unit	ASD	Secondary	15		Sep-23	
Agreed	ASD Unit	ASD/MLD	Primary	24		Sep-23	
Agreed	Grand Union Village	ASD & Complex Needs	Primary	80		Sep-24	
Agreed	Pinn River	ASD & Complex Needs	All through	180		Sep-24	Jan-25
Agreed	ASEND	Mixed	ALL	24			
Potential	Bishop Arden ASD unit	ASD	Secondary	21		Sep-24	On Hold
Potential	New Special Free School Bid	ASD & Complex Needs	All through	180		TBC	Application submitted
Potential	Agree permanent status beyond 2024 of the temporary Unit used by Eden Trust 2022-24.	SLD/PMLD/ ASD	Primary & Secondary	TBC		Sep-24	

Dedicated Schools Grant (DSG) Safety Valve Agreement Update

- LBH are required to provide quarterly updates to the DfE on the progress of the plan.
- Quarter 2 (June, July, August 2022 progress) was submitted in September 2022 – funding was subsequently provided
- **Quarter 3** (September, October, November) will be submitted in December 2022

Risks:

- Uptake in Early Support Funding
- Shortages in special list settings locally are resulting in more pupils accessing INMSS provision
- Cost of INMSS provision is increasing
- Cost on construction