

Hillingdon Headline Data



2022

URN/ Estab. Setting Name	Eligible	● Avg. Total GLD ^{1,2} Pts.Score ²	ACHIEVED EXPECTED										● Specific Goals	● All Goals
			● COM	● PSE	● PHY	● Prime Goals	● LIT	● MAT	UTW	EXP				
- NCER National	615,900	65.2%	31.1	79.5%	83.0%	84.8%	74.2%	68.0%	75.9%	79.6%	84.5%	64.9%	63.4%	
- DfE Region - DfE Region - London	96,220	67.8%	31.1	79.1%	83.3%	85.6%	74.8%	70.4%	77.2%	78.9%	84.4%	67.1%	65.7%	
- Local Authority	2,914	64.0%	30.6	76.8%	80.9%	84.8%	73.2%	66.0%	74.2%	74.6%	80.2%	61.9%	60.9%	



HILLINGDON
LONDON



Phonics Benchmark

2022

Estab. No.	Estab. Name	Cohort	Mark					APS	Outcome					
			No Score	0-15	16-23	24-31	32-36		37-40	Q	A	D	WT	WA
-	NCER National	630,370	2.8%	9.7%	5.1%	6.9%	30.6%	44.9%	32.3	0.0%	0.4%	2.4%	21.7%	75.5%
-	DfE Region - DfE Region - London	95,710	3.4%	8.8%	4.2%	5.5%	29.4%	48.7%	32.9	-	0.3%	3.1%	18.4%	78.2%
-	Local Authority	3,164	1.9%	8.5%	4.7%	5.3%	31.3%	48.3%	33.0	0.0%	0.3%	1.8%	18.3%	79.6%



HILLINGDON
LONDON



KS1 Summary List

Estab. No.	Establishment	Cohort **	READING			WRITING			MATHS			RWM*		RWMS*
			<EXS	≥EXS	GDS	<EXS	≥EXS	GDS	<EXS	≥EXS	GDS	≥EXS	GDS	≥EXS
- NCER National		633,720	32.8%	66.9%	18.0%	42.0%	57.6%	8.0%	32.1%	67.7%	15.1%	53.4%	5.9%	53.0%
- DfE Region - London		96,570	29.3%	70.3%	21.6%	36.9%	62.7%	11.7%	28.6%	71.0%	19.7%	58.7%	9.0%	58.3%
- Local Authority		3,520	29.3%	70.3%	20.7%	39.2%	60.4%	8.9%	27.7%	71.9%	20.3%	56.3%	7.2%	56.0%



Overview

LA KS2 Attainment 2022 · Actual results

4005 pupils

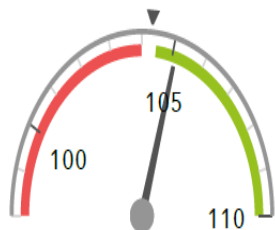
Average Scaled Score (Re, Ma)

% Expected standard+ (Re, Wr, Ma)

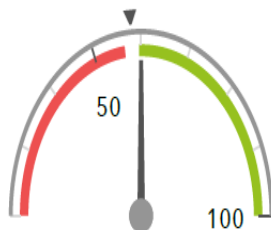
DFE

105.1 +

60% +



Significantly above the national average (104.3) ◀



Significantly above the national average (58%) ◀

LA KS2 Progress 2022 · Value Added

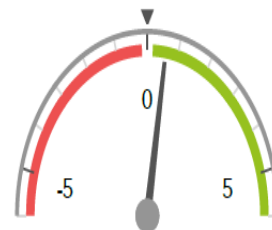
3702 matched pupils

Average Scaled Score (Re, Ma)

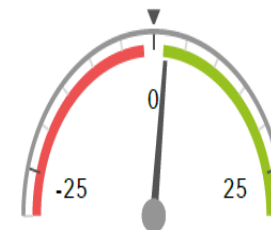
% Expected standard+ (Re, Wr, Ma)

+0.6 +

+2% +



Significantly above the national average (0) ◀



Significantly above the national average (0%) ◀

Attainment & progress

LA KS2 Attainment 2022

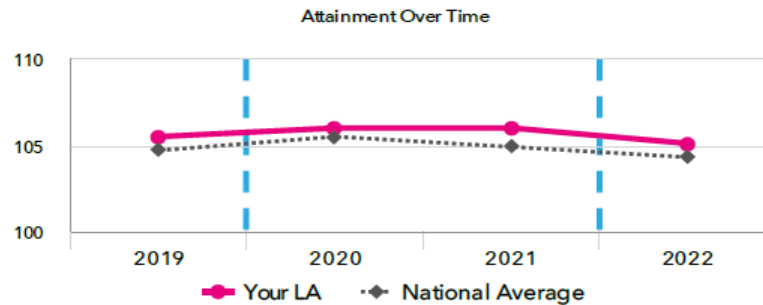
4005 pupils

Average Scaled Score (Re, Ma)

105.1 +



Significantly above the national average (104.3)



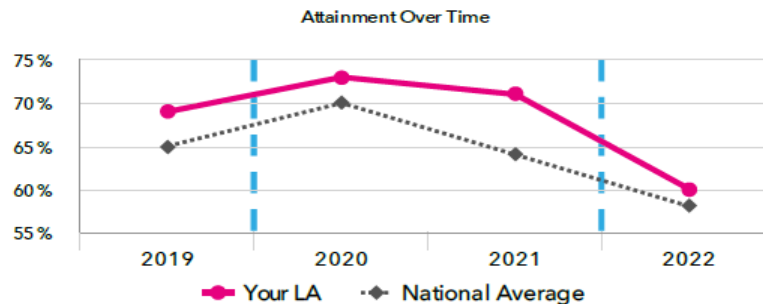
% Expected standard+ (Re, Wr, Ma)

DFE

60% +



Significantly above the national average (58%)



LA KS2 Progress 2022

3702 matched pupils

Average Scaled Score (Re, Ma)

+0.6 +



Significantly above the national average (0)

% Expected standard+ (Re, Wr, Ma)

+2% +



Significantly above the national average (0%)

LA KS2 higher and lower performing pupil groups 2022

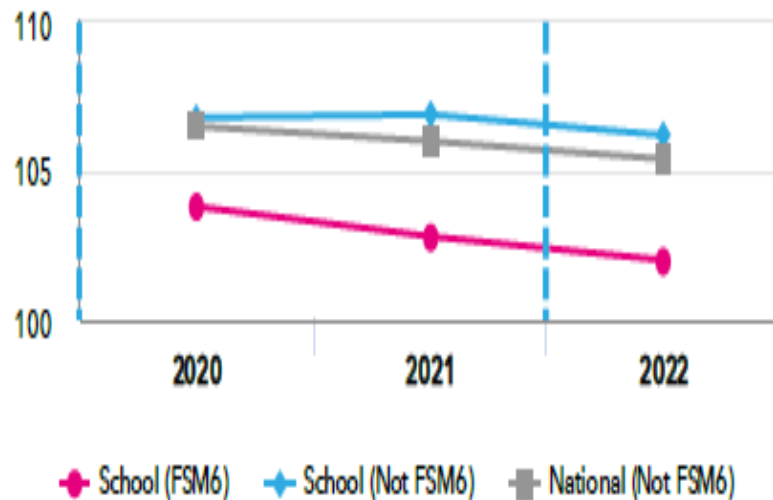
	Higher performing	Lower performing
Overall achievement pupil progress	Other Asian (278) ⁺ Bangladeshi (61) ⁺ Indian (637) ⁺ Pakistani (207) ⁺ First language not English (1744) ⁺	EHC Plan (227) ⁻ FSM (845) ⁻ Unknown (56) FSM (ever) (993) ⁻ FSM (in last 6 years) (978) ⁻



Disadvantaged pupils

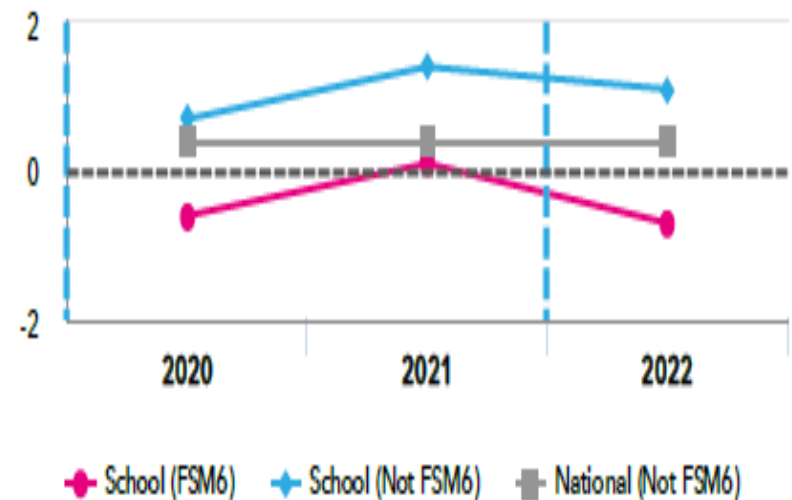
LA KS2 attainment for disadvantaged pupils 2022

Average Scaled Score (Re, Ma)

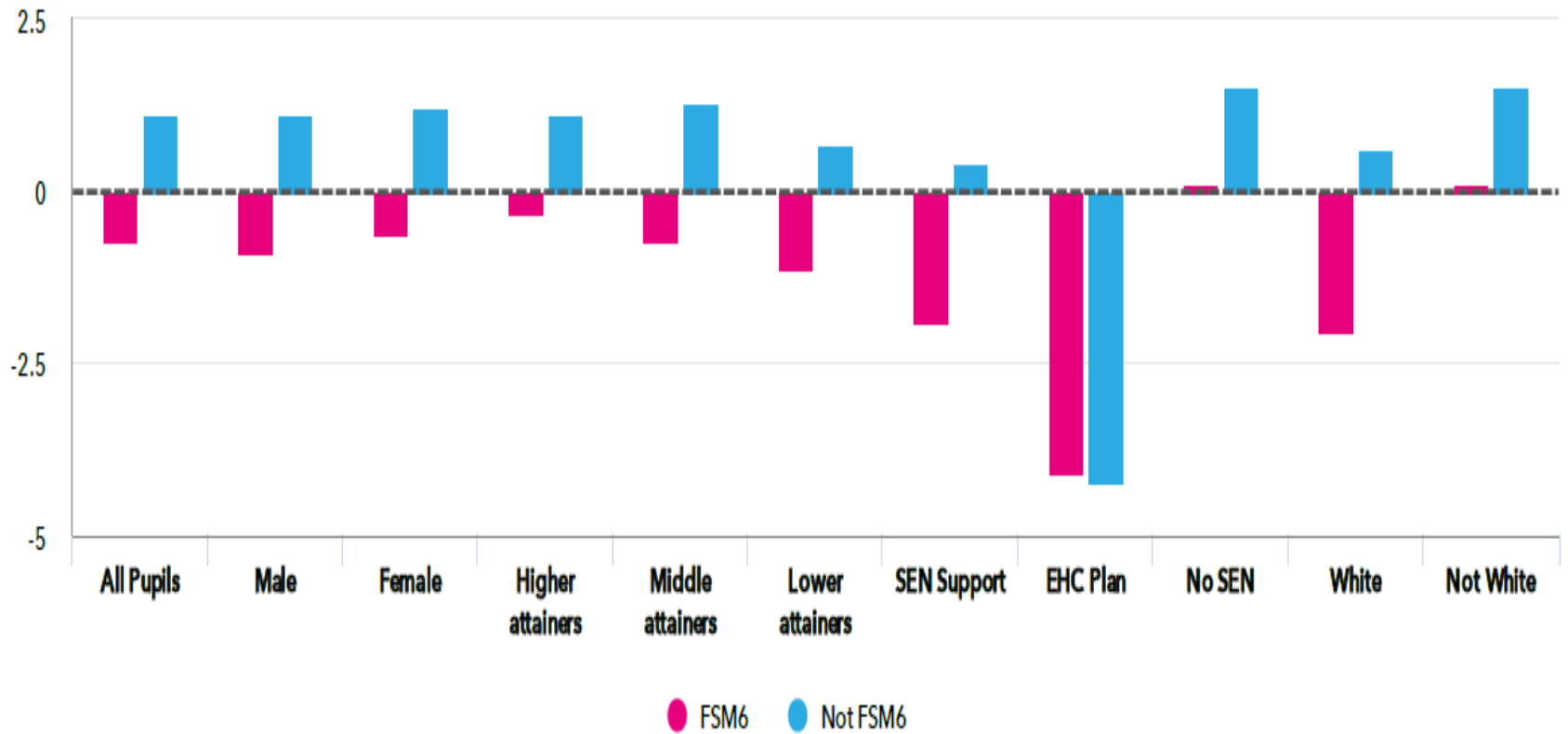


LA KS2 progress for disadvantaged pupils 2022

Average Scaled Score (Re, Ma)



LA Progress gap Average Scaled Score (Re, Ma)



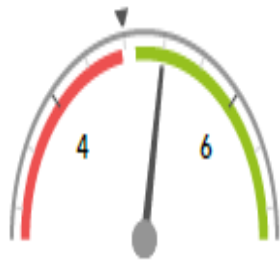
Overview

LA KS4 Attainment 2022 · Actual results

3416 pupils

Attainment 8 (Overall)

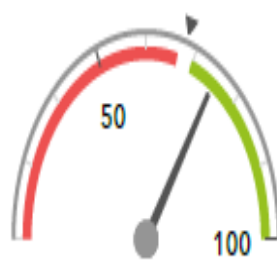
5.2+



Significantly above the national average (4.8) ◀

% English & Maths (Grade 4+)

75%+



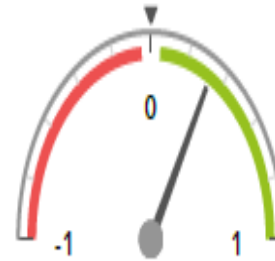
Significantly above the national average (68%) ◀

LA KS4 Progress 2022 · Value Added

3136 matched pupils

Progress 8 (Overall)

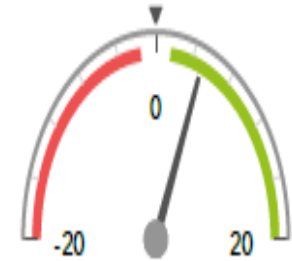
+0.33+



Significantly above the national average (0) ◀

% English & Maths (Grade 4+)

+5%+



Significantly above the national average (0%) ◀

LA KS4 higher and lower performing pupil groups 2022

	Higher performing	Lower performing
Overall achievement pupil progress	Bangladeshi (70) ⁺ Indian (391) ⁺ First language not English (1299) ⁺ Pakistani (157) ⁺ Other Asian (271) ⁺	EHC Plan (138) ⁻ Joined in Y10 or Y11 (64) ⁻ SEN Support (282) ⁻ Black Caribbean (157) ⁻ FSM (618) ⁻



Attainment & progress

LA KS4 Attainment 2022

3416 pupils

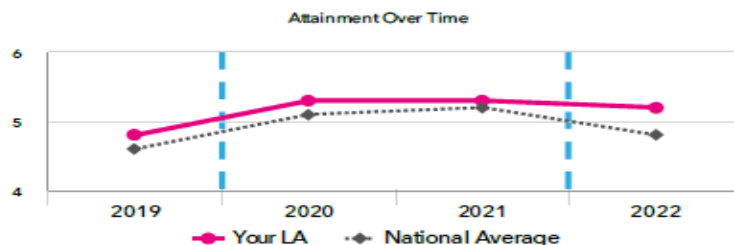
Attainment 8 (Overall)

5.2 +

FFT Rank



Significantly above the national average (4.8)



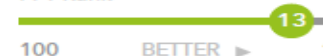
LA KS4 Progress 2022

3136 matched pupils

Progress 8 (Overall)

+0.33 +

FFT Rank



Significantly above the national average (0)

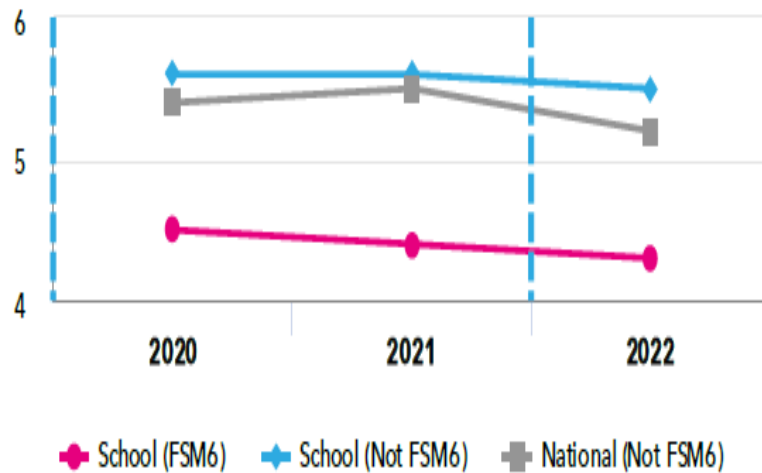
LA KS4 performance summary

	Actual results			Pupil progress		
	2020	2021	2022	2020	2021	2022
Number of Pupils / % Matched	1,443	1,658	3,416	87%	89%	92%
Attainment / Progress 8 (Overall)	5.3 + ↑	5.3 +	5.2 +	+0.34 + ↑	+0.10 + ↓	+0.33 +
Attainment / Progress 8 (English)	5.4 + ↑	5.3 -	5.4 +	+0.32 + ↑	-0.07 - ↓	+0.23 +
Attainment / Progress 8 (Maths)	5.1 + ↑	5.2 +	5.1 +	+0.30 +	+0.08 + ↓	+0.43 +
Attainment / Progress 8 (Ebacc)	5.1 + ↑	5.2 +	5.0 +	+0.29 + ↑	+0.11 + ↓	+0.36 +
Attainment / Progress 8 (Open)	5.5 + ↑	5.5 +	5.2 +	+0.43 + ↑	+0.21 + ↓	+0.29 +
% English & Maths (Grade 4+)	76% + ↑	74%	75% +	+6% +	-1% ↓	+5% +
% English & Maths (Grade 5+)	55% + ↑	54%	56% +	+8% +	-0% ↓	+5% +
% Ebacc (Grade 4+)	35% + ↑	38% +	30% +	+9% + ↑	+9% +	+4% +
% Ebacc (Grade 5+)	23% + ↑	26% +	22% +	+5% +	+5% +	+3% +
% 5+ GCSEs (Grade 7+)	24% + ↑	25%	23% +	+6% + ↑	+2% ↓	+5% +
Average entries per pupil	8.8 + ↑	8.7 +	8.1 +	+0.6 + ↑	+0.4 + ↓	+0.1 +
Average entries per pupil (GCSE only)	8.1 + ↑	7.9 + ↓	7.6 +	+0.6 + ↑	+0.3 + ↓	+0.2 +
% Pupils taking 3 single sciences	23% -	22% -	21% -	-1%	-5% - ↓	-4% -

Disadvantaged pupils

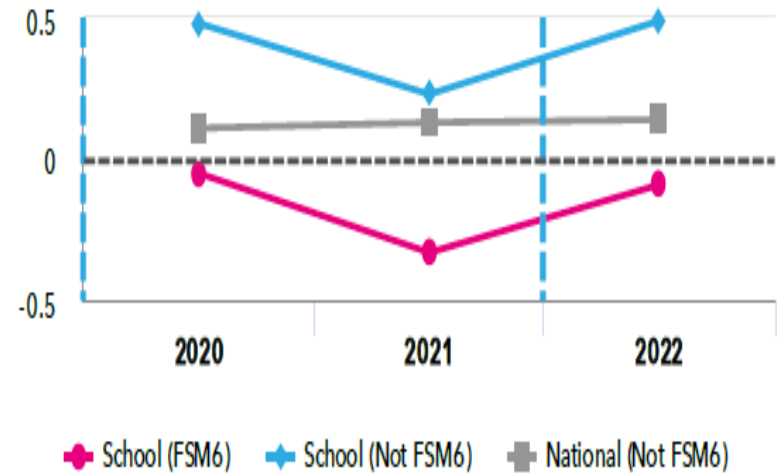
LA KS4 attainment for disadvantaged pupils 2022

Attainment 8 (Overall)

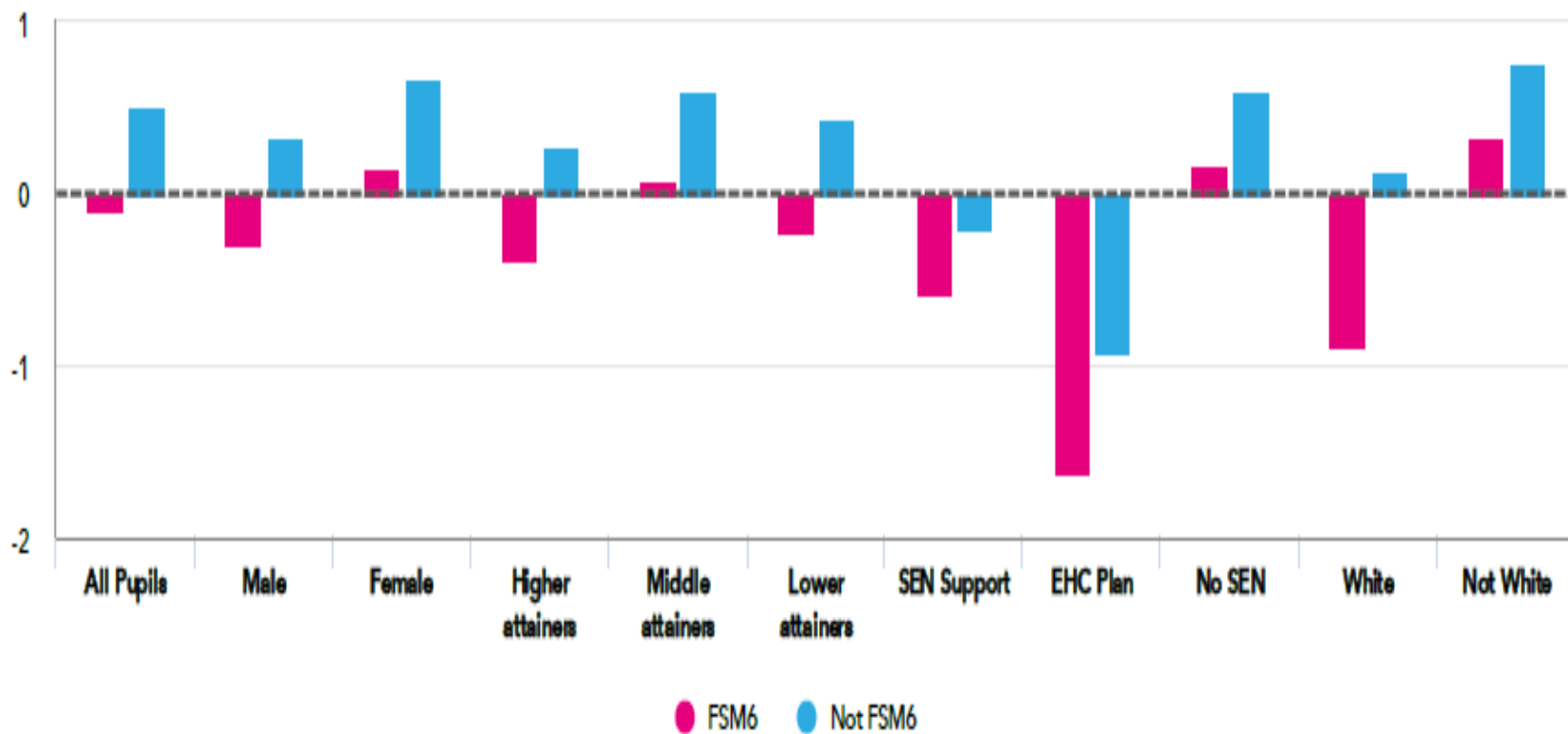


LA KS4 progress for disadvantaged pupils 2022

Progress 8 (Overall)



LA Progress gap Progress 8 (Overall)



		Hillingdon					London			England						
		2019	2020^	2021^	2022	Trend	Latest Avg.	LA vs London		2019	2020^	2021^	2022	LA vs England		
								Rank	Latest Diff.					Rank	Latest Diff.	Trend
								-5% 0% +5%						-5% 0% +5%		
KS5	A level APS per Entry	29.8	37.4	39.5	36.5		38.3	23rd	-4.6%	32.9	38.4	40.4	37.8	91st	-4.4%	
	Academic APS per Entry	29.9	37.5	39.6	36.5		38.3	23rd	-4.6%	33.0	38.4	40.4	37.8	90th	-3.5%	
	Tech level APS per Entry	30.9	30.8	34.1	28.0		30.0	22nd	-6.6%	28.6	29.8	31.7	30.6	123rd	-6.5%	
	Applied General APS per Entry	27.5	28.8	31.0	29.1		30.6	23rd	-4.8%	28.9	31.2	32.8	31.8	133rd	-6.5%	
	AAB at A level, at least 2 are facilitating	10%	19%	24%	16%		22%	22nd	-6%	14%	21%	25%	21%	106th	-5%	
	Three A*-A grades or better at A level	7%	17%	23%	15%		21%	23rd	-6%	11%	20%	25%	20%	104th	-5%	
Post-16 By age 19	Qualified to Level 2 by 19 - All Pupils	86.7%	84.2%	85.5%	-		85.8%	19th	-0.3%	81.8%	81.3%	81.6%	-	30th	+3.9%	
	FSM Eligible	71.5%	70.1%	71.1%	-		75.5%	25th	-4.4%	62.7%	62.2%	62.5%	-	29th	+6.6%	
	Not FSM Eligible	89.4%	86.3%	87.6%	-		87.9%	22nd	-0.3%	84.8%	84.2%	84.4%	-	33rd	+3.2%	
	Level 2 including Eng & maths by 19 - All Pupils	70.7%	70.4%	73.4%	-		74.4%	22nd	-1.0%	68.8%	68.3%	70.4%	-	45th	+3.0%	
	FSM Eligible	50.8%	51.3%	53.5%	-		60.2%	25th	-6.7%	44.3%	44.0%	46.8%	-	31st	+6.7%	
	Not FSM Eligible	74.3%	73.3%	76.2%	-		77.3%	21st	-1.1%	72.6%	72.0%	73.9%	-	44th	+2.3%	
	Qualified to Level 3 by 19 - All Pupils	61.7%	62.2%	66.8%	-		69.8%	24th	-3.0%	57.1%	57.4%	59.8%	-	33rd	+2.0%	
	FSM Eligible	38.8%	43.9%	46.8%	-		56.5%	26th	-9.7%	35.2%	35.9%	38.2%	-	29th	+6.6%	
	Not FSM Eligible	65.8%	64.9%	69.6%	-		72.5%	25th	-2.9%	60.5%	60.7%	63.0%	-	34th	+6.6%	