

Local Overview

Hillingdon

November 2022



INTELLIGENT
LONDON

Purpose of this dashboard

This dashboard draws together a range of performance indicators into a concise, graphical report. It compares your Local Authority performance against all other London LAs and England, and shows trends over time. It can be used to:

- identify relative strengths and weaknesses in performance
- plan and commission services
- inform self-evaluation and set targets
- demonstrate impact and effectiveness

Contents

How to interpret the analysis	3
Local landscape	4
Pupil characteristics and behaviour	5
Secondary and post-16 attainment	6
Pupil destinations	7
Participation and travel	8
Notes	9

Latest updates

Updated: Absence - 2021/22 Autumn and Spring terms

Updated: KS4 attainment - 2021/22 (provisional)

Updated: KS5 attainment - 2021/22 (provisional)

Updated: KS4 and KS5 destinations - 2020/21 (provisional)

Updated: Apprenticeship starts and achievements - 2021/22

Updated: Cross border movement - 2022

How to interpret the analysis

Each indicator on the dashboard has:

- a trend line to show the LA's change over time for up to four years (subject to availability of the data)
- a rank of the LA indicator against the 32 other London LAs and the ~151 LAs in England (although in some instances some LA data is suppressed and therefore excluded from the rankings)
- two bar charts showing the difference to the London average and the England average. Note that if the indicator is a percentage the difference is in percentage points; for example, 20% vs 23% is a 3% point difference. If the indicator is a number, the difference is a percentage, for example, 100 vs 110 is a 10% difference.
- a 4 year trend showing how the LA performs vs England based on the same basis as the two bar charts. The latest year of data is on the right. There are two types of indicator, performance indicators and volume & incidence indicators, as shown below:

Performance indicators

Performance indicators are those that allow the measurement of "better" or "worse" performance. Note that for some performance indicators better performance means a higher percentage (e.g. achievement of attainment thresholds), while in other cases lower means better (e.g. absence rates).

The best performing London LA has a rank of 1st, while the worst is ranked 32nd. The worst ranked LA in England ranks ~151st. Ranks in the top/bottom quartile in London and in England are highlighted.

A 4 year trend of how you compare to England

Measure	Hillingdon					London			England						
	2019	2020	2021	2022	Trend	Latest Avg.	LA vs London		2019	2020	2021	2022	LA vs England		
							Rank	Latest Diff.					Rank	Latest Diff.	Trend
	45.9%	44.7%	49.4%	44.2%		41.4%	6th	+2.8%	48.0%	43.7%	43.2%	45.9%	131st	-1.7%	

Trend lines show the best year's performance with a green dot, and the worst with a red dot

Latest year is on the right of the line

The bar is green where the LA performs better than the London or England average, and red when worse. If the gap is greater than 5% an arrow is shown on the end of the bar

Latest year is on the right

Volume & incidence indicators

Volume & incidence indicators have no "better" or "worse" performance, just more or less of something.

The bar is purple where your LA has a larger volume or incidence than the average, and orange when lower

Measure	Hillingdon					London			England						
	2019	2020	2021	2022	Trend	Latest Avg.	LA vs London		2019	2020	2021	2022	LA vs England		
							Rank	Latest Diff.					Rank	Latest Diff.	Trend
	47.3%	45.4%	43.9%	-		40.6%	1st	+3.3%	48.2%	42.8%	40.9%	-	11th	+3.0%	

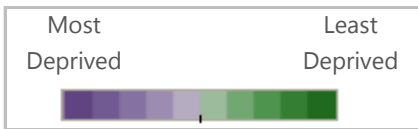
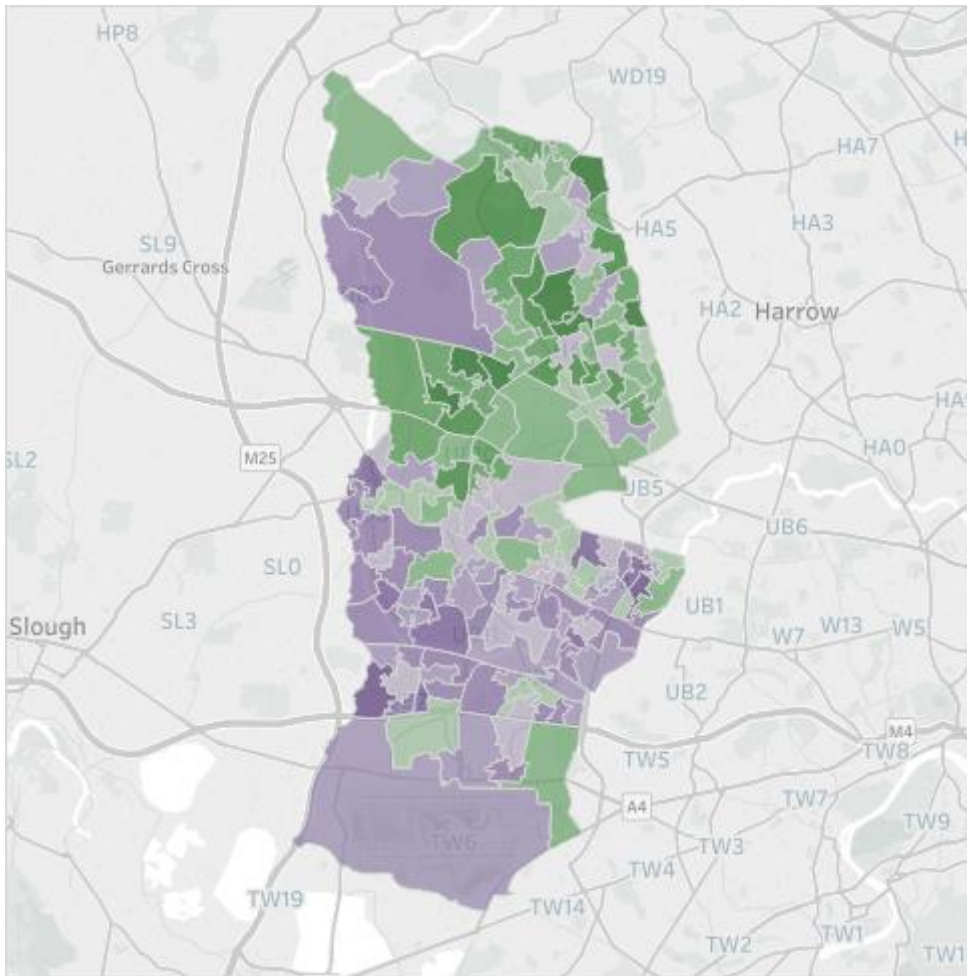
Latest year of published data highlighted in grey

LA trend lines show the year with the largest volume or incidence in purple, and the smallest in orange

Ranks in the top/bottom quartile in London and in England are highlighted.

Small number suppression
In instances where there are fewer than 6 pupils in the indicator, the latest LA value, ranks and differences will be shown in grey text, with no coloured background on the rank.

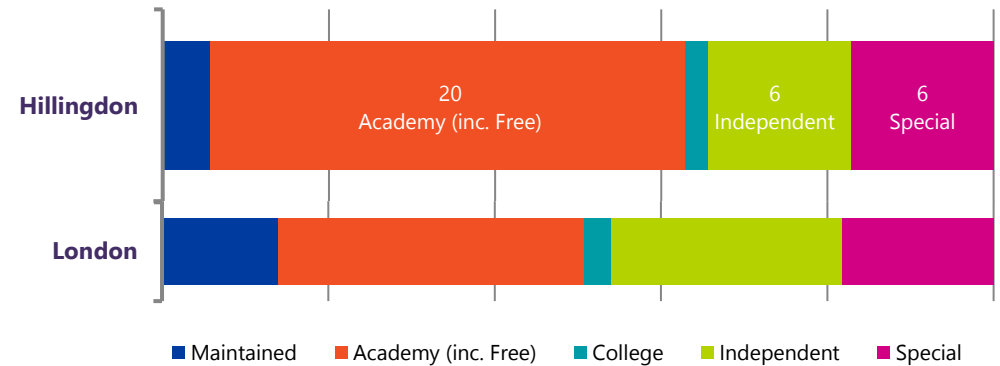
Income Deprivation Affecting Children (IDACI) Map



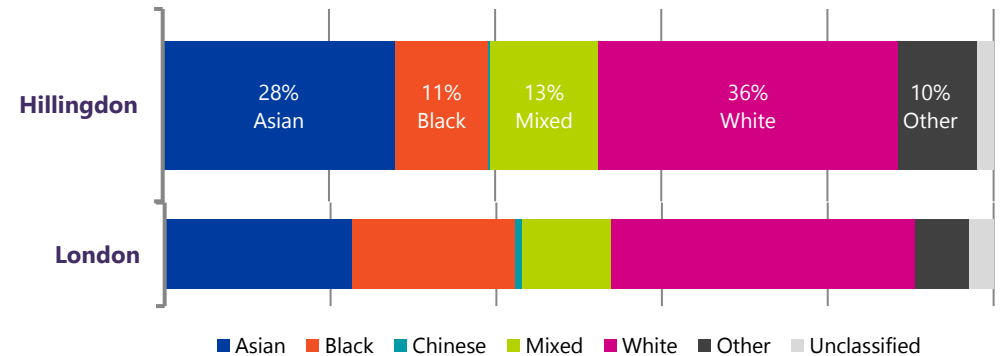
Deprivation ranks are based on the 2019 Income Deprivation Affecting Children Index (IDACI). This ranks each LSOA (an area of about 1000 households) in order of the 32,844 LSOAs nationally. LSOAs are grouped into 10 coloured bands, where the darkest purple is an LSOA in the 10% most deprived nationally, and darkest green is in the 10% least deprived nationally.

Breakdown Analysis

Composition of Secondary and Post-16 Provision



Ethnicity



		Hillingdon					London			England							
		2019	2020	2021	2022	Trend	Latest Avg.	LA vs London		2019	2020	2021	2022	LA vs England			
								Rank	Latest Diff.					Rank	Latest Diff.	Trend	
									-5% 0% +5%						-5% 0% +5%		
LA roll	Secondary state-funded pupil roll	20,541	21,186	21,712	22,138												
	Special school state-funded pupil roll	837	886	893	971												
Demographics Secondary	Free School Meals eligible % (FSM)	12.9%	14.5%	17.4%	19.4%		24.6%	10th	-5.2%	14.1%	15.9%	18.9%	20.9%	64th	-1.5%		
	English as additional language % (EAL)	44.2%	44.9%	44.7%	44.5%		39.5%	11th	+5.0%	16.9%	17.1%	17.2%	17.5%	14th	+2.0%		
	SEN Support %	9.8%	9.1%	8.7%	8.8%		10.8%	26th	-2.0%	10.8%	11.1%	11.5%	11.9%	136th	-3.1%		
	Education, health and care plan % (EHCP)	1.7%	1.8%	2.0%	2.0%		2.5%	28th	-0.5%	1.7%	1.8%	2.0%	2.2%	99th	-0.2%		
Abs. & Excl. Secondary	Absence - Overall	5.4%	5.5%	5.1%	7.5%		7.0%	27th	+0.5%	5.5%	5.6%	5.5%	8.6%	33rd	-1.1%		
	Absence - Authorised	3.9%	4.1%	3.7%	5.7%		4.9%	27th	0.8%	3.7%	4.0%	3.8%	6.3%	49th	-0.6%		
	Absence - Unauthorised	1.6%	1.5%	1.4%	1.8%		2.1%	11th	-0.3%	1.8%	1.6%	1.6%	2.4%	39th	-0.6%		
	Absence - Persistent Absentees	13.3%	15.2%	12.7%	22.7%		20.8%	26th	+1.9%	13.7%	15.0%	14.8%	26.7%	34th	-4.0%		
	Exclusions - Suspensions/Fixed Term (Secondary %)	6.5%	6.0%	6.2%	-		5.6%	23rd	+0.6%	10.7%	7.4%	8.5%	-	46th	-2.3%		
	Exclusions - Permanent (Secondary %)	0.17%	0.12%	0.15%	-		0.07%	31st	+0.08%	0.20%	0.13%	0.10%	-	108th	+0.05%		

^Absence and Exclusions data for 2020 and 2021 was impacted by COVID-19 related school closures. Both years are therefore not directly comparable with other years.

London rank is generally out of 32. England rank is generally out of ~151 (varies if some LA data is suppressed). '-' means data is unavailable. '*' means no data or that data is suppressed for data protection reasons.

		Hillingdon					London			England							
		2019	2020^	2021^	2022	Trend	Latest Avg.	LA vs London		2019	2020^	2021^	2022	LA vs England			
								Rank	Latest Diff.					Rank	Latest Diff.	Trend	
							<div style="display: flex; justify-content: space-between; width: 100px;"> -5% 0% +5% </div>			<div style="display: flex; justify-content: space-between; width: 100px;"> -5% 0% +5% </div>							
KS4	Headline	Attainment 8	47.7	52.1	52.8	51.7		52.6	21st	-1.7%	46.8	50.2	50.9	48.8	36th	+6.0%	
		Progress 8	+0.11	-	-	+0.33		+0.23	16th	+0.10	-0.03	-	-	-0.03	18th	+0.36	
		9-4 English & maths	68%	75%	74%	75%		74%	17th	-1%	65%	71%	72%	69%	31st	-6%	
		9-5 English & maths	47%	55%	54%	56%		57%	19th	-1%	43%	50%	52%	50%	31st	-6%	
EBacc	English Baccalaureate APS	4.2	4.6	4.6	4.6		4.8	21st	-3.5%	4.1	4.4	4.5	4.3	37th	+7.6%		
	English Baccalaureate Entries	45%	44%	44%	42%		55%	31st	-13%	40%	40%	39%	39%	47th	-3%		
	English Baccalaureate (9-4)	27%	34%	34%	30%		37%	24th	-7%	25%	30%	30%	27%	44th	-3%		
	English Baccalaureate (9-5)	20%	24%	25%	22%		28%	24th	-6%	17%	21%	22%	20%	47th	-2%		
KS5	A level APS per Entry	29.8	37.4	39.5	36.5		38.3	23rd	-4.6%	32.9	38.4	40.4	37.8	91st	-3.4%		
	Academic APS per Entry	29.9	37.5	39.6	36.5		38.3	23rd	-4.6%	33.0	38.4	40.4	37.8	90th	-3.5%		
	Tech level APS per Entry	30.9	30.8	34.1	28.0		30.0	22nd	-6.6%	28.6	29.8	31.7	30.6	123rd	-8.5%		
	Applied General APS per Entry	27.5	28.8	31.0	29.1		30.6	23rd	-4.8%	28.9	31.2	32.8	31.8	133rd	-8.5%		
	AAB at A level, at least 2 are facilitating	10%	19%	24%	16%		22%	22nd	-6%	14%	21%	25%	21%	106th	-5%		
	Three A*-A grades or better at A level	7%	17%	23%	15%		21%	23rd	-6%	11%	20%	25%	20%	104th	-5%		
Post-16	By age 19	Qualified to Level 2 by 19 - All Pupils	86.7%	84.2%	85.5%	-		85.8%	19th	-0.3%	81.8%	81.3%	81.6%	-	30th	-3.9%	
		<i>FSM Eligible</i>	71.5%	70.1%	71.1%	-		75.5%	25th	-4.4%	62.7%	62.2%	62.5%	-	29th	-6.6%	
		<i>Not FSM Eligible</i>	89.4%	86.3%	87.6%	-		87.9%	22nd	-0.3%	84.8%	84.2%	84.4%	-	33rd	+3.2%	
		Level 2 including Eng & maths by 19 - All Pupils	70.7%	70.4%	73.4%	-		74.4%	22nd	-1.0%	68.8%	68.3%	70.4%	-	45th	+3.0%	
		<i>FSM Eligible</i>	50.8%	51.3%	53.5%	-		60.2%	25th	-6.7%	44.3%	44.0%	46.8%	-	31st	+6.7%	
		<i>Not FSM Eligible</i>	74.3%	73.3%	76.2%	-		77.3%	21st	-1.1%	72.6%	72.0%	73.9%	-	44th	+2.3%	
		Qualified to Level 3 by 19 - All Pupils	61.7%	62.2%	66.8%	-		69.8%	24th	-3.0%	57.1%	57.4%	59.8%	-	33rd	+7.0%	
		<i>FSM Eligible</i>	38.8%	43.9%	46.8%	-		56.5%	26th	-9.7%	35.2%	35.9%	38.2%	-	29th	+8.6%	
<i>Not FSM Eligible</i>	65.8%	64.9%	69.6%	-		72.5%	25th	-2.9%	60.5%	60.7%	63.0%	-	34th	+6.6%			

^Due to the cancellation of exams in response to COVID-19 and the change to using teacher assessments, 2020 and 2021 exam results and qualification levels by age 19 are not directly comparable with other years. London rank is generally out of 32. England rank is generally out of ~151 (varies if some LA data is suppressed). '-' means data is unavailable. '*' means no data or that data is suppressed for data protection reasons.

		Hillingdon					London			England							
		2018	2019	2020	2021	Trend	Latest Avg.	LA vs London		2018	2019	2020	2021	LA vs England			
								Rank	Latest Diff.					Rank	Latest Diff.	Trend	
Destinations	KS4 (all state-funded)	Overall Education or Employment /Training Destination	93.7%	93.9%	94.9%	94.5%		94.4%	14th	+0.1%	94.1%	94.1%	93.9%	93.7%	45th	+0.8%	
		Further education college or other FE provider	25.2%	28.2%	29.2%	26.7%		24.1%	10th	+2.6%	34.5%	34.8%	36.0%	35.9%	115th	-9.2%	
		School Sixth Form - state funded	58.2%	56.6%	56.0%	60.3%		58.0%	16th	+2.3%	37.1%	36.8%	36.5%	38.3%	20th	+22.0%	
		Sixth Form College	2.7%	2.2%	2.5%	2.4%		9.3%	27th	-6.9%	13.0%	13.2%	12.7%	13.0%	116th	-10.6%	
		Apprenticeships	3.1%	2.7%	2.7%	1.2%		0.7%	5th	+0.5%	4.3%	4.1%	3.6%	2.4%	115th	-1.2%	
		Destination not sustained	4.8%	4.6%	3.6%	3.5%		3.5%	20th	-	5.0%	5.0%	5.1%	4.9%	31st	-1.4%	
		Activity not Captured in Data	1.5%	1.5%	1.6%	2.0%		2.1%	18th	-0.1%	0.9%	0.9%	1.0%	1.4%	128th	+0.6%	
	KS5 (mainstream, Level 3)	Overall Education or Employment /Training Destination	87.3%	87.0%	87.6%	85.1%		84.3%	14th	+0.8%	87.8%	88.2%	87.6%	85.5%	87th	-0.4%	
		Further education college or other FE provider	3.6%	7.7%	12.9%	8.5%		5.9%	7th	+2.6%	6.0%	4.8%	6.0%	7.2%	42nd	+1.3%	
		Apprenticeships	5.5%	5.0%	4.5%	2.8%		2.0%	4th	+0.8%	7.1%	6.8%	6.1%	4.1%	111th	-1.3%	
		UK Higher Education Institution	56.8%	53.4%	50.9%	58.9%		63.7%	26th	-4.8%	48.9%	51.0%	49.9%	52.3%	43rd	+6.6%	
		Top Third of HEIs^	17%	13.7%	11.7%	11.6%		21.8%	30th	-10.2%	19%	16.7%	17.5%	17.1%	111th	-5.5%	
		Russell Group (incl. Ox. and Cam.)^	9%	11.0%	9.8%	9.8%		19.7%	30th	-9.9%	14%	14.7%	15.7%	15.3%	118th	-5.5%	
		Sustained Employment and/or Training Destination	18.7%	17.5%	17.0%	12.4%		10.1%	8th	+2.3%	23.4%	23.3%	23.3%	19.6%	122nd	-7.2%	
Destination not sustained	7.4%	8.5%	8.6%	10.5%		10.6%	19th	-0.1%	8.6%	8.1%	8.6%	10.5%	76th	-			
Activity not Captured in Data	5.4%	4.5%	3.8%	4.5%		5.1%	9th	-0.6%	3.6%	3.7%	3.7%	4.0%	104th	+0.5%			

^HE breakdown data for top third of HEIs and Russell Group are for the cohort finishing KS5 two years prior to allow for the destination to have been achieved in either of the two years following completion of KS5. London rank is generally out of 32. England rank is generally out of ~151 (varies if some LA data is suppressed). '-' means data is unavailable. '*' means no data or that data is suppressed for data protection reasons.

		Hillingdon					London			England							
		2019	2020	2021	2022	Trend	Latest Avg.	LA vs London		2019	2020	2021	2022	LA vs England			
								Rank	Latest Diff.					Rank	Latest Diff.	Trend	
Participation	Apprenticeship starts (Under 19s)	344	274	204	262												
	Apprenticeship achievements (Under 19s)^	244	132	128	129												
	16 and 17 year olds who are NEET or not known activity	6.9%	3.9%	2.8%	-		4.0%	9th	-1.2%	5.5%	5.5%	5.5%	-	13th	-2.7%		
	<i>NEET</i>	2.5%	2.3%	2.0%	-		1.8%	24th	+0.2%	2.6%	2.7%	2.8%	-	41st	-0.8%		
	<i>Not known activity</i>	4.4%	1.5%	0.9%	-		2.2%	8th	-1.3%	2.9%	2.8%	2.7%	-	33rd	-1.8%		
	16 year olds in education and training	97%	97%	99%	-		98%	3rd	-1%	95%	95%	96%	-	3rd	-3%		
	<i>Female</i>	97%	99%	99%	-		98%	3rd	-1%	96%	96%	97%	-	4th	-2%		
	<i>Male</i>	96%	96%	99%	-		97%	3rd	-2%	95%	94%	95%	-	3rd	-4%		
	17 year olds in education and training	93%	95%	95%	-		95%	15th	-	90%	90%	91%	-	18th	-4%		
	<i>Female</i>	95%	96%	97%	-		96%	12th	-1%	91%	91%	92%	-	14th	-5%		
<i>Male</i>	91%	94%	93%	-		93%	15th	-	88%	88%	89%	-	21st	-4%			
Travel	Secondary pupils from LA attending school in other LAs	18.2%	17.8%	17.6%	17.1%		20.6%	24th	-3.5%	9.5%	9.3%	9.2%	9.1%	26th	+8.0%		
	Secondary pupils from other LAs attending school in LA	18.1%	17.1%	16.2%	15.4%		19.7%	23rd	-4.3%	9.5%	9.3%	9.2%	9.1%	34th	+6.3%		

^Apprenticeship achievement data for 2020 and 2021 was affected by COVID-19 which has resulted in a large number of unknown outcomes.

London rank is generally out of 32. England rank is generally out of ~151 (varies if some LA data is suppressed). '-' means data is unavailable. '*' means no data or that data is suppressed for data protection reasons.

Data sources

Below is the list of data sources. Full footnotes and methodologies can be found within the individual sources.

Pupil Characteristics and Behaviour

<https://www.gov.uk/government/collections/statistics-school-and-pupil-numbers>

<https://www.gov.uk/government/collections/statistics-special-educational-needs-sen>

<https://www.gov.uk/government/collections/statistics-pupil-absence>

<https://www.gov.uk/government/collections/statistics-exclusions>

Secondary Phase Attainment

<https://www.gov.uk/government/collections/statistics-gcses-key-stage-4>

<https://www.gov.uk/government/collections/statistics-attainment-at-19-years>

Destinations

<https://www.gov.uk/government/collections/statistics-destinations>

Participation and Travel

<https://www.gov.uk/government/collections/further-education-and-skills-statistical-first-release-sfr>

<https://www.gov.uk/government/publications/neet-and-participation-local-authority-figures>

<https://www.gov.uk/government/publications/participation-in-education-and-training-by-local-authority>

<https://www.gov.uk/government/collections/statistics-school-and-pupil-numbers>

Glossary

KS4 - Key Stage 4

KS5 - Key Stage 5

FSM - Free School Meals

LA - Local Authority

APS - Average Point Score

IDACI - Income Deprivation Affecting Children Index

LSOA - Lower Super Output Area. An area with population of approximately 1500 used in Census and other datasets.

NEET - Not in Education, Employment or Training.

Level 2 - Attainment of Level 2 equates to achievement of 5 or more GCSEs at grades A*-C or equivalent qualifications.

Level 3 - Level 3 equates to achievement of 2 or more A-levels or equivalent qualifications.

Including Ox. and Cam. - Including students at the University of Oxford and the University of Cambridge.

Mainstream - State-funded non special schools

Young People's Education and Skills provides pan-London leadership for 14 to 19 education and training provision in relation to the current and future needs of learners and employers, supports local authorities in undertaking their statutory functions, and assists other stakeholders in planning, policy and provision.



London Councils
59½ Southwark Street
London
SE1 0AL

www.londoncouncils.gov.uk

Mime are experts in communicating complex information with clarity within the education sector. We are passionate about using data to improve the life chances of young people.



Mime
The Print Rooms
164-180 Union St
London SE1 0LH

www.mimeconsulting.co.uk
info@mimeconsulting.co.uk
0208 099 4240