

Inclusion for all

Kathryn Angelini

Assistant Director for Education & Vulnerable Children

Georgia Watson-Polack

Access to Education Manager



"The system of excluding badly behaved pupils from school should be abolished because it punishes the most vulnerable children"



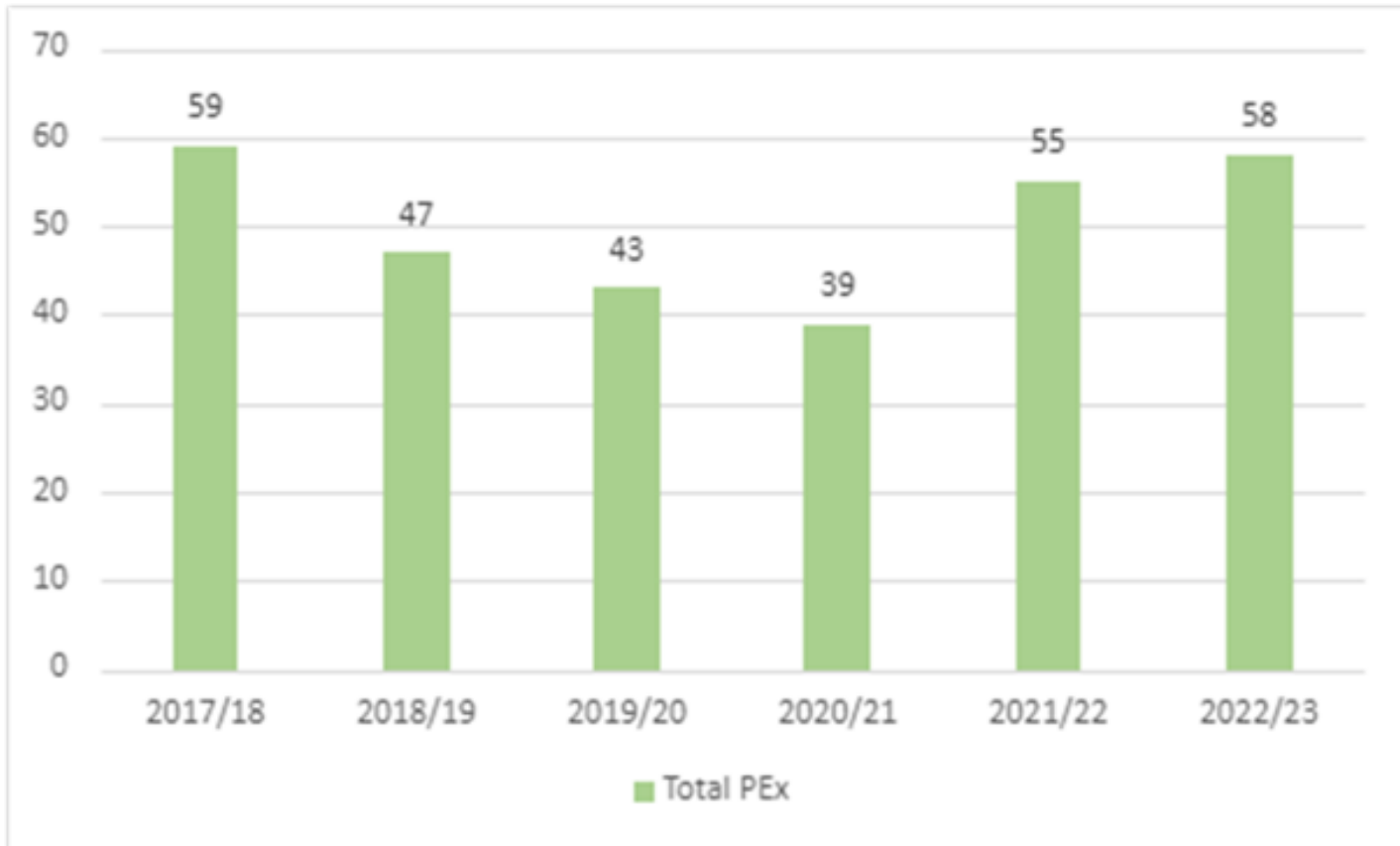
What are the arguments for abolishing permanent exclusions?



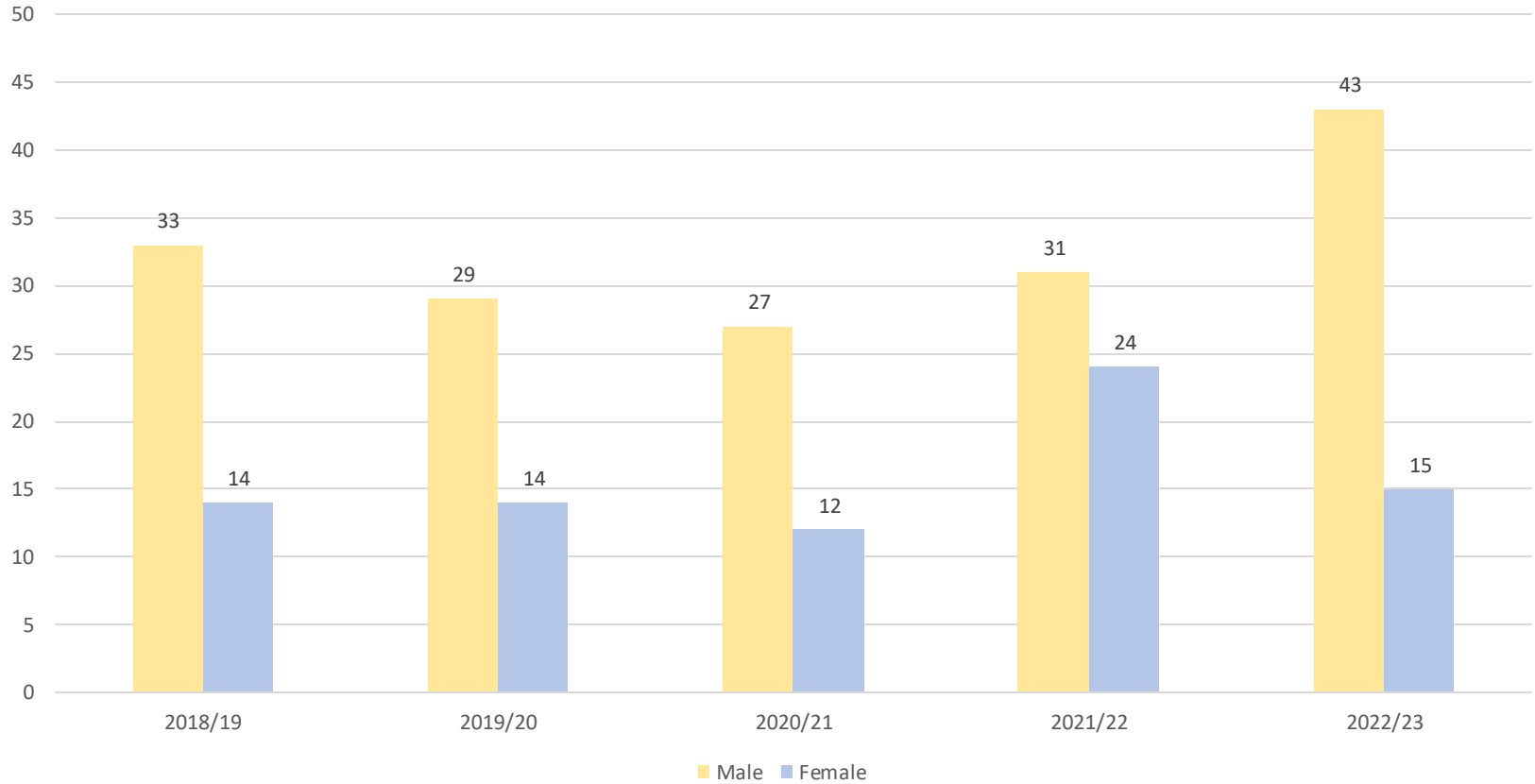
What are the arguments against abolishing permanent exclusions?



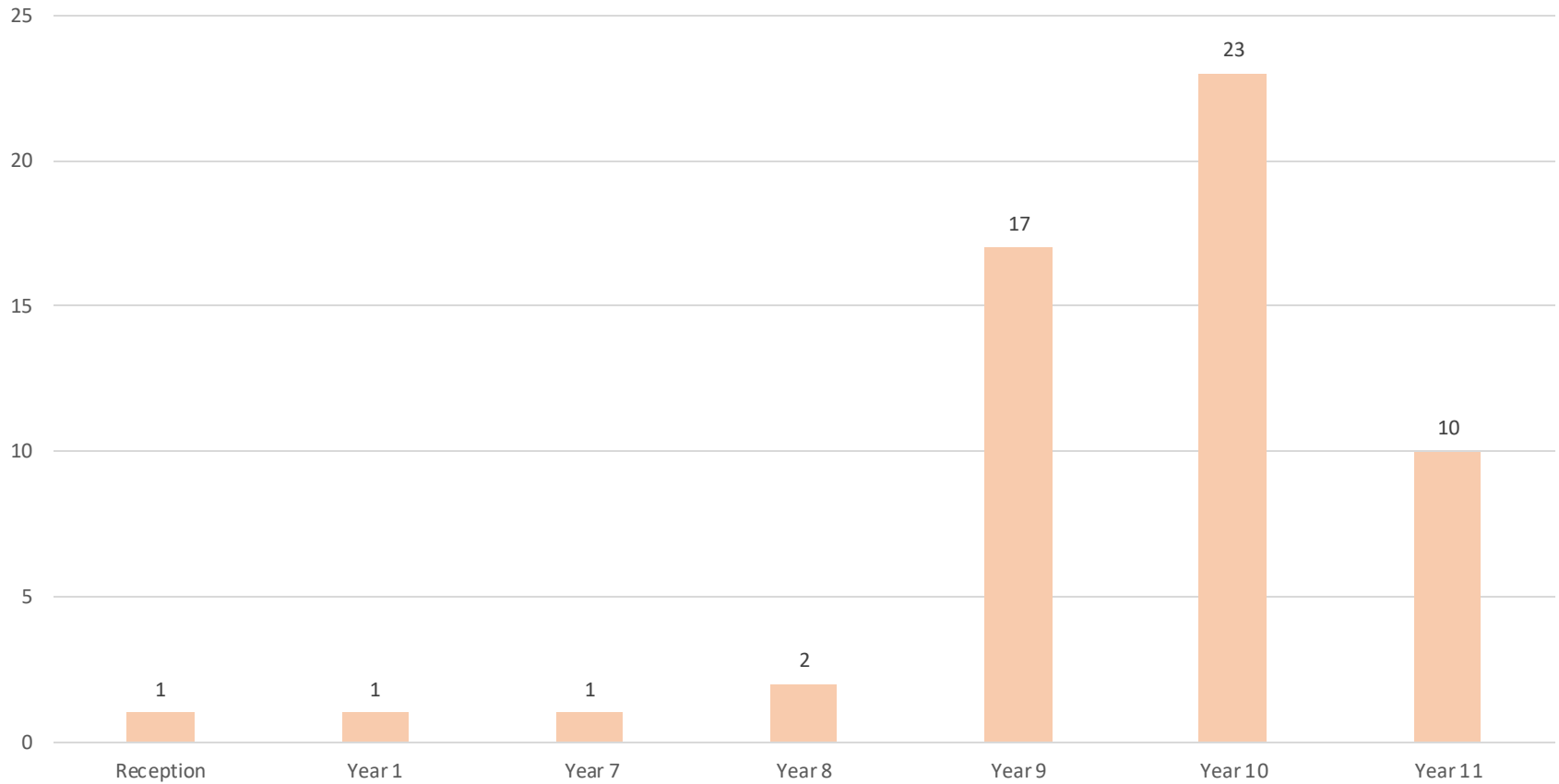
The picture in Hillingdon



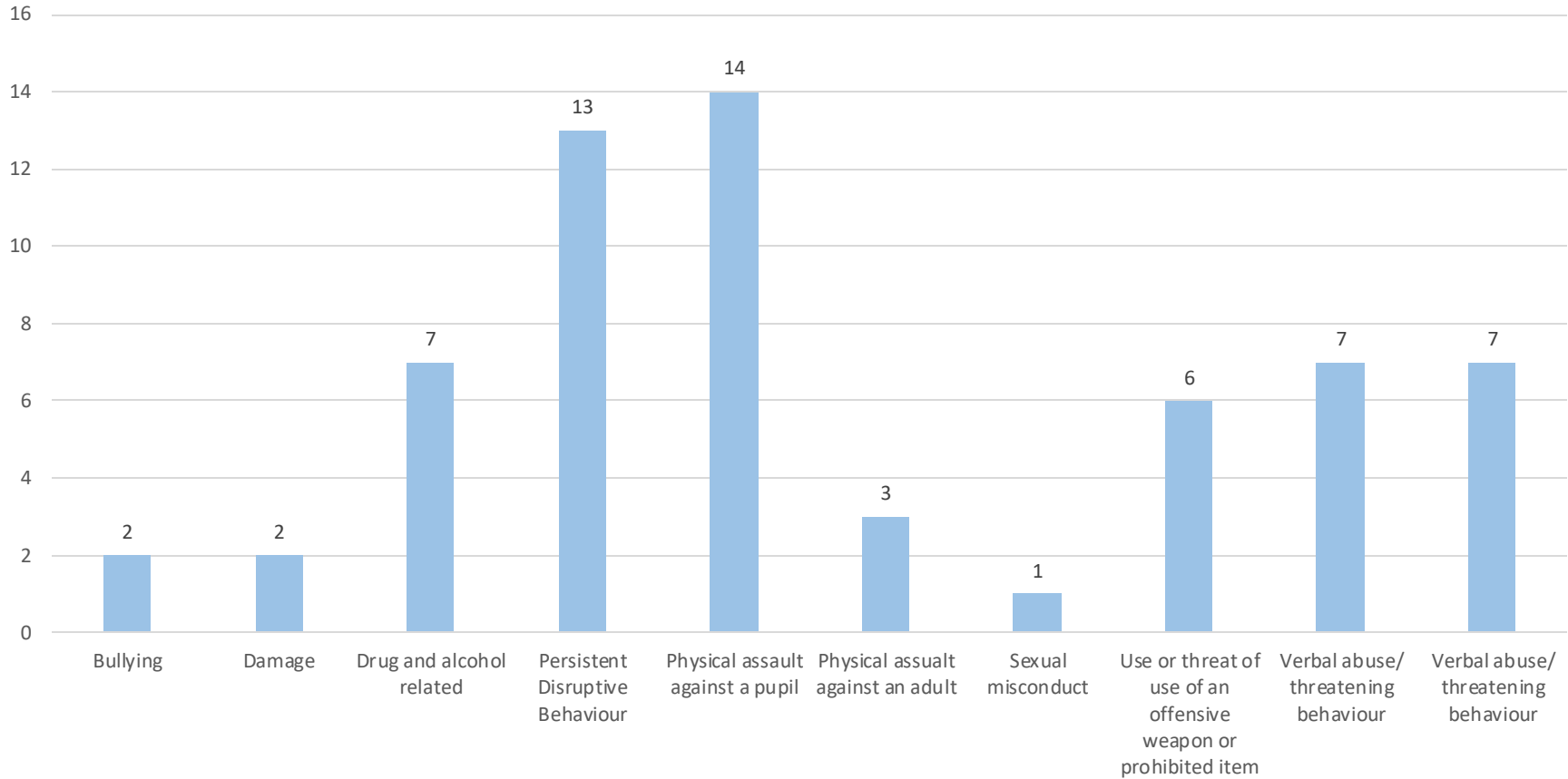
The picture in Hillingdon



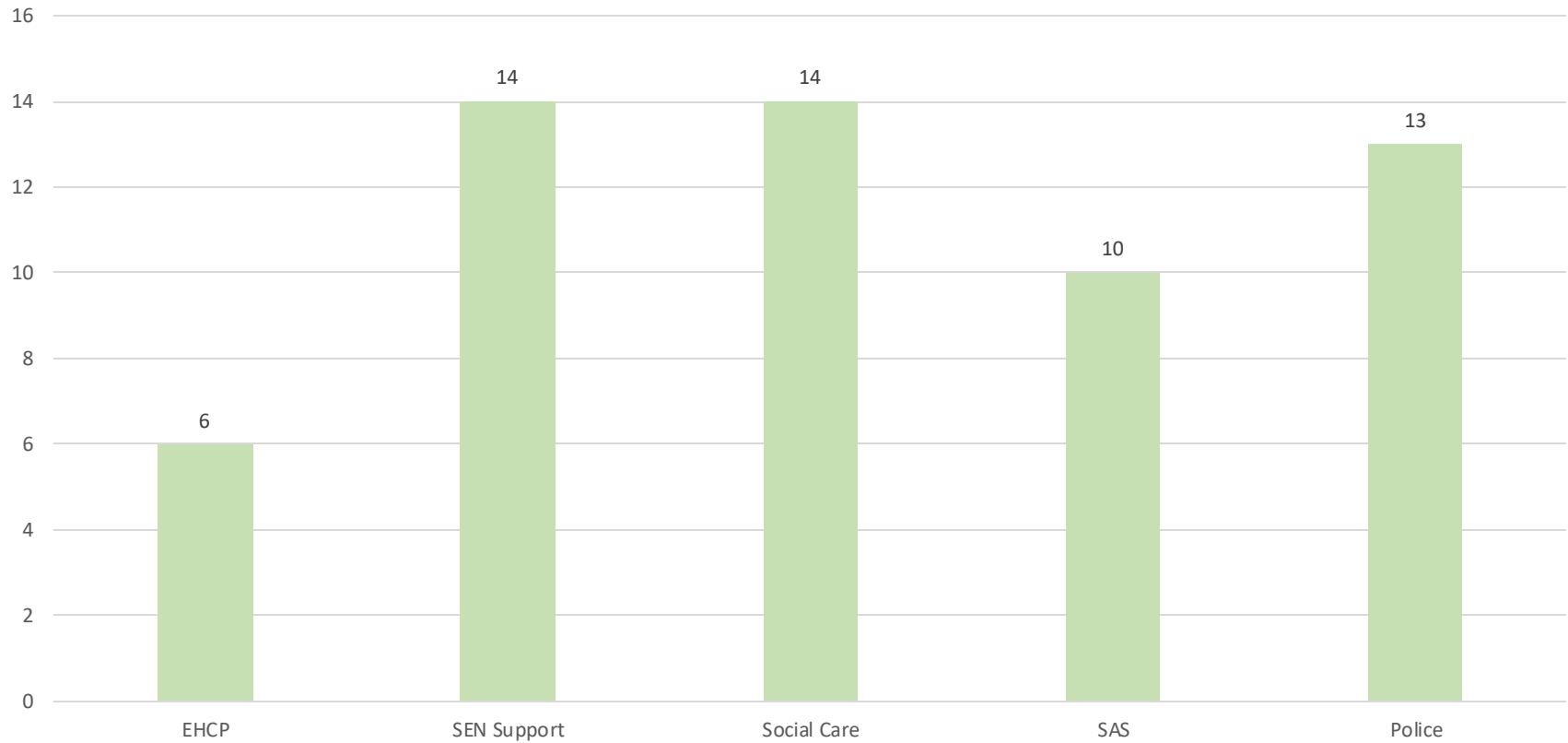
The picture in Hillingdon



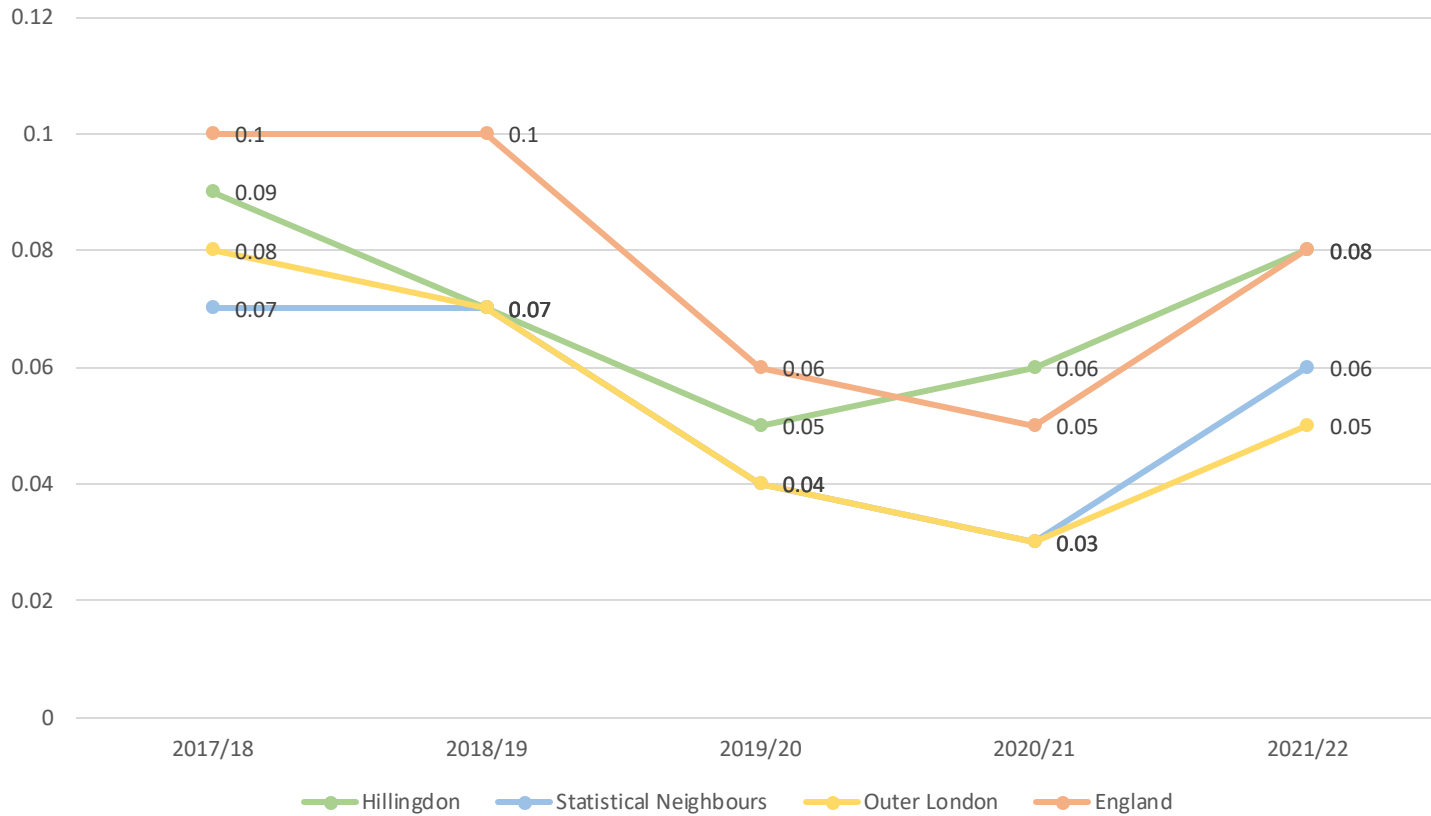
The picture in Hillingdon



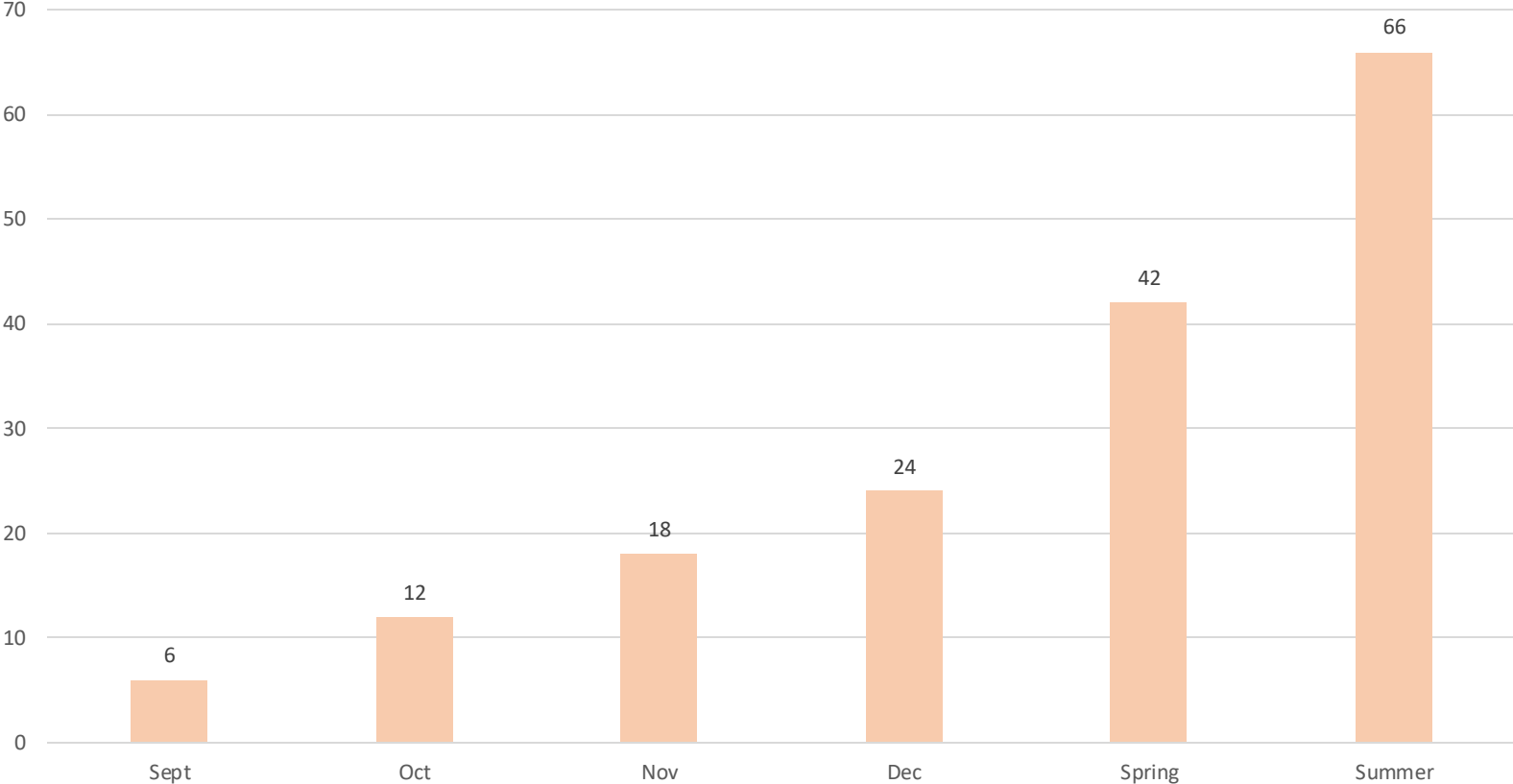
The picture in Hillingdon



How do we compare?



What's happening this year?

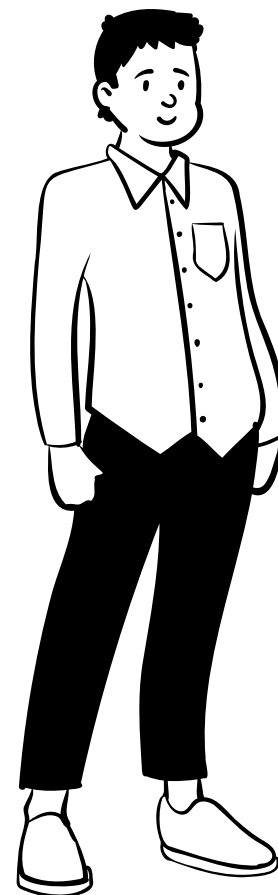


Why is it important to reduce the number of permanent exclusions?



Meet Connor

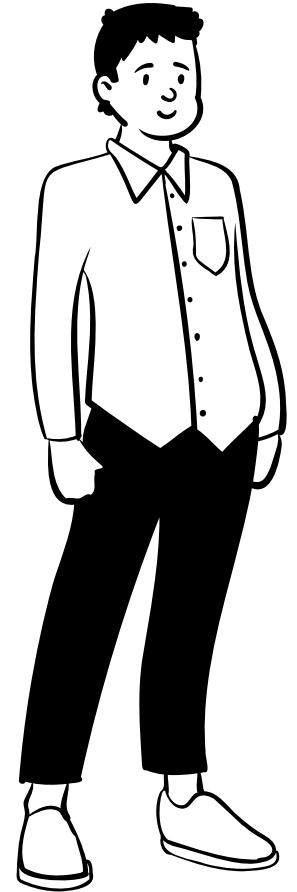
- Connor is a 16 year old student at a local secondary school studying for his GCSEs.
- Connor views himself as independent and ambitious. In the future he wants to be an accountant and property developer so he can help single parents provide stable homes to their children.
- One of the things Connor is most proud of is that he can lift more than his own bodyweight in the gym.



Connor's Story

Pre-school

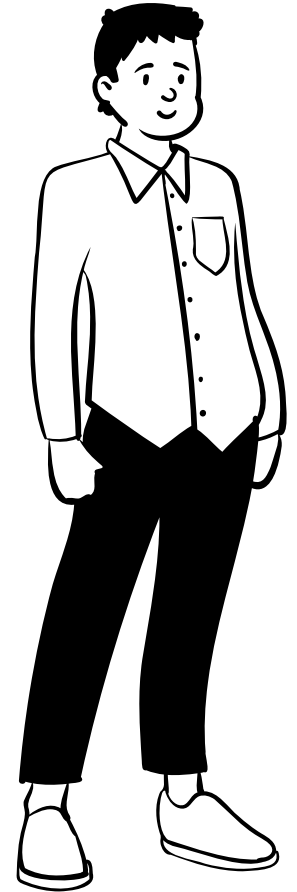
- Mother was 'thrown out' of the family home when pregnant
- Parents separated before Connor was born
- Connor was known to social services before he was born
- Mother attempted suicide when at risk of homelessness



Connor's Story

Primary school

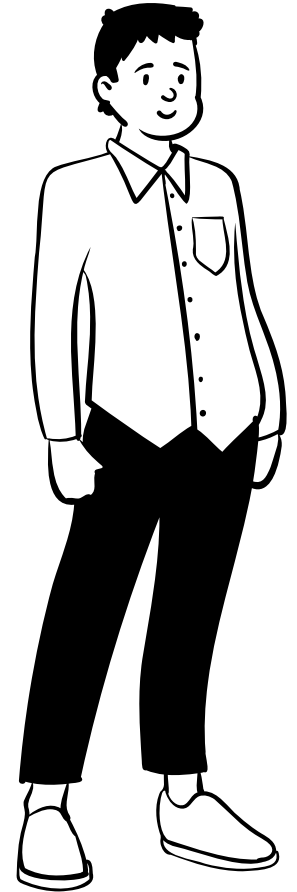
- School report observing sexualised behaviour
- Witnessed multiple occasions of domestic violence
- Is placed on a Child Protection Plan following the arrest of his father



Connor's Story

Secondary school

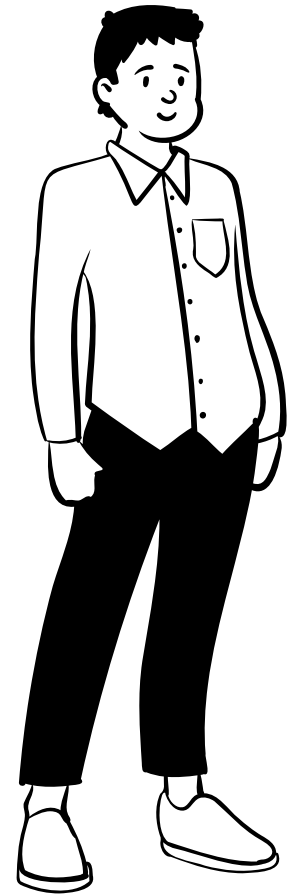
- Moved to a CiN plan due to de-escalating risk
- Multiple reports of bullying throughout
- Was stabbed in the school toilets. He did not take any further action for fear of being branded a 'snitch'.



Connor's Story

Year 11

- Police called to the family home after reports from Connor of domestic abuse.
- Moved temporarily to live with father.
- Accused by another student of trying to sell and distribute cannabis.



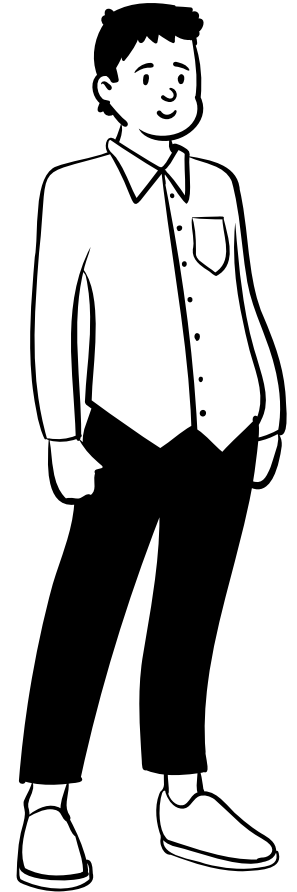
**Would you permanently exclude
Connor?**



Connor's Story

Post PEx

- Enrolled at TSH with support from Ultra.
- Moved to a Child Protection Plan.
- Father is arrested and imprisoned.
- Attempts suicide and is admitted to hospital during the summer term.
- Ends Year 11 with no GCSE qualifications at grade 4 or above.
- Sectioned twice more during the summer.
- Becomes a Looked After Child.



**Would knowing this change your
decision?**



How can we do things differently?



Looking to the future....

- Vulnerable learners clinics
- Alternative Provision Directory
- Task and finish group
- Inclusion Panel

exclusionsupport@hillington.gov.uk

