



SEND & INCLUSION NEWSLETTER

DECEMBER 2023, VOLUME 19

Subscribe now

Join our mailing list to
receive the latest newsletter

[Sign up now](#)



Wishing you a
joyous festive
period & a happy
new year!





CONTENTS

Section 1

SEND Advisory Service

Early Years

Schools

Parents and Carers - Key Workers

Sensory

Section 2

Educational Psychology Service

Section 3

SEND Statutory Service

Section 4

CITS

Notice Board

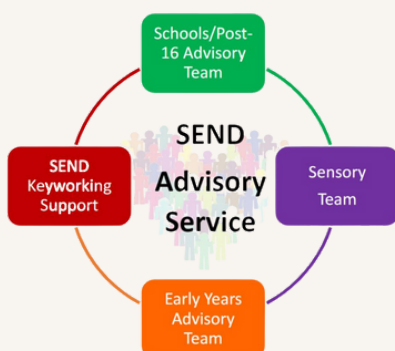
SEND ADVISORY SERVICE



Important request for feedback

The SEND Advisory Service works with many schools and settings, offering a wide range of provision to support Early Intervention. SAS is currently free at the point of entry. To enable us to continue to offer this unique service, we need to know what elements are beneficial and consider whether expanding this offer through a traded model would be beneficial. Please provide feedback below. We appreciate your support.

SEND Advisory Service Survey



ESF Panel Information

The ESF panel is held every Thursday 10am-1pm,

[Please click here to sign up for the ESF Panel](#)

Guidance

[Non-Statutory Funding Guidance](#)
(Updated Nov 2023)

[Early Years Inclusion Funding Guidance](#)

[My Support Plan Advice & Guidance](#)

[Referrals to SEND Advisory Service via Stronger Families Hub](#)

[Information for SEND professionals](#)

Key Documents

[Early Identification Toolkit](#)

[SAS Advice Line](#)

[SAS Training Brochure](#)

[The OAP Checklist](#)



SEND ADVISORY SERVICE



Send Notional Budget

Following the presentation at the recent SENCO forum, about the SEND Notional budget, we would like to provide some clarification. The allocation of SEND funding 'notional budget' is to meet the needs of all pupils with SEND, (Reception and above), including those with EHCP and those at SEND Support. Some children at SEND support may only need £1000 but others may need more. This fluctuation should be accounted for within the allocated amounts. It is expected that children with high needs should be allocated a significant proportion of this budget, up to the threshold of £6000. If provision is costing more than this, then schools have the option to apply for additional 'top up' funding from their Local Authority, either through EHCP or Early Support Funding.

Further information: The requirement to identify this budget for their schools is set out in regulation 11(3) of the School and Early Years Finance (England) Regulations 2022. That regulation says that "the local authority must identify within each budget share an amount calculated by reference to the requirements, factors and criteria specified in Part 3 [that is, the various elements of the local schools funding formula] which are relevant to pupils with special educational needs; such amount must be calculated using a threshold sum of £6,000 per pupil below which the school will be expected to meet the additional costs of pupils with special educational needs from its [annual] budget share".

In discharging that responsibility, amongst other expectations set out in the SEND Code of Practice, mainstream schools are expected to:

1. Meet the costs of special educational provision for pupils identified as on SEN Support in accordance with the SEND Code of Practice; and
2. Contribute towards the costs of special educational provision for pupils with high needs (most of whom have education, health and care (EHC) plans), up to the high needs cost threshold set by the regulations (currently £6,000 per pupil per annum).



ESF Banding Update

As discussed in the SENCO forums, ESF will be transferring, in phases, to the 'Banded Funding Model', in line with EHCP funding. From January 2024, all new applications for children from Reception upwards will be allocated the amount according to the banded funding model. Please note, it is imperative that the level of need is clear in the MSP to enable an informed decision, and banding will be allocated according to need and intervention required, not necessarily the hours being claimed for. More information on the banded model can be found here:

[Hillingdon Banded Funding Model](#)

EARLY YEARS



EY Forum Registration

[Please click here to register for the upcoming EY Forum](#)

Date: Wednesday 17th Jan 9:30am

EYIF Panel Dates

Deadline for submission

19th December 2023

12th December 2023

It has been a year since the Early Years Team have changed the way it works with settings. We would like to gather your feedback on how this is for you and potential improvements we can make to our service.

[Please click here for the feedback form](#)

[A useful website for Early-years practitioners](#)



[Please click here to visit Hillingdon CITS website for further information on training & advice sheets](#)

- Early years advice sheets
- School aged children advice sheets
- Nursery Talk
- School Talk
- Video Talk to Me
- Useful videos
- Hillingdon Moves advice sheets
- Useful advice sheets and websites
- Early years advice sheets
- School age advice sheets
- Developing gross motor skills (school age)

[Please click here for the Early Years Inclusion Funding Guidance](#)

[Please click here for the EY Strategy Resource Bank 2023-2024.](#)

[Please click here for the Children Centre's Autumn Flyer](#)



NEW Early Years Entitlement Funding

Please can you complete the survey applicable to you, this is to gather your thoughts on the new funding to come into place in 2024.

[Group childcare provider survey](#)

[Childminder survey](#)

SCHOOLS



SENCO Forum

Thank you for joining us on Wednesday 22nd November for our Early Years and School's SENCO Forums. Please see below the EYs and SENCO Forum Slides for your review.

EY Slides

SENCO Forum Slides

Please could you complete the following form as soon as possible for expressing your interest in having a SEND Review: [SEND Review Form](#)

Finally, please see below the link for registration at the next Schools Forum on the **17th of January 2024**. Registration will end the Friday prior, and the Teams link shared.

**School's SENCO Forum –
[SIGN UP HERE](#)**

Celebrating Good Practice

A learning walk at Guru Nanak Sikh Academy school showcased some fabulous displays, highlighting the importance of inclusivity!



Good Autism Practice Training

Those who attended the Good Autism Practice session delivered shared their views on how it went...

“I have learnt some better techniques of how to deal with certain behaviours children are demonstrating and now have a better understanding”

“So Informative and enjoyable. Flew by. Wish it was longer!”



Universal SEND Services programme: **Professional Development Groups**

Five virtual group meetings with a Regional Lead.

- Identify a project
- Design an implementation plan
- Implement the plan
- Gather feedback
- Evaluate outcomes and impact

Up to three 1:1 professional conversations with a Whole School SEND regional leader.

[Please click here to complete an expression of interest for the Professional Development Group](#)



[This months Book Recommendation](#)



[Autism Friendly Tips for the festive period](#)



[SAS Localities List](#)

PARENTS & CARERS - KEY WORKERS



A reminder of what the SEND Key working team in SAS offers families:

- Emotional support eg: helping parental mental health and wellbeing
- Practical support eg: basic behaviour strategies, emotional regulation tools
- Information, advice and signposting eg: benefits, charities, local services
- Coordination of services eg: TAC meetings, transition support
- Parent workshops and group sessions

Referrals will continue to be received through the Stronger Families Hub and will be reviewed by the Senior SEND Key Workers in SAS.

If the referral is appropriate for our service, we will offer parents/carers support, information and advice in small informal group session

These sessions will be facilitated by a SEND Key Worker, over three weeks.
3 x 2-3 hour sessions for up to 6 Families.

Parents will be invited to sessions depending on whether their child/children are in primary or secondary education.

For those families who have children under 5 yrs who are not in school, we are planning to arrange similar sessions at local children centres.

We accept referrals from professionals and parents through the Stronger Families Hub

Email: strongerfamilieshub@hillington.gov.uk

or

Call 01895 556006



Team Manager

Priya
Perera

Senior SEND Key Workers

Simmi
Virdee

Debbie
Frank

SEND Key Workers

Clover
Hazlewood

Molly
Crawley

Angela
Woodford

Vickie
Franklin

Angie
Upjohn



Coffee Mornings

Would you be interested in having someone from the SEND Key Working Team attend a parent coffee morning at your setting/school to talk more about what we offer?

If so, please contact the linked SEND Key Worker for your school/setting or email:

Simmi Virdee – Senior SEND Key Worker – svirdee1@hillington.gov.uk

Debbie Frank – Senior SEND Key Worker – dfrank@hillington.gov.uk

SENSORY



HEARING SUPPORT

Useful Links

Become a member of the [National Deaf Children's Society](#).

[Video on the role of a Teacher of the Deaf](#)

[Free British Sign Language course](#)

NDCS PDF Resources

[Deaf Friendly Early Education](#)

[Deaf Friendly Teaching - Primary](#)

[Deaf Friendly Teaching - Secondary](#)

[Deaf Friendly Teaching FE 2020](#)

Apps for learning British Sign Language:

Lingvano – This is an app similar to the popular language app Duolingo, that takes you through various signs and tests you on your understanding in a well sequenced series of learning modules.

Sign BSL – This is available for Android and Apple devices and for free online at www.signbsl.com.

BSL Hands (One and Two) - This is a project by Deaf Active North West which aims to teach 60,000 primary school children the basics of sign language.

NDCS Resources

The National Deaf Children's Society (NDCS) has comprehensive resources for supporting D/deaf children and young people in educational settings. Please click on the websites below:

[Early years education](#) | [Information for professionals](#)
(ndcs.org.uk)

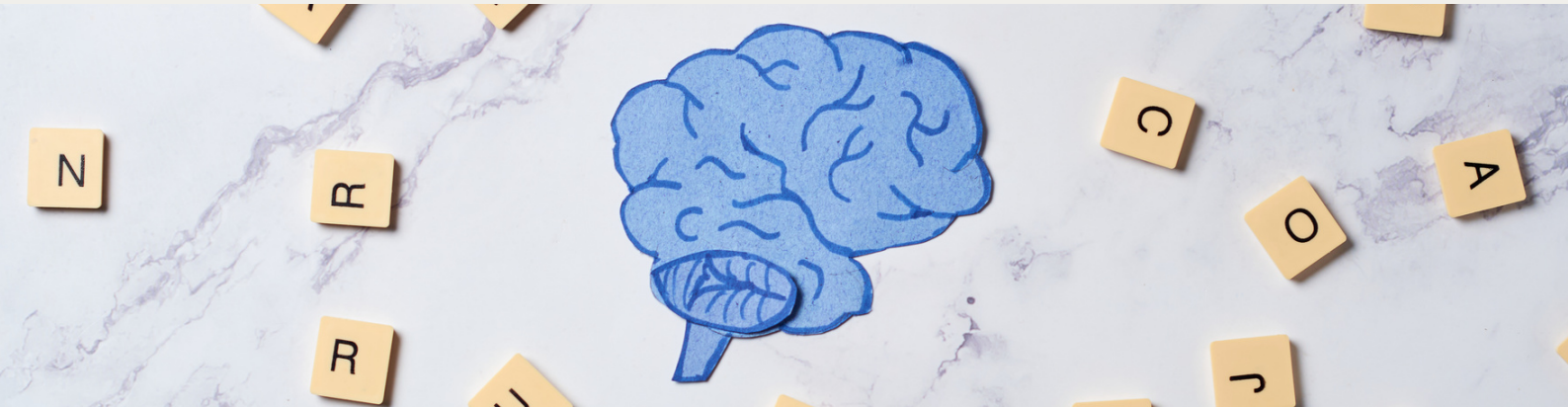
[Primary education](#) | [Information for professionals](#)
(ndcs.org.uk)

[Secondary education](#) | [Information for professionals](#)
(ndcs.org.uk)

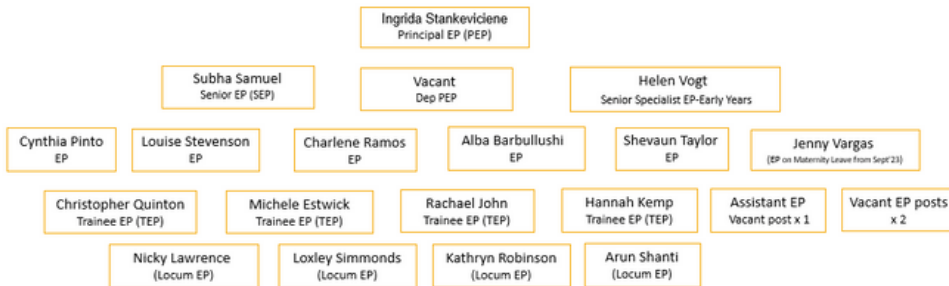
[Professional post-14 resources](#) | [Information for professionals](#)
(ndcs.org.uk)



EDUCATIONAL PSYCHOLOGY SERVICE

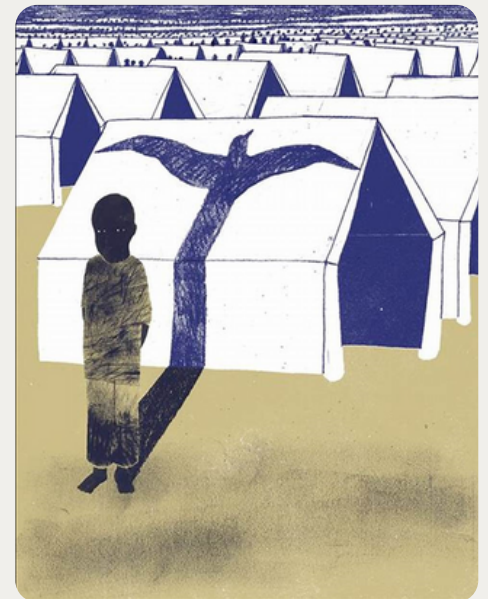


Educational Psychology Service Team



Links to Refugee Project in Hillingdon EPs:

Alba Barbullushi and Cynthia Pinto



ELSA UPDATES

The Lead EP for ELSA (Louise Stevenson) has received a request for ELSAs, their line managers, and EPs to participate in research being carried out by a Year 3 Trainee EP (TEP) at the University of Nottingham as part of their thesis, with the working title: 'What helps and hinders the implementation of ELSA?' Further details are included in the attached recruitment poster and information sheet:

[ELSA Research Information Sheet](#)

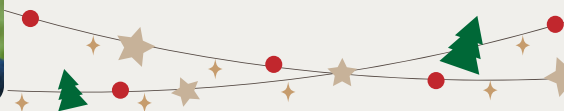
[ELSA Research Recruitment Poster](#)

Please note, if you are interested in taking part, or have any additional questions relating to the research, please contact educationalpsychologyservice@hillingsdon.gov.uk

The new Senior Specialist EP for Early Years - Helen Vogt - is working with settings to set up a Traded Service to support Early Intervention for children with SEND



EPS in Hillingdon is Trading with 73 schools (2 of those out of borough).



SEND STATUTORY SERVICE



HILLINGDON

LONDON



Information for Professionals

TRIBUNALS

If you are involved in SEND Tribunal proceeding, please note that it is in the school's best interest to attend the hearing as a witness for LA or parent/carer in order to avoid being ordered by Tribunal to attend on the day of the hearing. This is causing delays and further challenges in cases. If you have any queries, please liaise with your allocated SEND Officer and/or you can contact us on sentribunals@hillington.gov.uk.

GUIDANCE

EHC Needs Assessment Application Template:
<https://www.hillingdon.gov.uk/send-professionals>

SEND Panel

To attend SEND panel (every Wednesday 1pm virtually) please book a place via email:
echallis@hillington.gov.uk

Please click for [SEND caseload school allocation](#).

PLACEMENTS

We understand there are some pupils who may require a specialist placement attending your setting – and due to the national shortage, one is not available. We consult a range of settings, in and out of borough, independent and maintained but we need to ensure whatever placement is sought is an efficient use of resource. Please continue to advise families to contact SENDIAS for impartial support.

CONSULTATIONS

Please ensure you are completing consultations and returning within the 15 days. A gentle reminder these are shared with parents, and you must consider all reasonable adjustments and support to make a placement successful rather than a refusal.

STRONGER FAMILIES HUB

All referrals relating to Children and Families are now managed through our Stronger Families Hub. If you are a professional and are requesting EHCNA please follow the link below to request a statutory assessment for special educational needs. Please attach the EHC Needs Assessment Application Template from Information for SEND professionals - Hillingdon Council referring through:
<https://www.hillingdon.gov.uk/stronger-families>.

Please note there is no need to call Stronger Families Hub for an update the SEND Service will provide letter with acknowledgment of the request and timeline for the decision and next steps.

If you would like support in completing annual review paperwork please contact Sheila (swynn@hillington.gov.uk)



CITS



Hillingdon
talks | moves | plays
Children's Integrated Therapy Service

Speech and Language Therapy Parent Workshops

Do you have parents at your school who would benefit from a speech and language therapy run workshop? Topics for the workshops are:

- Emotional Regulation;** Monday 20th November 13:30-14:30
- Neurodiversity;** Tuesday 21st November 13:30-14:30
- Stammering;** Wednesday 22nd November 13:30-14:30
- Developmental Language Disorder;** Thursday 23rd November 13:30-14:30

No pre-booking needed, just use this Zoom link on the date and time of the workshop:

<https://uso2web.zoom.us/j/82900831154pwd=MEZkTUhBZzl4SXdoVGpQOEZLU3V2Zz09>

Meeting ID: 829 0083 1154
Passcode: 668955

[Please click here to view the flyer](#)

#DLDDay 20th Oct 2023

What is DLD? Developmental Language Disorder is a persistent language difficulty that can't be explained by another condition. It is lifelong and approximately two children in every classroom are impacted by it. It affects all languages, and is not caused by being speaking more than one language. The Hillingdon Talks, Moves, Plays website has further information and training presentations on DLD for school staff and parents. <https://www.cnwl.nhs.uk/children-integrated-therapy-service>



Please visit the Children's Integrated Therapy Service website:

www.cnwl.nhs.uk/children-integrated-therapy-service for information about the service.

This includes strategies and resources for parents and professionals as well as links to other useful websites.

[Please click here to view the CITS Training Flyer](#)

2023-24.

NOTICE BOARD

ESF Impact form

A kind reminder to please complete the following form at the end of ESF Funding, to demonstrate the effectiveness of ESF over the last year. This form **MUST** be completed for your renewal applications to be considered. ESF Impact Form

SEND Reviews

A SEND review is an evidence based, self-evaluative tool which looks at how your education setting provides for pupils or students with special educational needs and disabilities. Existing good practice is identified and the findings from SEND reviews can help improve SEND provision and strategy, so that learners are appropriately supported to achieve good outcomes.

[Please sign up here for a SEND Review](#)

Hillingdon's SEND teams are committed to improving the services we deliver to our families. **This short survey** forms part of our commitment to incorporate the voice of Hillingdon's families in how we plan and deliver the range of services we provide.. It is anonymous and won't take long. Your feedback is important, and your support and cooperation is appreciated.

[Please click here to view the CAAS Youth and Family Service Update Flyer](#)

Are you Creative?

Design a Logo Competition for Children in Hillingdon!

Design a new Partnership Logo for The Hillingdon Local Area Special Educational Needs and Disabilities and Alternative Provision Partnership. The Logo needs to represent the partnership between Education, Health and Social Care and Alternative Provision, with Children at the heart of everything!

- ★ Winning Logo to be selected by Representatives from Hillingdon LA Partnership
- ★ Prize for winning logo design -Love2Shop voucher - **£50 !** Winning logo will be used on all SEND documentation, emails, strategy, LEAP etc.
- ★ Submit your Logo with your name, age and school or college to: sasinclusion@hillingdon.gov.uk



Deadline
December 20th
12:00 pm.

Hillingdon Parent Carers Forum

This forum enables parents and carers to shape, design, develop, implement and review services in partnership with Hillingdon.

Participation from parents/carers makes a difference, and brings about change using first hand experience.

Please encourage your parents and carers to get involved!

Email: HillingdonPCF@gmail.com

Website: [Hillingdon PCF.com](http://HillingdonPCF.com)

[Please use this link to see all the latest PCF updates](#)

[Please click here to view the List of Useful Contacts](#)