



HILLINGDON  
LONDON

# SEND & INCLUSION NEWSLETTER

MARCH 2024, VOLUME 21

**Subscribe now**

Join our mailing list to  
receive the latest newsletter

[Sign up now](#)



# CONTENTS

## Section 1

### SEND Advisory Service

#### Early Years

#### Schools

#### Parents and Carers - Key Workers

#### Sensory

## Section 2

### Educational Psychology Service

## Section 3

### SEND Statutory Service

## Section 4

### CITS

### Notice Board

# SEND ADVISORY SERVICE



## Partnerships for Inclusion of Neurodiversity (PINS) Pilot

### ADDITIONAL SUPPORT FOR YOUR SETTING

We would like to invite your school to participate in a new project to meet the needs of neurodiverse children in mainstream primary schools. The PINS project will test an innovative model for effective deployment of specialist support on supporting neurodiverse pupils who represent a fast-growing group among the children most likely to benefit from a more inclusive environment.

**[Please click here to view the PINS Poster and to register your interest.](#)**

## SEND Reviews

Please could you complete the following form to express your interest in having a SEND Review:

**[SEND Review Form](#)**

## Language Link Champion 2024

The Hillingdon Education Improvement team & The Send Advisory Service is funding Infant, Junior and Secondary Language Link for schools within Hillingdon. This is an excellent resource created by Speech and Language Therapists which assesses and provides support for young people with regards to speech, language and communication needs. We have seen some excellent work being carried out in schools and it is so wonderful to hear how you are finding the programme.

In order to build a supportive community focused on implementing Language Link and promoting SLCN in schools we are asking you all to have your chance of becoming a Language Link Champion. All schools can identify a Language Link Champion (or more) who can form our lovely network. We will be able to network, share good practice and offer advice and support to each other. This is new - so we are also open to ideas of how we can shape this moving forward.

Please fill in the [questionnaire linked](#) and email me with any questions at [hcasey@hillingdon.gov.uk](mailto:hcasey@hillingdon.gov.uk)

## Guidance

[Non-Statutory Funding Guidance](#)  
(Updated Jan 2024)

[Hillingdon Banded Funding Model](#)

[Early Years Inclusion Funding Guidance](#)

[My Support Plan Advice & Guidance](#)

[Referrals to SEND Advisory Service via Stronger Families Hub](#)

[Information for SEND professionals](#)

## Key Documents

[Early Identification Toolkit](#)

[SAS Advice Line](#)

[SAS Training Brochure](#)

[The OAP Checklist](#)

## ESF Panel Information

The ESF panel is held every Thursday 10am-1pm,

**[Please click here to sign up for the ESF Panel](#)**

# EARLY YEARS



## Early Years Forum Registration June 2024

**Date: Wednesday 5th June 2024**

**Time: 9.30am - 11.30am**

**Location: TBC**

**[Please click here to register!](#)**

**Upcoming Trainings:  
(please click for further info)**

**[Role of the Inclusion Coordinator](#)**

**[Speech, Language and Communication in Early Years](#)**

**[My Support Plan Training](#)**

It has been a year since the Early Years Team have changed the way it works with settings. We would like to gather your feedback on how this is for you and potential improvements we can make to our service.

**[Please click here for the feedback form](#)**



**[Please click here for the Early Years Inclusion Funding Guidance](#)**

**[Please click here for the EY Strategy Resource Bank 2023-2024](#)**

**[Please click here for the Children Centre's Autumn Flyer](#)**



**NEW Early Years Entitlement Funding**

Please can you complete the survey applicable to you, this is to gather your thoughts on the new funding to come into place in 2024.

**[Group childcare provider survey](#)**

**[Childminder survey](#)**

# SCHOOLS



## SENCO Forum

Thank you for joining us on Wednesday 20th March for our School's SENCO Forums. Please click on the link for the SENCO Forum Slides for your review: [School's SENCO Forum Slides](#)

Please see below the link for registration at the next Schools Forum

**Date: Wednesday 5th June 2024**

**Time: 1.00 pm to 3.00pm**

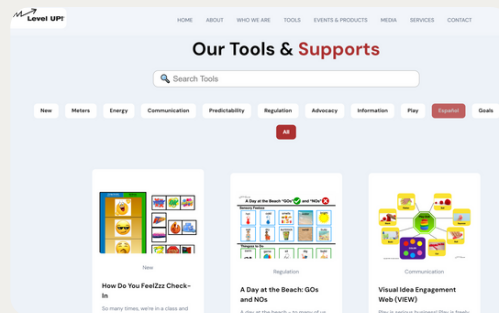
**Location: Civic Centre, High Street, Uxbridge UB8 1NN**

**School's June SENCO Forum - [SIGN UP HERE](#)**

## WORLD AUTISM ACCEPTANCE WEEK 2024

While autistic people share these similar characteristics to some degree, they are also all different from each other. This is because autism is considered a spectrum. The autism spectrum is not linear from high to low but varies in every way that one person might vary from another (AET, 2024)

There is no 'typical' autistic person. Every autistic individual has their own strengths, differences and needs, their own life journey and their own unique story (AET, 2024)



**LEVEL UP!** offer great tools and supports which can be adapted to meet individual needs!



Get fundraising this World Autism Acceptance Week and take part by doing your own 5km Spectrum Colour Walk wherever you are. [Click here to find out more.](#)

### Autistic Young Experts Panel

The Autism Education Trust (AET) is supported by a panel of Autistic Young Experts who consult on AET projects, materials and strategies.



### The AET Terminology Guide

### The Autism Toolkit by Ambitious About Autism



[Whole School SEND: New Teacher Handbook](#)

[Raise Peer Awareness In 2024 Autism Acceptance Week!](#)

[AET Phase Specific Resources](#)

# PARENTS & CARERS - KEY WORKERS



## Easter Holiday Activities

[Easter HAF programme - Hillingdon Council](#)

[Easter Activity Programme - Hillingdon Council](#)

[The Grand Cranford Park Egg Hunt](#)

[Drop-In Holiday Activities](#)

[Best Days Out In Hillingdon, Greater London For Teenagers](#)

[Miles for Smiles - Home](#)

[About SEND Family Support | Support & Events for Parents](#)



**Team Manager**

**Priya  
Perera**

**Senior SEND Key Workers**

**Simmi  
Virdee**

**Debbie  
Frank**

**SEND Key Workers**

**Clover  
Hazlewood**

**Molly  
Crawley**

**Angela  
Woodford**

**Vickie  
Franklin**

**Angie  
Upjohn**



## Coffee Mornings

Would you be interested in having someone from the SEND Key Working Team attend a parent coffee morning at your setting/school to talk more about what we offer?

If so, please contact the linked SEND Key Worker for your school/setting or email:

Simmi Virdee – Senior SEND Key Worker –  
svirdee1@hillingdon.gov.uk

Debbie Frank – Senior SEND Key Worker –  
dfrank@hillingdon.gov.uk

**A reminder of what the SEND Key working team in SAS offers families:**

- Emotional support eg: helping parental mental health and wellbeing
- Practical support eg: basic behaviour strategies, emotional regulation tools
- Information, advice and signposting eg: benefits, charities, local services
- Coordination of services eg: TAC meetings, transition support
- Parent workshops and group sessions

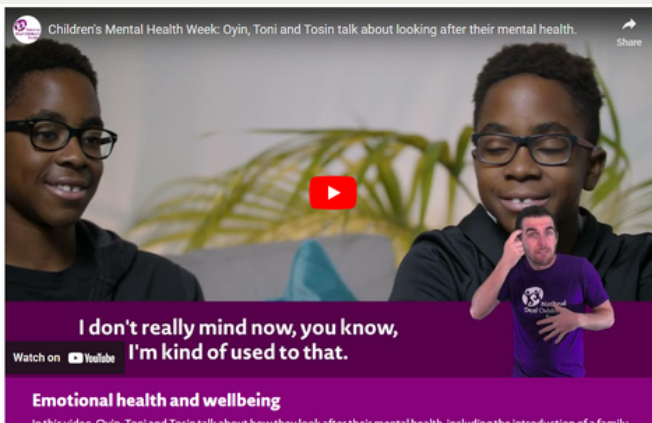


# SENSORY



## HEARING SUPPORT

We'd like to place a particular focus on Emotional health and wellbeing for families of deaf children ([ndcs.org.uk](https://ndcs.org.uk))



BSL week is 18th - 24th March 2024 and we are encouraging people to wear blue to celebrate it! For more information see the link [here](#).

### Useful Links

[Learn to fingerspell](#) | [Learning BSL](#) ([ndcs.org.uk](https://ndcs.org.uk))  
Learn to fingerspell | Learning BSL

**Videos, posters and postcards to help you learn the British fingerspelling alphabet:**

[BSL videos and resources](#) | [Learning BSL](#) ([ndcs.org.uk](https://ndcs.org.uk))  
[what-are-you-feeling-resource-digital 2023.pdf](#)

### NDCS PDF Resources

[Deaf Friendly Early Education](#)

[Deaf Friendly Teaching - Primary](#)

[Deaf Friendly Teaching - Secondary](#)

[Deaf Friendly Teaching FE 2020](#)

### NDCS Resources

The National Deaf Children's Society (NDCS) has comprehensive resources for supporting D/deaf children and young people in educational settings. Please click on the websites below:

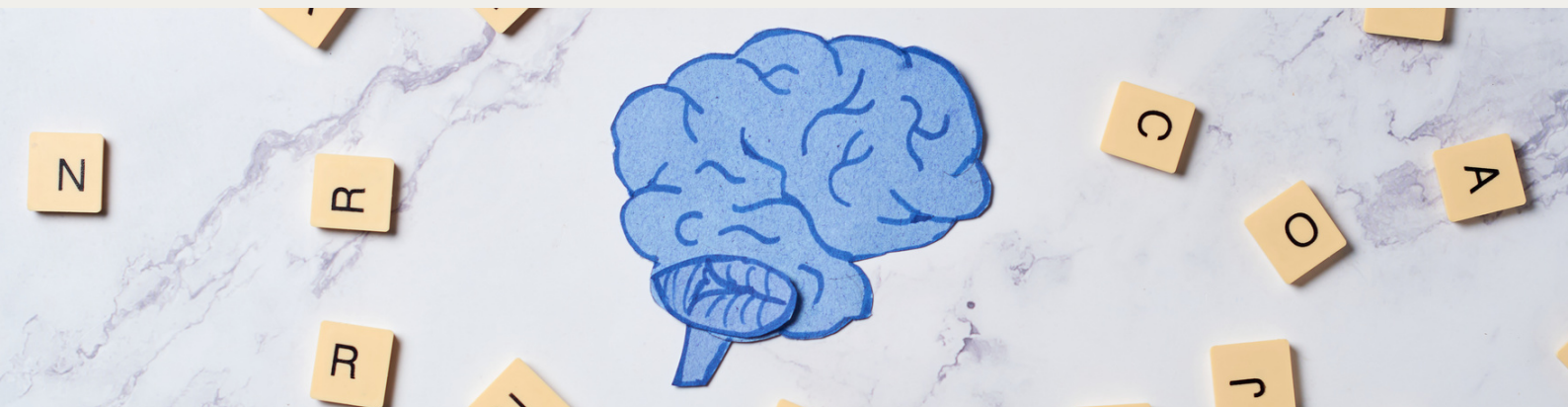
[Early years education](#) | [Information for professionals](#) ([ndcs.org.uk](https://ndcs.org.uk))

[Primary education](#) | [Information for professionals](#) ([ndcs.org.uk](https://ndcs.org.uk))

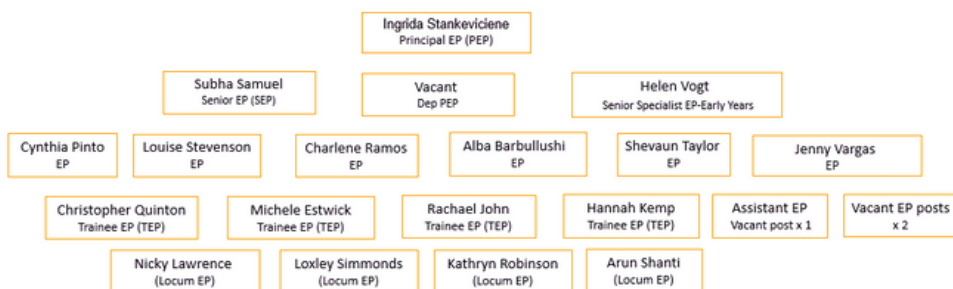
[Secondary education](#) | [Information for professionals](#) ([ndcs.org.uk](https://ndcs.org.uk))

[Professional post-14 resources](#) | [Information for professionals](#) ([ndcs.org.uk](https://ndcs.org.uk))

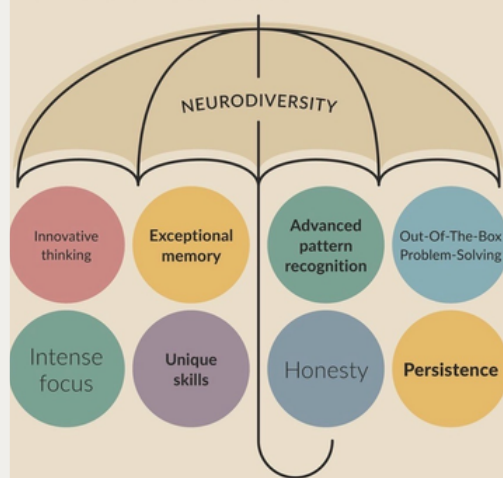
# EDUCATIONAL PSYCHOLOGY SERVICE



## Educational Psychology Service Team



## THE POWER OF NEURODIVERSITY



### Hillingdon Educational Psychology Service Traded EP Offer (2024-2025)

Hillingdon Educational Psychology Service (EPS) has developed a comprehensive offer of support to our community of schools and other settings. This includes our **traded EPS offer** that provides a number of 'packages of support' that can be purchased to meet the individual needs of your setting.

Hillingdon EPS provides a specialist psychological service to schools, nurseries and other educational settings in Hillingdon. We contribute to improving outcomes for children and young people in schools and other educational settings and implement an approach that facilitates positive change. The focus of work can be at the following levels:

- strategic, systems and organisational level
- group and class level
- individual child, young person, staff, adult and family level

SLAs (Service Level Agreement) for academic year 2024-2025 will be sent out to schools in May 2024.

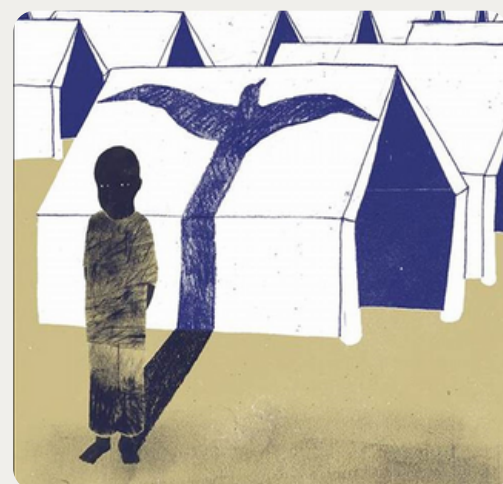
*We advise schools where possible to build in contingency EP time when purchasing initial packages so that you will not be disappointed if additional capacity doesn't exist.*

**For any further informal enquiry about the Hillingdon EP Service, charges, type of support required, please contact the EPS via email: [educationalpsychologyservice@hillingsdon.gov.uk](mailto:educationalpsychologyservice@hillingsdon.gov.uk)**

“It is not our differences that divide us. It is our inability to recognise, accept and celebrate those differences”.  
– Audre Lorde.

The new Senior Specialist EP for Early Years – Helen Vogt – is working with settings to set up a Traded Service to support Early Intervention for children with SEND

Links to Refugee Project in Hillingdon EPs:  
Alba Barbullushi and  
Cynthia Pinto



EPS in Hillingdon is Trading with 73 schools (2 of those out of borough).



# SEND STATUTORY SERVICE



# HILLINGDON

## LONDON



## Information for Professionals

### TRIBUNALS

If you are involved in SEND Tribunal proceeding, please note that it is in the school's best interest to attend the hearing as a witness for LA or parent/carer in order to avoid being ordered by Tribunal to attend on the day of the hearing. This is causing delays and further challenges in cases. If you have any queries, please liaise with your allocated SEND Officer and/or you can contact us on [sentribunals@hillington.gov.uk](mailto:sentribunals@hillington.gov.uk).

### GUIDANCE

EHC Needs Assessment Application Template:  
<https://www.hillingdon.gov.uk/send-professionals>

#### SEND Panel

To attend SEND panel (every Wednesday 1pm virtually) please book a place via email:  
[echallis@hillington.gov.uk](mailto:echallis@hillington.gov.uk)

Please click for [SEND caseload school allocation](#).

### PLACEMENTS

We understand there are some pupils who may require a specialist placement attending your setting – and due to the national shortage, one is not available. We consult a range of settings, in and out of borough, independent and maintained but we need to ensure whatever placement is sought is an efficient use of resource. Please continue to advise families to contact SENDIAS for impartial support.

### CONSULTATIONS

Please ensure you are completing consultations and returning within the 15 days. A gentle reminder these are shared with parents, and you must consider all reasonable adjustments and support to make a placement successful rather than a refusal.

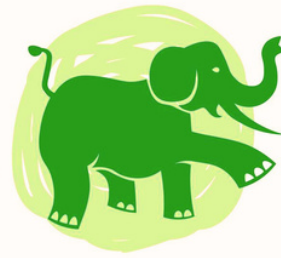
### STRONGER FAMILIES HUB

All referrals relating to Children and Families are now managed through our Stronger Families Hub. If you are a professional and are requesting EHCNA please follow the link below to request a statutory assessment for special educational needs. Please attach the EHC Needs Assessment Application Template from Information for SEND professionals - Hillingdon Council referring through:  
<https://www.hillingdon.gov.uk/stronger-families>.

Please note there is no need to call Stronger Families Hub for an update the SEND Service will provide letter with acknowledgment of the request and timeline for the decision and next steps.

If you would like support in completing annual review paperwork please contact Sheila ([swynn@hillington.gov.uk](mailto:swynn@hillington.gov.uk))

# CITS



## Hillingdon

**talks | moves | plays**

Children's Integrated Therapy Service

**Please click here to view  
the CITS Training Flyer  
2023-24.**

Please visit the Children's Integrated Therapy Service website:  
[www.cnwl.nhs.uk/children-integrated-therapy-service](http://www.cnwl.nhs.uk/children-integrated-therapy-service) for information about the service.

This includes strategies and resources for parents and professionals as well as links to other useful websites.

**CITS Speech and language therapy service are running training for schools and nursery staff on;**

**Total Communication and Alternative and Augmentative Communications (AAC) e.g.:** communication boards, Signalong, using visuals effectively.

**Date:** Friday 7th June  
2 sessions either **9:30-12:30** or **13:30-16:30** (15 spaces per session).

**Location:** Committee room 5 at Civic Centre, Uxbridge

**To book please email [Citsadmin.cnwl@nhs.net](mailto:Citsadmin.cnwl@nhs.net)**



## Upcoming Training

Tuesday 23rd April 2024 - Creating an inclusive sports day

Wednesday 8th May 2024 - Speech and phonology

Thursday 23rd May 2024 - DCD

Tuesday 11th June 2024 - Stammering

# NOTICE BOARD

## ESF Impact form

A kind reminder to please complete the following form at the end of ESF Funding, to demonstrate the effectiveness of ESF over the last year. This form MUST be completed for your renewal applications to be considered. ESF Impact Form

## Free MoneySense SEND Resources!

From lesson plans to engaging activities, MoneySense has everything you need to bring financial education to life. Sign up today to download your free SEND resources and explore budgeting and saving with your class this winter.

Please click here  
to view the  
Pentland Field  
School Outreach  
Programme 23-  
24.

## Speech and Language UK: Family and Young People survey

Does your child struggle with talking and understanding words? If so, we need your help! We want to know what life is like for the 1.9 million children and young people who face challenges with talking and understanding words. That's why we are launching a crucial new family and young person survey to inform our future campaigns and help make sure all children have access to the support they need.

If you are a family member or young person with speech and language challenges, we want to hear about your experience.

## NASEN: New online SEND CPD

Funded by the Department for Education as part of the Universal SEND Services programme, the new units explore the following themes:

Understanding executive function  
Memory for learning  
Developing Maths skills  
Person centred working

Why not set aside 20 minutes to sign in and get started today?

## Hillingdon Parent Carers Forum

This forum enables parents and carers to shape, design, develop, implement and review services in partnership with Hillingdon. Participation from parents/carers makes a difference, and brings about change using first hand experience.

Please encourage your parents and carers to get involved!

Email: [HillingdonPCF@gmail.com](mailto:HillingdonPCF@gmail.com)  
Website: [Hillingdon PCF.com](http://HillingdonPCF.com)

Please use this link to see all the latest PCF updates