

FULL DAY TRAINING ON EMOTIONAL BASED SCHOOL NON-ATTENDANCE (EBSNA)

Course Description:

EBSNA, anxiety-based school avoidance, school refusal, school phobia and school anxiety are just some of the interchangeable terms used to describe CYP who find it challenging to attend school due to the high levels of distress and anxiety they experience. This training provides an exploration into EBSNA, including: What is EBSNA; What is the current prevalence and context surrounding EBSNA; What are the risk factors associated with CYP developing EBSNA; What does theory tell us about EBSNA and How can we support.



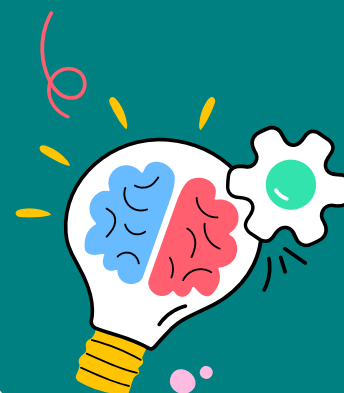
Friday 7th June, 9am - 4pm
The Council Chambers at the
LBH Civic Centre

[CLICK HERE TO SIGN UP!](#)

Emotional Based School Non-
Attendance (EBSNA)



RISK FACTORS



Two Day Course on Behaviour: From Basic Behaviour Modification to Regulatory, Relational, Reflective and Restorative Approaches

Course Description:

Behaviour Session 1: Basics of Behaviour Management and Modification (BMM)

This training includes a deep dive into:

- What we mean by behaviour; The current context around pupil behaviour in the UK, including some common vocabulary/discourse used when discussing pupil behaviour (E.g., Zero tolerance);
- The most prevalent theories around behaviour
- BMM principles and practices, such as how to establish rules and routine behaviours, managing breaches of rules and expectations
- A brief introduction into when the BMM techniques are no longer appropriate and reasonable adjustments should be made, leading on to an introduction to Behaviour Session 2.

Behaviour Session 2: A Trauma Informed Approach and Regulatory, Relational, Reflective and Restorative (RRRR) Practices

This training includes a deep dive into:

- Why BMM principles are not always effective, appropriate, or ethical;
- What is a Trauma Informed Approach and RRRR practices and how do they work;
- How can they fit into a British School system.



Course Date, Time and Location:

Behaviour Session 1: Friday 14th June,
9.00-16.00, Council Chambers, LBH Civic
Centre Uxbridge

Behaviour Session 2: Monday 17th June,
9.00-16.00, Council Chambers, LBH Civic
Centre Uxbridge

Please note both sessions must be attended



[**CLICK HERE TO SIGN UP!**](#)

what is
to be best in
point of view.
Behaviour [b
action or reac
the way a per
behaves to
what is

