



HILLINGDON
LONDON

SEND & INCLUSION NEWSLETTER

JUNE 2024, VOLUME 22

Subscribe now

Join our mailing list to
receive the latest newsletter

[Sign up now](#)



CONTENTS

Section 1

SEND Advisory Service

Early Years

Schools

Parents and Carers - Key Workers

Sensory

Section 2

Educational Psychology Service

Section 3

SEND Statutory Service

Section 4

CITS

Notice Board

SEND ADVISORY SERVICE



[Please click here to view the Hillingdon Post-16 Prospectus 2023-2024.](#)

Our post 16 prospectus will help you make decisions about your next step - whether you're thinking about carrying on with your studying or enrolling on a traineeship or apprenticeship.

Speech and Language Link Info

[Please click here to view the upcoming Speech and Language Link Trainings](#)

There will be further bespoke Hillingdon training to follow

The EY Assessment Centre in Ruislip Gardens

The EY assessment centre in Ruislip Gardens is now open and ready to start receiving children. As we are considering children with complex needs, there should be a supporting SEND professional already involved in some capacity (e.g. SAS, Portage etc.). Therefore the referral should be made by the supporting SEND professional. Unfortunately, we cannot accept direct referrals from nurseries or families.

The request will be reviewed by members of the 0-5 EHN/complex needs panel, and if agreed in principle, will be followed up with an observation by the Assessment centre rep (in collaboration with the referrer where possible). We recognise that SENCOS/Nursery Leads may have children within their setting who are finding it extremely difficult to access the nursery environment and may benefit from attendance at the EY Assessment centre. Please speak to your EY SEND Advisor to see whether a referral may be appropriate and if so, you should hold preliminary discussions with the parents/carers before the advisor makes the referral for you, managing expectations that this is a panel decision as to whether this may be an appropriate placement.

<https://www.ruislipgardensschool.co.uk/Assessment-Centre/>

Guidance

[Non-Statutory Funding Guidance \(Updated May 2024\)](#)

[Hillingdon Banded Funding Model](#)

[Early Years Inclusion Funding Guidance](#)

[My Support Plan Advice & Guidance](#)

[Referrals to SEND Advisory Service via Stronger Families Hub](#)

[Information for SEND professionals](#)

Key Documents

[Early Identification Toolkit](#)

[SAS Advice Line](#)

[SAS Training Brochure](#)

[The OAP Checklist](#)

ESF Panel Information

The ESF panel is held every Thursday 10am-1pm,

[Please click here to sign up for the ESF Panel](#)

EARLY YEARS



Sharing good practice with others

At Busy Bees Heathrow we have a sign of the week to support children across the centre to develop their sign skills. This is also then used in the children's day to day routines. They also learn songs with the signs too to enhance their understanding and communication. As we have a child in the nursery that is starting to use sign along we thought this would be a great way to make this a part of our provision and not just something that we use for one child. this also helps the child communicate with other children more effectivity.



Please find below a lovely transition booklet that you can edit to personalise for the individual child moving to primary school.

Starting Primary School Transition Pack 1.docx

If you wish to sign up for a send review for the next academic year please sign up below:

<https://forms.office.com/e/LayZ2Zi>
khG



Please click here for the Early Years Inclusion Funding Guidance

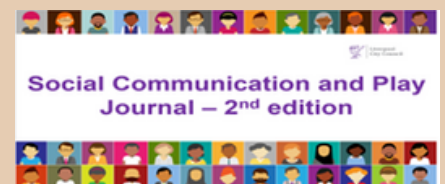
Please click here for the EY Strategy Resource Bank 2023-2024

Please click here for the Children Centre's Autumn Flyer



A Friendly Reminder....

There will no Early years inclusion funding (EYIF) panel for the months of July, August and September. The EYIF application is now closed for the summer and will reopen again the beginning of September.



'Identifying what each unique child "knows and can do" is the foundation of inclusive early years practice'

Excel editable tracking version linked below:
Excel Version

SCHOOLS

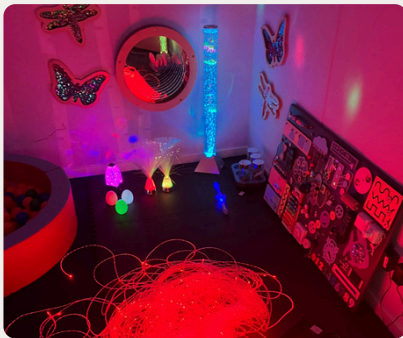


SENCO Forum

Thank you for joining us on Wednesday 5th June for our School's SENCO Forums.

Please click on the link for the SENCO Forum Slides for your review: [School's SENCO Forum Slides](#)

celebrating good practice



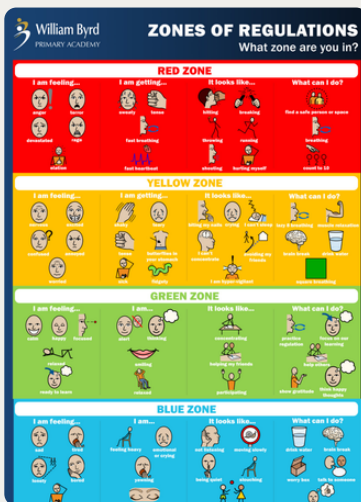
Sensory Room,
Whiteheath Infant School



Speech and Language home packs,
John Locke Academy



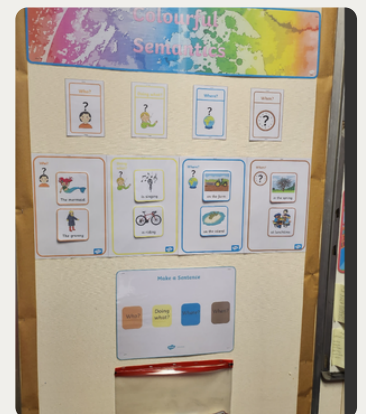
Zones of Regulation display,
Sacred Heart Catholic Primary



Zones of Regulation Poster,
William Byrd Primary



Growth Mindset and Resilience
resources,
St Mary's Catholic Primary
School



Colourful Semantics Display,
Hayes Park School

Transition Support Resources

LBH Primary to Secondary Guidance

AET supporting learners with transition

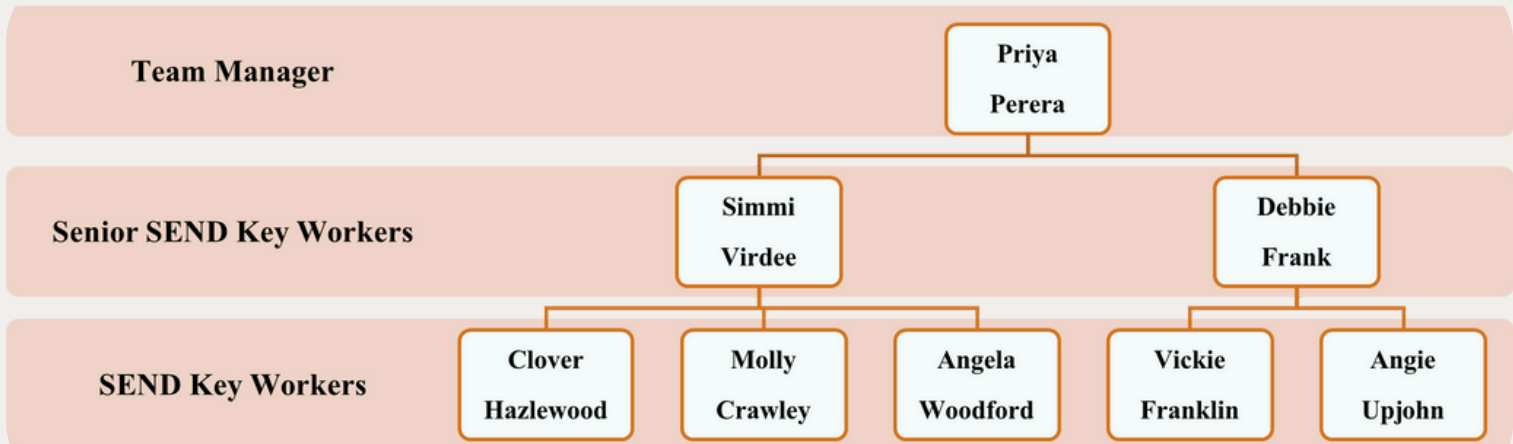


PARENTS & CARERS – KEY WORKERS



A goodbye and thank you to Priya and Debbie!

We would like to thank both Priya and Debbie for all their hard work, dedication, and for the positive impact they've had during their time in Hillingdon. Your contributions have been invaluable and your presence will be greatly missed! We wish you all the best in your future endeavours!



Coffee Mornings

Would you be interested in having someone from the SEND Key Working Team attend a parent coffee morning at your setting/school to talk more about what we offer?

If so, please contact the linked SEND Key Worker for your school/setting or email:

Simmi Virdee – Senior SEND Key Worker – svirdee1@hillingdon.gov.uk

Debbie Frank – Senior SEND Key Worker – dfrank@hillingdon.gov.uk

A reminder of what the SEND Key working team in SAS offers families:

- Emotional support eg: helping parental mental health and wellbeing
- Practical support eg: basic behaviour strategies, emotional regulation tools
- Information, advice and signposting eg: benefits, charities, local services
- Coordination of services eg: TAC meetings, transition support
- Parent workshops and group sessions

SENSORY



HEARING SUPPORT

Useful Links

[Learn to fingerspell | Learning BSL \(ndcs.org.uk\)](https://www.ndcs.org.uk)
[Learn to fingerspell | Learning BSL](#)

Videos, posters and postcards to help you learn the British fingerspelling alphabet:

[BSL videos and resources | Learning BSL \(ndcs.org.uk\)](#)
[what-are-you-feeling-resource-digital 2023.pdf](#)

NDCS PDF Resources

[Deaf Friendly Early Education](#)

[Deaf Friendly Teaching - Primary](#)

[Deaf Friendly Teaching - Secondary](#)

[Deaf Friendly Teaching FE 2020](#)

National Deaf Children's Society | Supporting deaf children

We are the National Deaf Children's Society, the leading charity for deaf children and young people. We're here to support every deaf child who needs us.

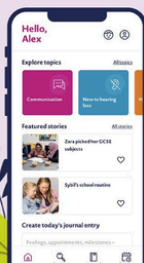


[Accessibility](#) | [Documents and resources](#) | [Members area](#) | [Donate](#)
[Helpline](#) | [Contact us](#) | [Search](#)

[About us](#) | [Information and support](#) | [Get involved](#) | [Our services](#) | [Deaf Child Worldwide](#) | [Your Community](#)

My NDCS: a free app for parents of deaf children

[Learn More](#)



NDCS Resources

The National Deaf Children's Society (NDCS) has comprehensive resources for supporting D/deaf children and young people in educational settings. Please click on the websites below:

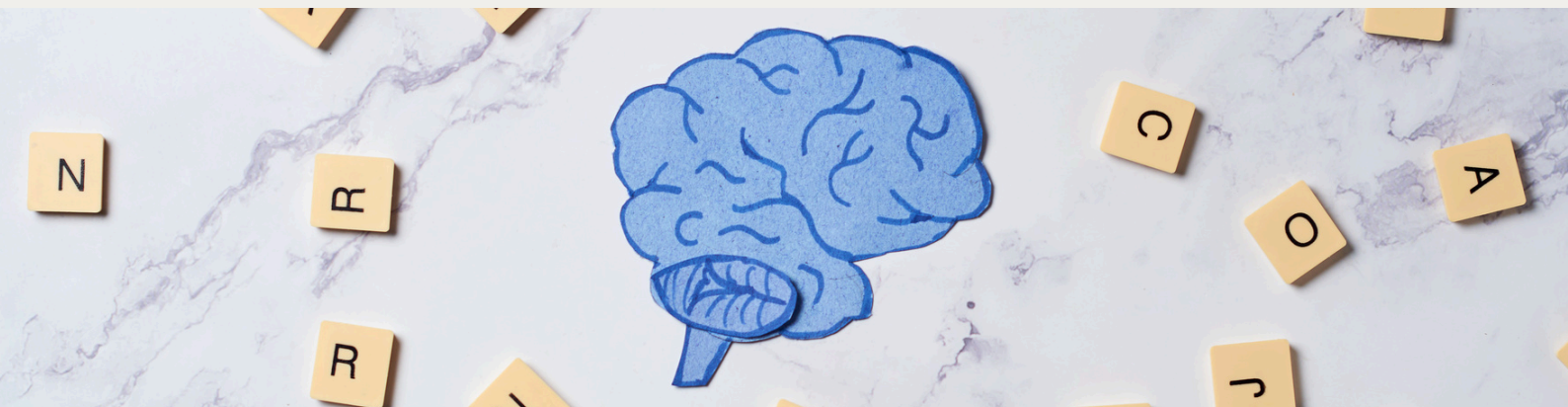
[Early years education](#) | [Information for professionals \(ndcs.org.uk\)](#)

[Primary education](#) | [Information for professionals \(ndcs.org.uk\)](#)

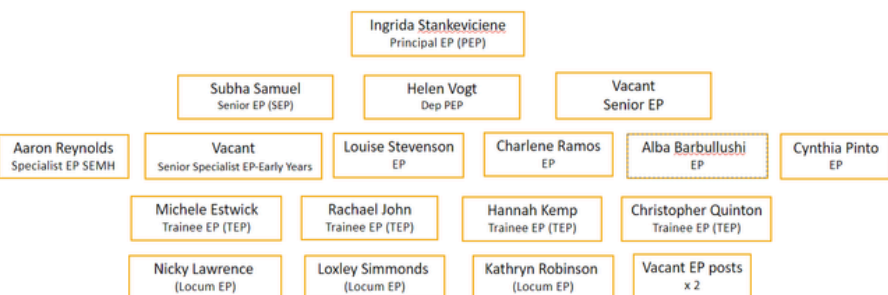
[Secondary education](#) | [Information for professionals \(ndcs.org.uk\)](#)

[Professional post-14 resources](#) | [Information for professionals \(ndcs.org.uk\)](#)

EDUCATIONAL PSYCHOLOGY SERVICE



Educational Psychology Service Team



EPS Shares:

Please click on the link to access

Changes in the concept of Autism

The Anxious Generation by Jonathan Haidt

A Bit of Optimism podcast - Free on The Podcast App

Hillingdon EPS Traded Offer September 2024 to August 2025



The EPS is looking at developing a training brochure. Please scan the QR code to record your training interests and how you would prefer to buy in training - through school based bespoke training or through centrally delivered training at the Civic Centre along with other settings.

EPS Training Brochure



September 2023 - August 2024

EPS completed 516 EHCNAs and 700 days of Traded time in schools and settings!

EPS continue building partnerships with other services and strong links with SAS, Virtual School, Refugee Project, stakeholders in Health services".

ELSA Supervision Feedback Form 2023-2024



ELSAs to provide feedback about their supervision experience so that EPS continue to improve the experience for those attending.

SEND STATUTORY SERVICE



HILLINGDON
LONDON



MEET THE SEND TEAM

“Meet the SEND Team” drop-in sessions are being held at the **Civic Centre, Committee Room 5**, from 9am to 12:30pm on the following dates:

11th July
17th September
12th November
14th January 2025

Please note these are drop in sessions and you do not need to sign up to attend.

PLACEMENTS

We understand there are some pupils who may require a specialist placement attending your setting – and due to the national shortage, one is not available. We consult a range of settings, in and out of borough, independent and maintained but we need to ensure whatever placement is sought is an efficient use of resource. Please continue to advise families to contact SENDIAS for impartial support.

CONSULTATIONS

Please ensure you are completing consultations and returning within the 15 days. A gentle reminder these are shared with parents, and you must consider all reasonable adjustments and support to make a placement successful rather than a refusal.

STRONGER FAMILIES HUB

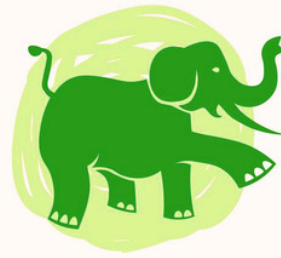
All referrals relating to Children and Families are now managed through our Stronger Families Hub. If you are a professional and are requesting EHCNA please follow the link below to request a statutory assessment for special educational needs. Please attach the EHC Needs Assessment Application Template from Information for SEND professionals – Hillingdon Council referring through:
<https://www.hillingdon.gov.uk/stronger-families>.

Please note there is no need to call Stronger Families Hub for an update the SEND Service will provide letter with acknowledgment of the request and timeline for the decision and next steps.

If you would like support in completing annual review paperwork please contact Sheila (swynn@hillingdon.gov.uk)



CITS



Hillingdon
talks | moves | plays
Children's Integrated Therapy Service

**Please click here to view
the CITS Training Flyer
2023-24.**

Please visit the Children's Integrated Therapy Service website:
www.cnwl.nhs.uk/children-integrated-therapy-service for information about the service.

This includes strategies and resources for parents and professionals as well as links to other useful websites.

Did you know?

CITS have a website and are on social media!

[Instagram](#) [Facebook](#) [Twitter](#) [Website](#) [LinkTree](#)

Please check us out for further information, resources and support.

Recent content includes; Signalong signs, Deafness awareness social media account links, tips for supporting deaf children in the classroom, information on parent training sessions, play skills advice and tools for cutting.



Hillingdon Plays advice sessions

- Yeading Children's Centre**
• Tuesday 7 May 2024 (10am to 11.30am)
- Yiewsley Children's Centre**
• Friday 14 June 2024 (9.30am to 11am)
- South Ruislip Children's Centre**
• Friday 19 July 2024 (1pm to 2.30pm)
- Harefield Children's Centre**
• Monday 19 August 2024 (1.30pm to 3pm)

plays



Upcoming Training

**Tuesday 11th June 2024
14:00 to 15:00
Stammering**

Contact details

Children's Integrated Therapy Service (CITS)

Phone: 01895 488 200

Lines are open Monday to Friday (excluding bank holidays)

9am to 5pm

Email: citsadmin.cnwl@nhs.net

NOTICE BOARD

ESF Impact form

A kind reminder to please complete the following form at the end of ESF Funding, to demonstrate the effectiveness of ESF over the last year. This form **MUST** be completed for your renewal applications to be considered. ESF Impact Form

The NASEN PfaEY

Exciting opportunity for Hillingdon Schools and colleges!

The NASEN PfaEY project is being relaunched as a Professional development group. We are the first local authority to be offered this opportunity.

Please register interest on the PDF by clicking here. The closing date is **July 4th.**

Please click here
to view the
Pentland Field
School Outreach
Programme 23-
24.

Language Link Champions

On Monday 20th May our wonderful Language Link Champions met for their first networking event at the civic centre. It was a great morning where staff were able to come together, share their ideas and help problem solve. There is incredible work going on in our settings and it was lovely to be able to share and celebrate this.

Hillingdon is supporting our mainstream settings by funding a subscription for Infant, Junior and Secondary. Our Language Link Champions are doing invaluable work in implementing this across our settings to promote early identification and supporting our CYP to progress and thrive.

If you would like to become a Language Link Champion for your setting please do fill in the link attached: <https://forms.office.com/e/q1UWEGeA4Z>

Hillingdon LEAP

Our Vision

We aspire to deliver a world-class education system for Hillingdon residents through three key areas of development:

1. Strengthen LA-schools education improvement partnership
2. Refocus on vulnerable and disadvantaged learners
3. Move towards even more integrated ways of working.

For further information, please click below.



Our Services

We aspire to deliver a world-class education system for Hillingdon residents through three key areas of development

Leap

Hillingdon Parent Carers Forum

This forum enables parents and carers to shape, design, develop, implement and review services in partnership with Hillingdon.

Participation from parents/carers makes a difference, and brings about change using first hand experience.

Please encourage your parents and carers to get involved!

Email: HillingdonPCF@gmail.com

Website: [Hillingdon PCF.com](http://HillingdonPCF.com)

Please use this link to see all the latest PCF updates