



Ascent

A project of the
London VAWG Consortium

Funded by
London Councils



**London
VAWG
Consortium**

The London VAWG consortium and the Ascent Partnership



Ascent is a partnership project undertaken by the London Violence Against Women and Girls (VAWG) Consortium, it delivers a range of services for survivors of domestic and sexual violence, under six themes, funded by London Councils. The six themes are:

- Advice and Counselling
- Domestic and Sexual Violence Helplines
- Ending Harmful Practices
- Specialist Refuge provision
- Support Services to Organisations
- Prevention

The Ascent project has been running since 2013 and is currently funded until 2026.

The Ascent Prevention Partnership



The partners in the Ascent Prevention strand are:

- [Women's Resource Centre \(Lead Partner\)](#)
- [FORWARD](#) – African women's led organisation working to end VAWG
- [IMECE](#) – Supporting Turkish, Kurdish and Cypriot Turkish women & BAMER women
- [IKWRO](#) – Supporting Middle Eastern, North African and Afghan women and girls
- [JWA](#) – Supporting Jewish women and children affected by domestic abuse & sexual violence
- [LAWRS](#) – Supporting Latin American women

Our work as a partnership consisting of by and for BME organisations equips us with a unique approach to our work.

Our offer



- Our approach is in line with Ofsted's Review of Sexual Abuse in Schools (2021) which recommends a whole school approach. The whole school approach works with school and out of school settings to support your Relationships, Sex and Health Education curriculum.
- We focus on safeguarding, capacity building and learning.
- Our Partnership aims to:
 - empower professionals and young people.
 - develop awareness and behaviours that embed the importance of healthy relationships
 - tackle attitudes and beliefs that cause violence and abuse.
- Our delivery is needs-based and aims to prevent domestic abuse and sexual violence among children and young people. We recognise that all children and young people are at risk of abuse.
- The Partnership responds to the need for early engagement of boys and young men in order to challenge ideas and behaviours that lead to violence and abuse.

Our aims and objectives



After taking part in healthy relationships workshops with the Ascent Prevention Partnership Children and Young people will be able to:

- Identify the components of a healthy relationship
 - Recognise signs of domestic and sexual abuse
 - Know where to get support
- Professionals taking part in the Healthy relationships workshops will be able to:
- Identify the components of a healthy relationship
 - Recognise signs of domestic and sexual abuse
 - Know where to get support (and where to signpost and/or refer young people to)
- &
- Will feel more confident when addressing issues of young people
 - Increase their knowledge of the issues raised.

Where we do we work



Our service is a Pan London service – however to ensure equitable and equal service delivery we are currently prioritising the following boroughs.

- Barking & Dagenham
- Bromley
- City of London
- Greenwich
- Hillingdon
- Kensington & Chelsea
- Kingston Upon Thames
- Newham
- Richmond Upon Thames
- Tower Hamlets
- Waltham Forest

Find out more



To enquire about our workshops or training please email:
ilana@jwa.org.uk

London Councils represents and champions London's 32 boroughs and the City of London, serving local communities, businesses and amplifying the voice of Londoners. They are a cross party organisation that works on behalf of all of their member authorities regardless of political persuasion. They work with partners to deliver sustainable change, address inequalities and make London a fairer place for all.

<http://www.londoncouncils.gov.uk/services/grants>

HEALTHY RELATIONSHIPS

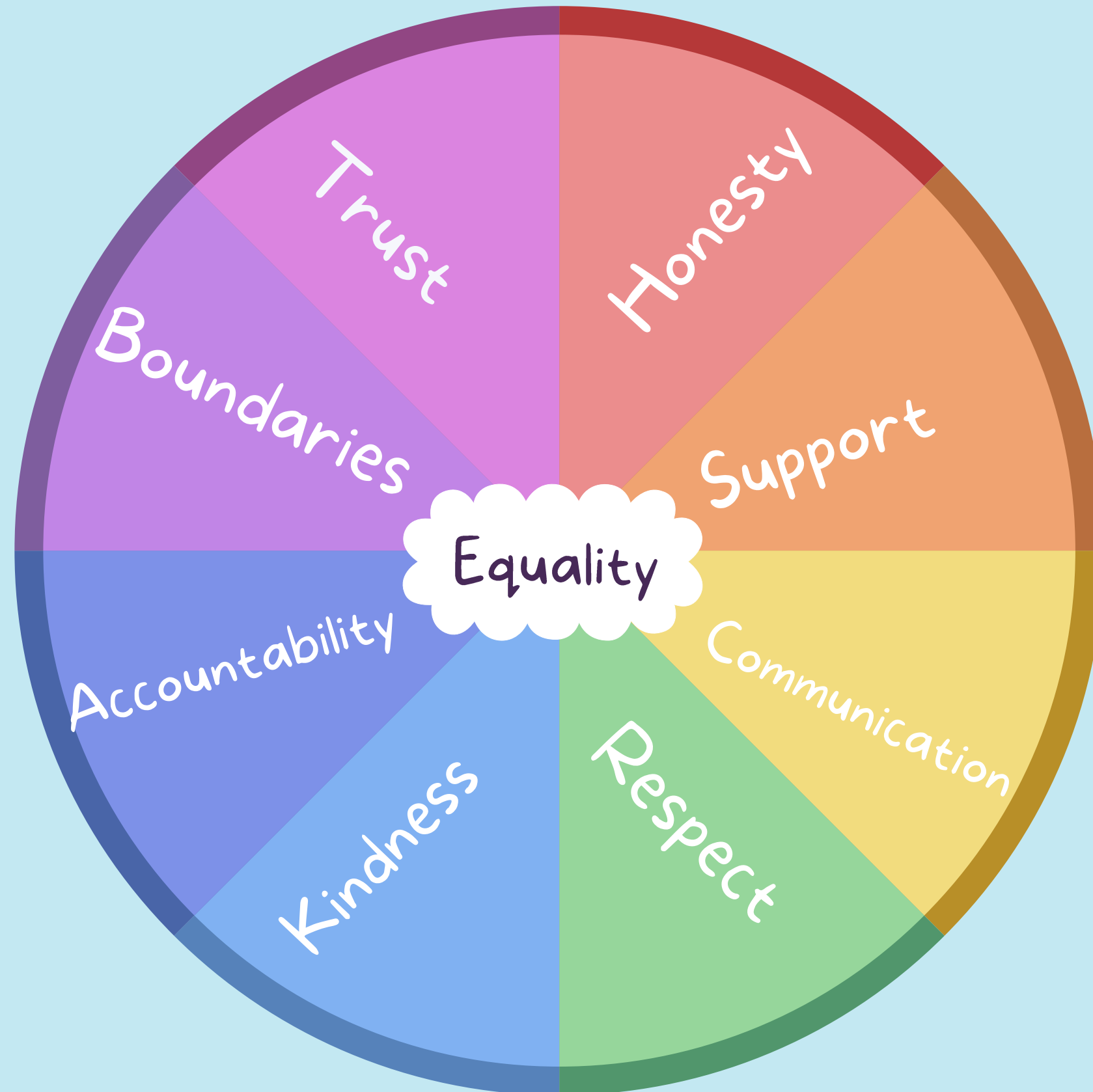
EDUCATION

Examples from our
workshops & training



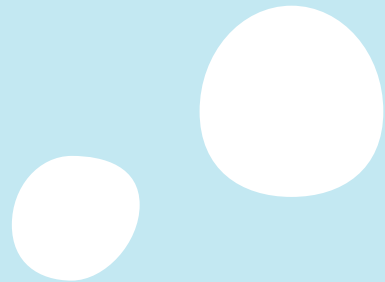
JEWISH WOMEN'S AID

WHAT DO YOU VALUE MOST IN A RELATIONSHIP?





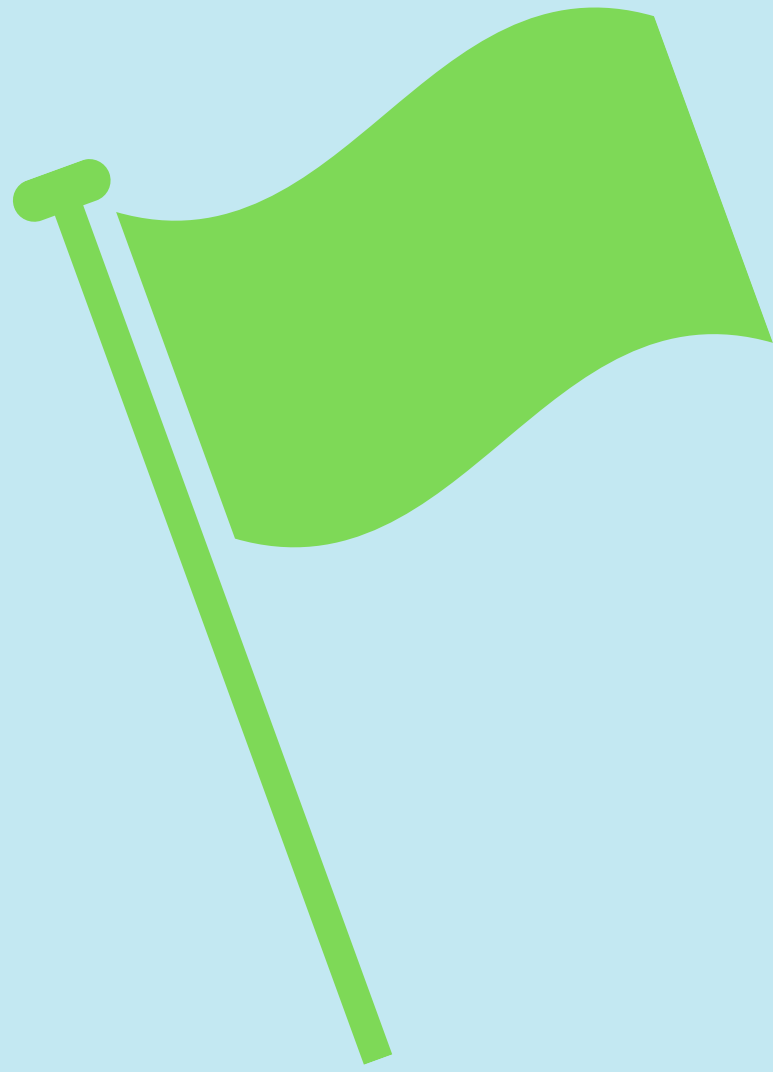
WHAT IS
POWER?



WHAT'S THE PROBLEM?



HEALTHY

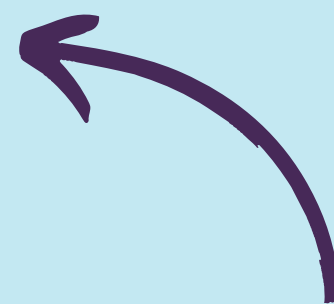


UNHEALTHY





WHAT HAVE YOU HEARD ABOUT CONSENT BEFORE?



Is it that simple?



LEGAL DEFINITION OF CONSENT:

A person consents if they agree "by **choice**, and has the **freedom** and **capacity** to make that choice."

(Sexual Offences Act, 2003)



ALWAYS REMEMBER FRIES!

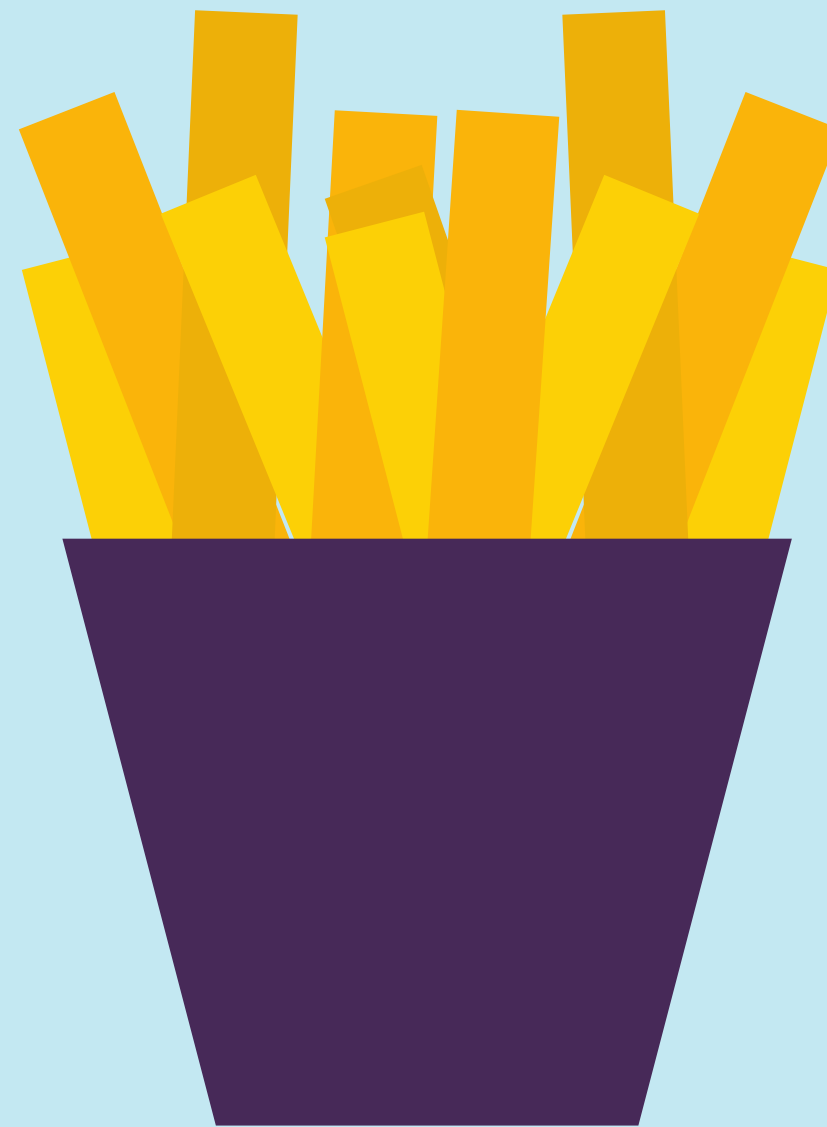
Freely given

Reversible

Informed

Enthusiastic

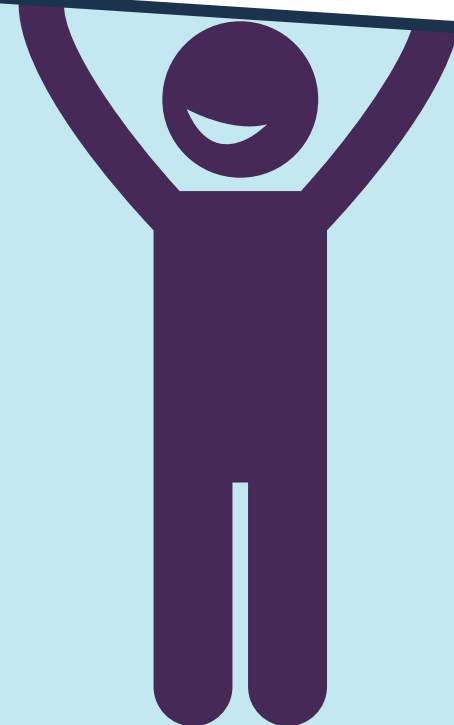
Specific



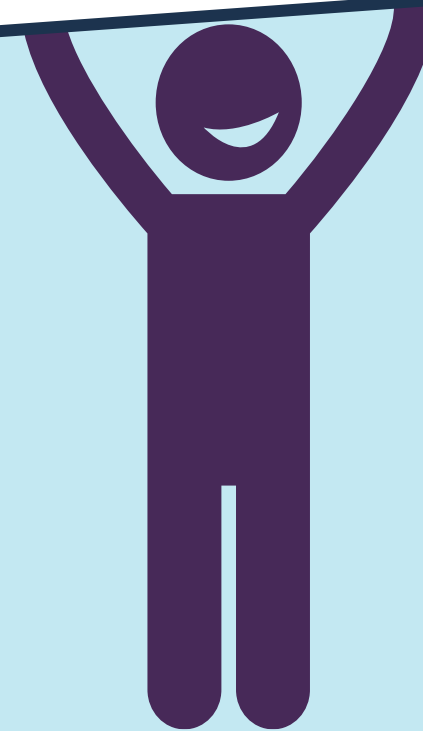


WHAT DO YOU THINK ABOUT...?

Strongly Agree

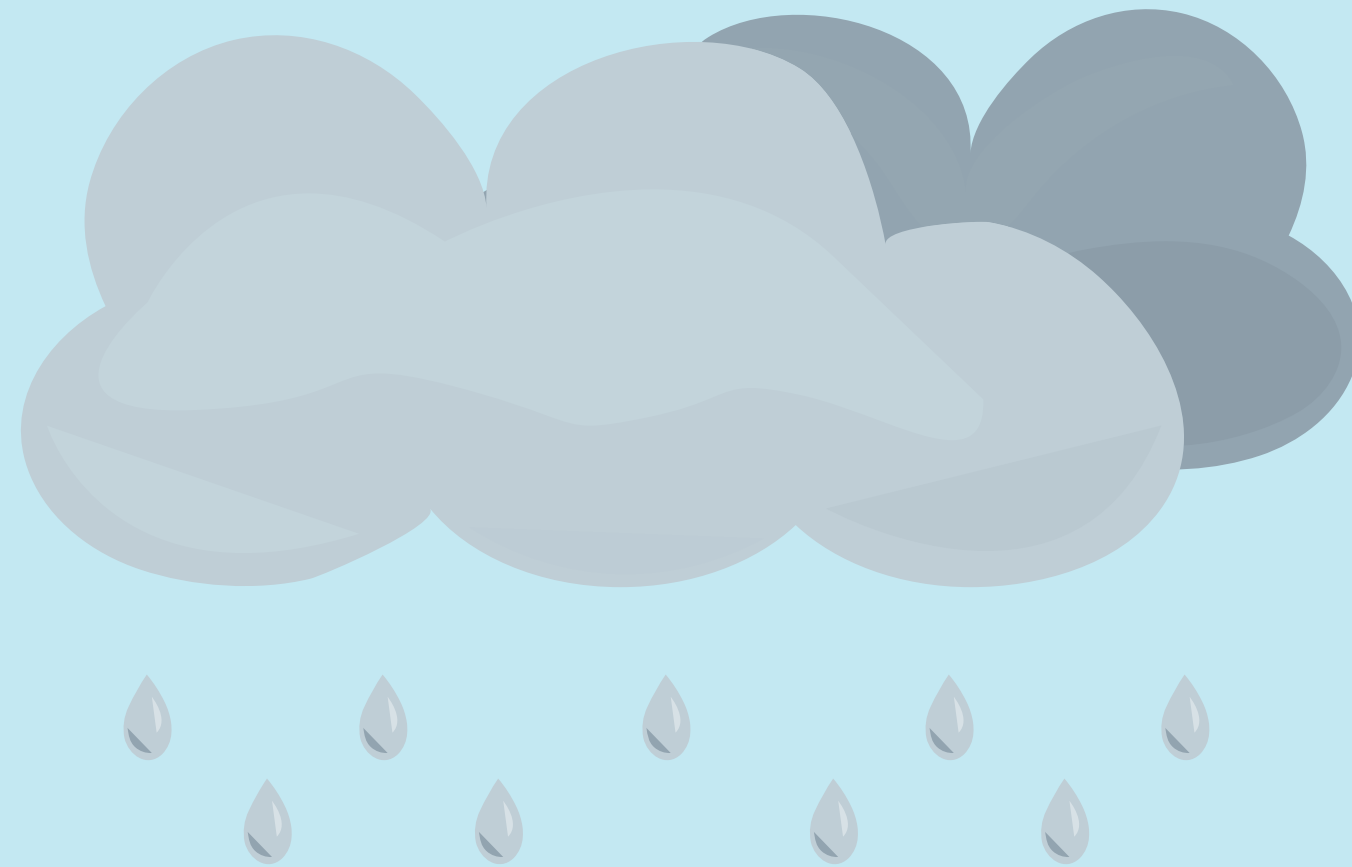


Strongly Disagree





WHAT ARE THE IMPACTS OF SOMEONE EXPERIENCING RELATIONSHIP ABUSE?

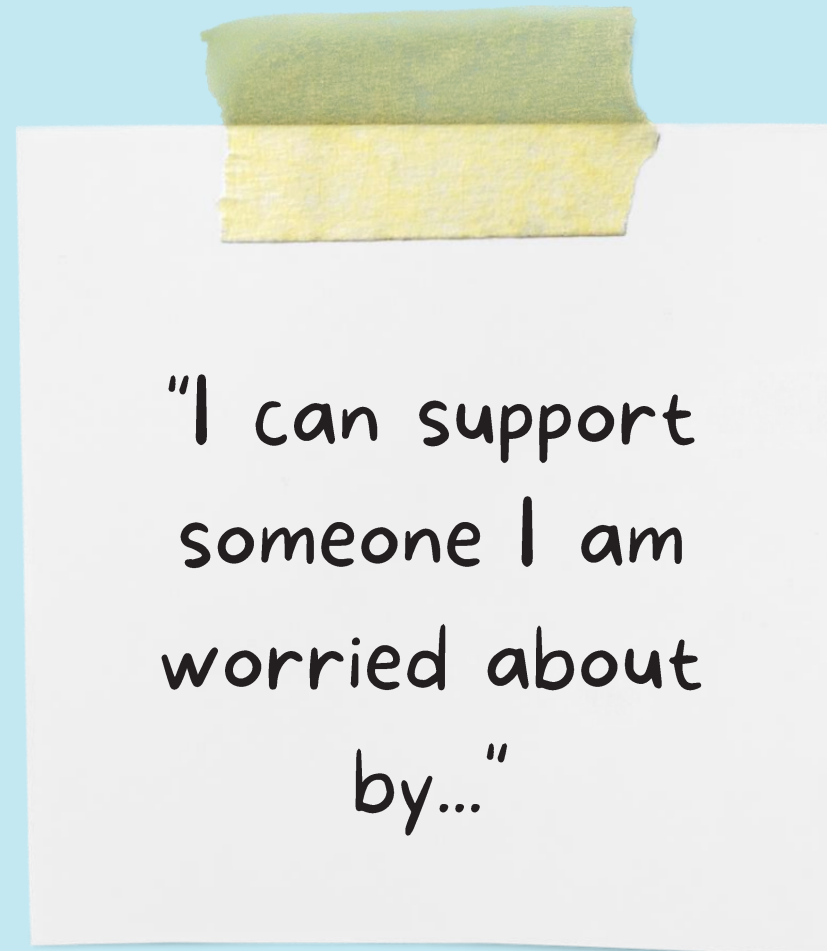




Call to Action!

What can we do to promote
positive, healthy
relationships within our
peer groups?

What will you remember
about relationship abuse
from today's session?





JEWISH WOMEN'S AID

TEACHER TRAINING - CONSENT EDUCATION

ilana@jwa.org.uk

CONSENT AS COMMUNICATION

- Communication skills
- Non-verbal communication
- Talking consent - taboo/awkward
- Key themes: empathy, respect, boundaries, trust



ATTITUDES & IDEAS

Influences are all around us. They shape our ideas and attitudes and influence our understanding of relationships, sex and consent.

What influences contribute to our understanding of what is healthy when we think about relationships?



CONSENT IN CONTEXT

- What attitudes do we hold about consent?
- What attitudes do our students hold?
- How would you respond if the comments were made in the classroom or around school?
- What educational opportunity do you have here?
- How confident do you feel to respond to each of these?



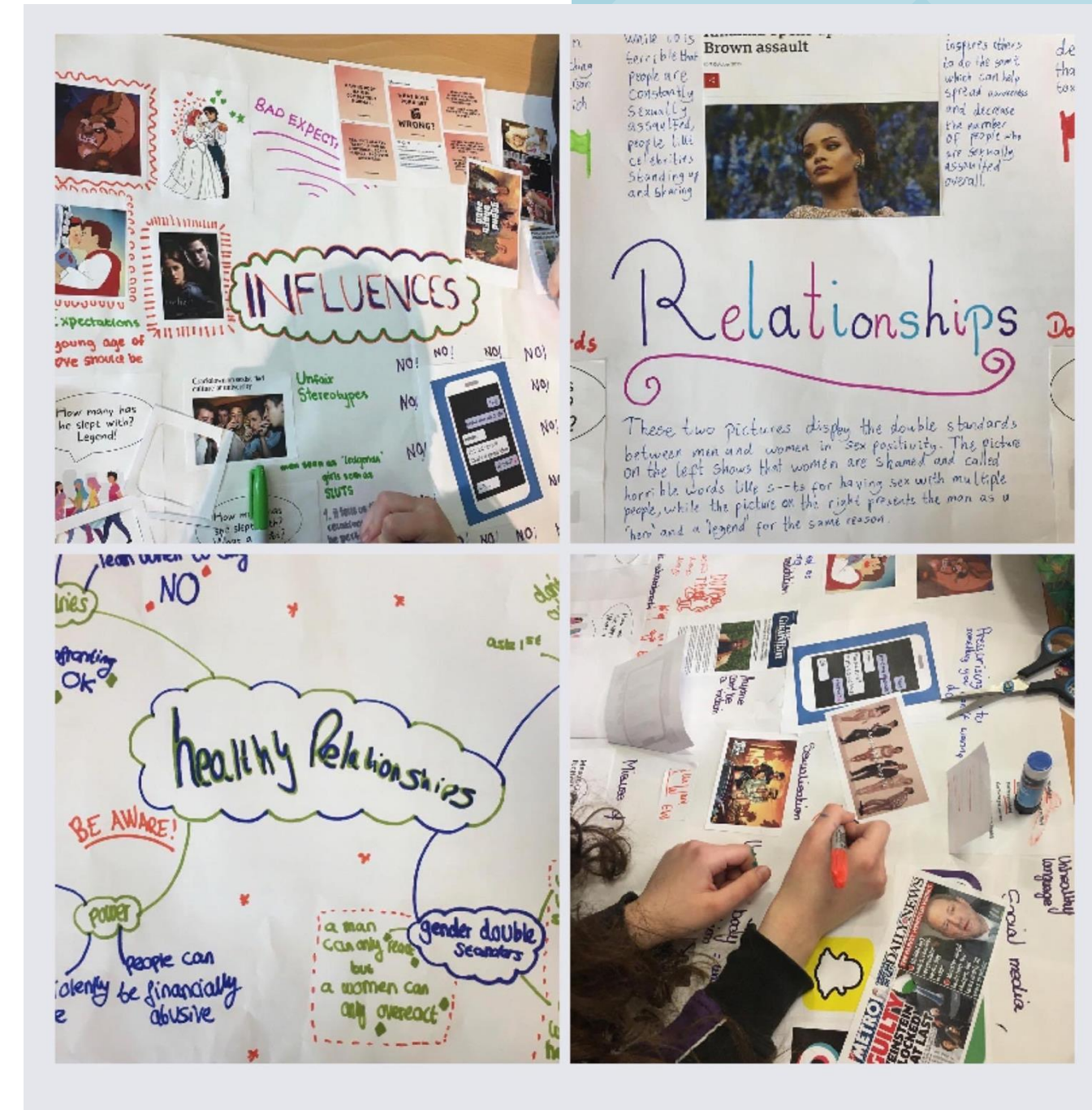
WHAT WOULD YOU DO?

- What incidences might happen across the school to do with consent?
- How might you respond?



BUILDING A CONSENT CULTURE

- High quality consent education
- Call in/Call out/Report harmful behaviours
- Role model language which promotes empathy and respect
- Challenge gender stereotypes and sexist language
- Change the narrative around when talking about safety
- Robust reporting systems in place & support for survivors
- Signposting to specialist organisations





Call to Action!

Get in touch if you'd like to
find out more about the
Ascent Prevention
Programme!

Let others in your school
know about us!

ilana@jwa.org.uk

"How can I book an
Ascent Prevention
workshop or training
for my school?"

CARE
KINDNESS
COMPASSION
TRUST
COMMUNICATION
HONESTY
FRIENDSHIP
BOUNDARIES
FREEDOM
CONSENT
RELATIONSHIPS
LOVE
HEALTHY
RESPECT
SUPPORT