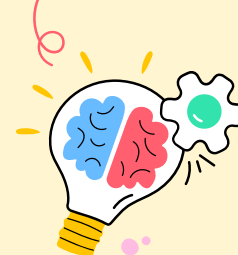


FULL DAY TRAINING ON EMOTIONAL BASED SCHOOL NON-ATTENDANCE (EBSNA)



Course Description:

EBSNA, anxiety-based school avoidance, school refusal, school phobia and school anxiety are just some of the interchangeable terms used to describe CYP who find it challenging to attend school due to the high levels of distress and anxiety they experience. This training provides an exploration into EBSNA, including: What is EBSNA; What is the current prevalence and context surrounding EBSNA; What are the risk factors associated with CYP developing EBSNA; What does theory tell us about EBSNA and How can we support.



RISK FACTORS



Monday 14th October, 9am - 4pm

**The Council Chambers at the
LBH Civic Centre**

[CLICK HERE TO SIGN UP!](#)

This is the last session where
the cost will be:
FREE.

All subsequent sessions will
have an associated cost.



HILLINGDON
LONDON