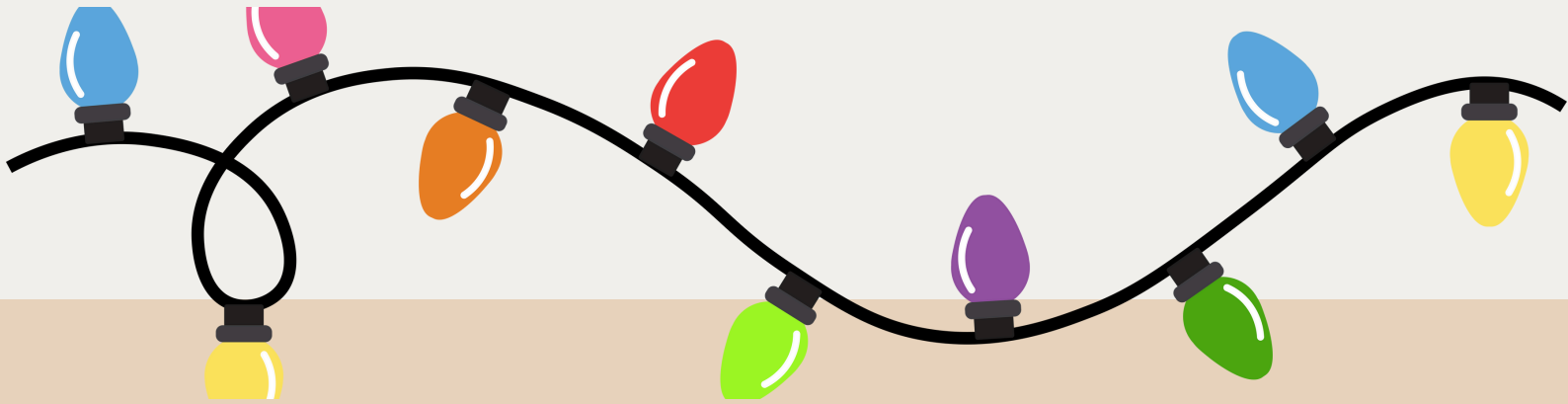




HILLINGDON
LONDON



SEND & INCLUSION NEWSLETTER

DECEMBER 2024, VOLUME 23

Subscribe now

Join our mailing list to
receive the latest newsletter

[Sign up now](#)





CONTENTS

Section 1

Specialist Education Inclusion Service

Early Years

Schools

Parents and Carers - Key Workers

Sensory

Section 2

Educational Psychology Service

Section 3

SEND Statutory Service

Section 4

CITS

Notice Board

Quick Links



SPECIALIST EDUCATION INCLUSION SERVICE

SEND co-production Charter

We want co-production to be a standard way of working together with families and across agencies who support families, so that:
Children, young people and their parents feel confident that their needs are being identified and met that there are more opportunities for families to be involved in shaping services and support.

We have identified 5 values at the core of everything we do to improve the outcomes for children, young people and their families.

SEND Inclusion Network

12th March 2025

1.00pm - 3.00pm

SIGN UP



SEND Co-production Charter- For families and professionals



SEND Co-production Charter- for children and young people

SEND Inclusion Network- Oct 24 Feedback

Interesting

Excited

Encouraging

Brilliant

Improved

Informative



Well Being



FREE Widget wellbeing resources



Five Ways to Well Being

EARLY YEARS



Early Years Evidence Store Assessment tool

The Evidence Store includes six key themes for young children's learning and development. As a living resource, the store will be continually updated with additional evidence, written

examples, and videos.

[Click here](#)



The next SEND Inclusion forum will take place on Wednesday 12th March 2025.

[Register here](#)

The impact of COVID 19 on the outcomes in Early Years



[Click here for practical early years SEND assessment resources that you can use to support children with SEND](#)



Sharing good practice Using manipulatives



miss_e_early_years



miss_e_early_years



Nasen provide DfE funded courses to Early Years Practitioners



If you wish to sign up for a send review for 2025 please sign up below:

<https://forms.office.com/e/LayZ2ZikhG>

Please use the link to Learning Zone to sign up to upcoming courses



SCHOOLS



SEND Inclusion Network

Reminder that our next SENCO forum will take place in virtually on
Wednesday 12th March 2025
[Register here](#)



Upcoming Training: January & February 2025- [Click here](#)



Sharing good practice Working Walls



Autism-Friendly
Christmas tips



SEND and Inclusion Training Brochure
2024/2025



Shout out's!



William Byrd participated in No Pens Day for the second year in a row. We loved how it sparks a conversation about different types of communication; we used it as an opportunity to discuss that some pupils can't communicate in the same ways as us and sometimes we have to find alternative ways! Today, we saw pupils who struggle with written tasks thrive as they acted out stories, made shapes with manipulatives and have whole class discussions! We can't wait for next years event!



[Click here to read
all about the day at
Harlyn Primary](#)



FREE- e-learning
A guide to mental health experiences and the needs of Autistic teenagers



**Government Unveils its
New mental health bill**



PARENTS & CARERS - SEND KEY WORKING



Shout out's!



Big shout out to Yeading Junior School for being the first school to host a round of 'Parent Information, Advice and Support Sessions' for some of their parents who have a child with SEND.

The sessions were run by SEND Key workers and covered:

- The impact of having a child with SEND
- Emotional wellbeing and mindfulness for parents
- Emotional regulation and behaviour strategies for children
- Information about local services and support groups
- Information about parent training and workshops

Parents had an opportunity to support and empower one another and develop friendships. The feedback from both the school and parents was extremely positive. Thank you Mr Hall & Mrs Din for the opportunity.



Upcoming Training for Parents/Carers 2025- [Click here](#)

Parent information sessions



[Click here to find out more](#)



Coffee Mornings

Are you interested in hosting a coffee morning

[Click here to find out more](#)



Contact
svirdee1@hillingdon.gov.uk

Brilliant parents

[Spring 2025](#)
parent/carer support
classes_timetable

[Download
flyers](#)



[Click here to find out more about what SEND keyworkers do](#)



Supporting our families at Christmas

The festive period can be stressful and overwhelming for families of Children and young people with SEND.

[Click here for helpful resources](#)



SENSORY



HEARING SUPPORT

Useful Links

[Learn to fingerspell | Learning BSL \(ndcs.org.uk\)](#)
[Learn to fingerspell | Learning BSL](#)

Videos, posters and postcards to help you learn the British fingerspelling alphabet:

[BSL videos and resources | Learning BSL \(ndcs.org.uk\)](#)
[what-are-you-feeling-resource-digital 2023.pdf](#)

NDCS PDF Resources

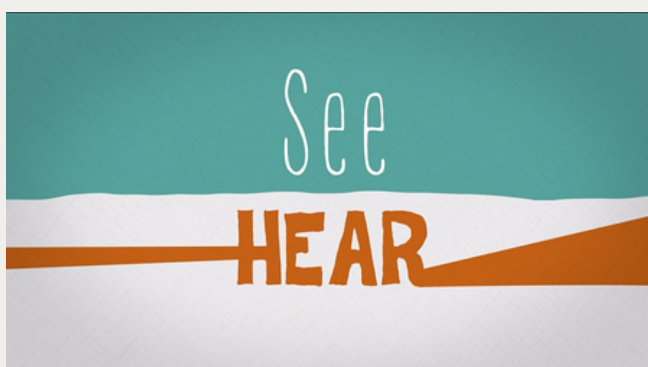
[Deaf Friendly Early Education](#)

[Deaf Friendly Teaching - Primary](#)

[Deaf Friendly Teaching - Secondary](#)

[Deaf Friendly Teaching FE 2020](#)

Deafness is gaining more and more public visibility. If you are interested in deaf news every month, the BBC has a monthly magazine on iPlayer
[Click here](#)



This year, the specialist Deaf Curriculum Framework was unveiled.

This has been a huge undertaking with collaboration across the field and a particular focus on developing confidence in Deaf children and their identity,



[Click Here](#)

Check out this article on the Limping Chicken:
The world's most popular Deaf Blog
[Steps to unlearn Audism \(BSL\)](#)



NDCS Resources

A Reminder from SAS: Hearing Support
The National Deaf Children's Society (NDCS) has comprehensive resources for supporting D/deaf children and young people in education settings

Please click on the websites below:

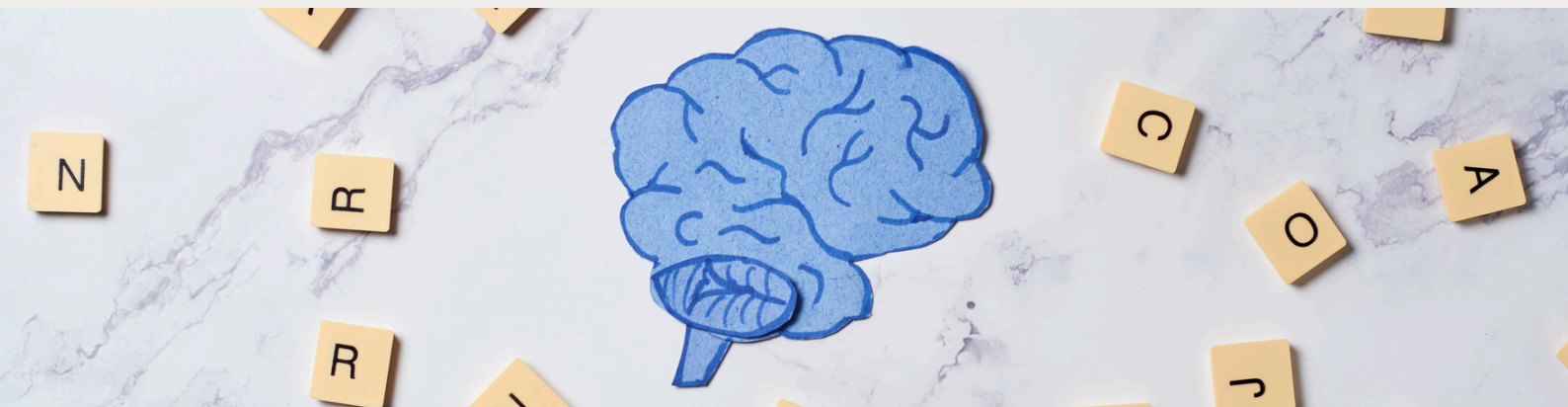
[Early years education | Information for professionals \(ndcs.org.uk\)](#)

[Primary education | Information for professionals \(ndcs.org.uk\)](#)

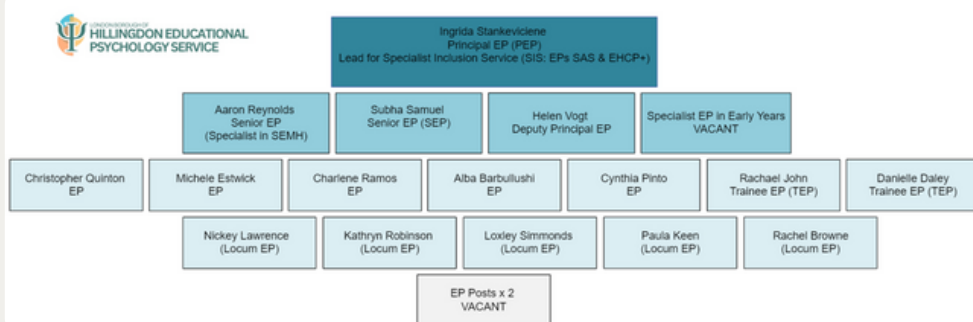
[Secondary education | Information for professionals \(ndcs.org.uk\)](#)

[Professional post-14 resources | Information for professionals \(ndcs.org.uk\)](#)

EDUCATIONAL PSYCHOLOGY SERVICE



Educational Psychology Service Team



EPS Shares:
Please click on the link to access

London's Violence reduction unit
(VRU).

The 50-50 Sync intervention

NEW Ordinarily Available Provision Document

OAP document has been reviewed and is now available on the link below.

Ordinarily Available Provision

OAP checklists are also available on the quick links page.

We have made updates to
Way forward meetings

Please read here

Registration of Interest: ELSA Training 2025

For more info [click here](#) or please email educationalpsychologyservice@hillington.gov.uk for any further information or queries.



Registration of Interest: MeLSA Training 2025-2026

For more info [click here](#) or please email educationalpsychologyservice@hillington.gov.uk for any further information or queries.



SEND STATUTORY SERVICE



HILLINGDON LONDON



MEET THE SEND TEAM

“Meet the SEND Team” drop-in sessions are being held at the **Civic Centre, Committee Room 5**, from **9am to 12:30pm** on the following date:

14th January 2025

Please note these are drop in sessions and you do not need to sign up to attend.



SHARING POSITIVITY

Hillingdon has been outstanding in responding to emails and queries. I requested a meeting with Sheila for support with the AR paperwork, and she was incredibly helpful and informative. She responded very quickly and set up a TEAMS meeting the next day. Her answers were clear and direct, and for any uncertainties, she promised to follow up.

I just wanted to thank you for joining the Annual Review this morning. It's the first time I can remember ever having anyone from the Hillingdon SEN Team participating. I found it really useful to be able to ask questions so thanks for you input.

You have changed our lives and been part of putting such great foundations in there academic years in place.

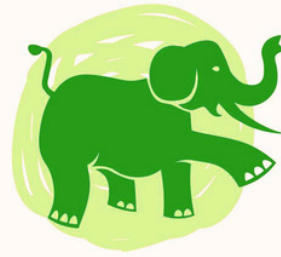
A huge sincere thank you to Hillingdon Education for the support they gave George, the outcome was beyond what I had ever imagined.

Please continue to advise families to contact SENDIASS for impartial support.



Special Educational Needs Disability Information, Advice and Support Service

CITS



Hillingdon
talks | moves | plays
Children's Integrated Therapy Service

[Please click here to view the CITS Training Flyer 2024-25](#)

Please visit the Children's Integrated Therapy Service website: www.cnwl.nhs.uk/children-integrated-therapy-service for information about the service.

This includes strategies and resources for parents and professionals as well as links to other useful websites.



Upcoming Training

Tuesday 14th of Jan 14:00-15:00-
Dysfluency

Wednesday 29th of Jan 14:00-15:00-
Understanding sensory behaviour



CITS have some new and updated presentations/advice sheets now available on the website:

Parent Workshops:

- An updated version of Developmental Language Disorder
- Co-Regulation
- Neurodiversity

School Staff Workshops:

- Speech and Phonology
- Strategies to Support Stammering
- Classroom Language Games
- Transition to Mainstreams School

Advice Sheets:

- Developmental Language Disorder: A New Advice Sheets for Parents and Schools

[To access- Please click here](#)

Did you know?

CITS have a website and are on social media!

[Instagram](#) [Facebook](#) [Twitter](#) [Website](#) [LinkTree](#)

Please check us out for further information, resources and support.

Recent content includes: Signalong signs, Deafness awareness social media account links, tips for supporting deaf children in the classroom, information on parent training sessions, play skills advice and tools for cutting.

Contact details

Children's Integrated Therapy Service (CITS)

Phone: 01895 488 200

Lines are open Monday to Friday (excluding bank holidays)

9am to 5pm

Email: citsadmin.cnwl@nhs.net

NOTICE BOARD

Thrive outside- 5 day residential project for 8-12 year olds



We are pleased to announce that the working group has convened over the past term to discuss the ESF banding review. As a result, the guidance has been updated to reflect these changes, which will be shared in January!

Free Nasen CPD

Click below to view upcoming CPD



Take our survey

We are interested to hear your views on short breaks for disabled children provision in Hillingdon.

Please click on the link provided below to share your thoughts with us and help us improve the service that we offer to you.

<https://forms.office.com/e/18Nkg9dbawC>



Language Link

Speech & Language Link is an award-winning assessment and intervention package, created by Speech and Language Therapists, which helps boost speech and language skills through universal and targeted interventions.

For more information please click [here](#).

To sign up as a Language Link Champion, please click [here](#).

Little Link

Language link are carrying out an early years research study focusing on creating a new early years package- There are still spaces to take part, [Click here!](#)



Take our survey

We are interested to hear from Children and young peoples with SEND. The survey is designed to help understand the support they would like in order to support the boroughs overall drive to improve pupil voice.

Those who take part in this survey will have a chance to win a £10 voucher

SEND young persons voice survey



SEND Youth Forum

We are setting up a group for young people with lived experience of SEND who can help us improve and shape the future of the council and our services.

We will be meeting regularly to:

- Take part in a variety of fun activities
- Talk to professionals about experiences
- Discuss how the council can improve support for you and other children and young people with SEND in the borough.

[For more information- Click here](#)

QUICK LINKS

[Stronger families](#)

[Non-Statutory Funding
Guidance \(Updated May
2024\)](#)

[Hillingdon Banded Funding
Model](#)

[Early Years Inclusion Funding
Guidance](#)

[My Support Plan Advice &
Guidance](#)

[Referrals to SEND Advisory Service via
Stronger Families Hub](#)

[Information for SEND
professionals](#)

[Brilliant parents- Triple P](#)

[EY Strategy Resource Bank](#)

[Early Identification Toolkit](#)

[SAS Advice Line](#)

[SAS Training Brochure](#)

[The OAP Checklist](#)

[SAS Localities list 24-25](#)

[Family hubs and children centres timetables](#)