

Alternative Provision

PROVIDING EARLY INTERVENTION,
POSITIVE ROLE MODELS AND
A RANGE OF PROGRAMMES TO AID
IN A YOUNG PERSON'S SUCCESS

info@lmp-action.co.uk | www.lmp-action.co.uk



LMP ACTION
COMMUNITY INTEREST COMPANY



OUR ALTERNATIVE PROVISION

LMP Action is a Community Interest Company set up specifically to support young people broaden their horizons. We are a social impact organisation that specialises in supporting those from lower socio-economic backgrounds into sustainable, post-16 destinations.

Our Alternative Provision fosters inclusion in mainstream education. We support young people where mainstream education isn't an option. We are experienced in delivering specialist programmes, vocational qualifications and mentoring.

Our Values



Have Compassion



Ensure Equality



Be Inspiring



Take Action

OUR INNOVATIVE OFFER

Through our delivery experience, we have learned 'what works' for young people within an alternative education setting. We have designed an innovative approach that puts the learner at the centre of support.

Our alternative provision is innovative, and we can offer you the following:

A period of co-design during mobilisation involving at-risk young person



We will work with your key stakeholders in testing/refining our offer. This will:

- a) ensure our model genuinely offers something different to you, that meets the needs of those it is designed to support
- b) strengthen our relationships with relevant stakeholders, supporting a more collaborative approach to Alternative Education in your region.



Person-centred approaches, assessing young people's holistic needs and tailoring provision to meet them

Our tutors conduct pre-start interviews with young people to assess their needs/risks across a range of metrics, including attitudes/behaviour, health (disability, learning difficulty, mental health), personal situation (family, housing etc) as well as specific educational needs/goals.

This supports a more in-depth, personalised Individual Education Plan (IEP). IEPs are flexed as needs change, identified via regular reviews, ensuring they always remain relevant to the young person.

We offer taster days and mentoring/coaching prior to a young person joining our programmes, building their confidence and helping us develop the right approach for them.



Small class sizes, and high staff-learner ratios

We create more personal environments where Tutors can focus on each individual and their needs/goals.



We deliver from locations away from the young person's school, creating a safe space and new environment they can be comfortable in.

We have high quality, knowledgeable staff, skilled in working with hard-to-reach young people (e.g. learning needs, disrupted home lives, looked after children).



A flexible curriculum

Our offer has a focus on skills and social development; we offer a range of accredited courses. Our tutors link the curriculum to learners' interests/abilities to engage (as identified in IEP's), adjusting delivery methods to suit needs, e.g., using more visuals/videos, assessing via recorded professional discussion for those who struggle with literacy.

We use technology (providing learners with laptops) to encourage self-facilitated, online learning, and incorporate e.g. sport/leisure activities that complement academic learning/curriculums, ensuring our provision is fun/engaging.

Outcomes focused, particularly around transitions and employability.

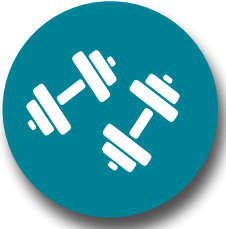
We offer "Brighter Futures;" our in-house life skills programme, and "The Year 11 Online Transition Programme", designed to support transition from school to post-16 provision/employment.



We provide opportunities for practical applied learning experiences and employer encounters, e.g. our Careers Weeks give insights into specific sectors, with inspirational talks from role models, professionals, and industry leaders.

We invite destination stakeholders (e.g. colleges, training providers) to come into our centres and meet young people before they 'graduate', improving access to/minimising gaps between opportunities (maintaining motivation).

We can link into apprenticeships (via sister company LMP Education, national apprenticeship/traineeship provider) and have our own apprenticeship pathway for learners who complete a level 1 or 2 qualification, progressing them into e.g. Teaching Assistant, Business Administration apprenticeships



Supporting wider health/crime outcomes

We encourage learners to talk about their interests/strengths, promote the benefits of regular exercise/sport and signpost to community support/activities. We alter timetables to provide smaller groups or afternoon sessions to combat social anxiety issues (increased through Covid).



Linking with multiple agencies

To access specialist support, including counselling, peer mentoring (positive role models), mental health, employability and align delivery with e.g. social services, Youth Offending Services, Jobcentre Plus.

We work closely with schools to identify those at risk of being excluded and co-design interventions/support to reduce the risk of that happening.

We work closely with Councils to expand/tailor our provision to include locally relevant enrichment activities e.g., transition camps, holiday activities, food provision.



Tracking and reporting progress

IEPs include tangible learning outcomes that fit the young person's needs/ambitions (e.g. return to school, qualification), plus targets for:

- 1) *engagement*
- 2) *communication*
- 3) *behaviour*
- 4) *attendance*
- 5) *punctuality*

OUR QUALIFICATION OFFER

A wide range of accredited BTEC Qualifications from vocational areas including **Sport, Public Service** and **Business**



Asdan Personal Development program in areas such as **Enterprise, Team work** and **Volunteering**



Courses to support **Life skills, Work skills** and **Employability** as well as **Careers advice** and **Work Experience** and **Restorative Personal Development 12-week programme**





LMP ACTION
COMMUNITY INTEREST COMPANY

ALTERNATIVE PROVISION OUR IMPACT

6500

**DELIVERY
HOURS IN THE
LAST ACADEMIC
YEAR**



**NATIONWIDE
COVERAGE**

**12-16
YEAR OLDS**

**SPECIALIST
ALTERNATIVE
EDUCATION
PROVISION BY
LMP ACTION**

**SINCE 2014, WE
HAVE SUPPORTED**

1000+

12-16 YEAR OLDS

500+

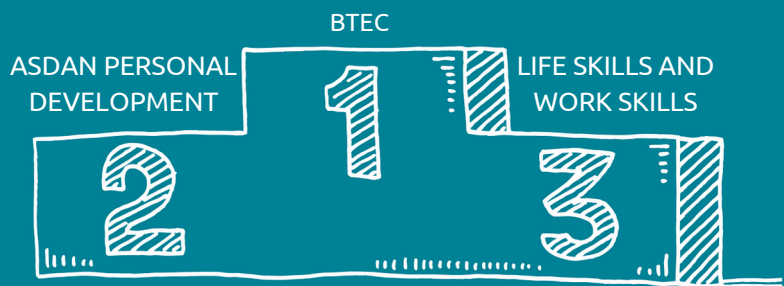
**LEARNERS ACHIEVED
A QUALIFICATION**

MOST POPULAR COURSES...



85%

**LEARNERS MOVED
INTO POSITIVE
DESINTATION**



80%
**GAINED ACCREDITED
QUALIFICATION**

**MORE INFORMATION ON
ALTERNATIVE PROVISION**

info@lmp-action.co.uk
www.lmp-action.co.uk





HOW WE WILL SUPPORT YOU



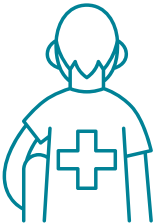
Highly-qualified staff who have enhanced DBS checks. Our staff are also trained in first aid and safeguarding.



Safe venues that are vetted and risk assessed. We choose the best external locations to boost engagement of the young people we work with. Our sites offer a relaxed yet positive learning environment.



All the data you require - our Operations Team monitor daily attendance and diagnostics about the student. We will share daily attendance with you.. We will share daily attendance with you.



Resolve any incidents and/or safeguarding concerns in a timely manner. We hold intervention meetings depending on the severity of the incident to ensure a solution can be reached.



We will provide you with a learner tracker report so you can monitor each student's progress.



Free consultation within 24 hours to find a bespoke solution.





OUR TESTIMONIALS



We have received positive feedback from the schools we have worked with, parents, and learners. They recognise the meticulous detail, organisation and preparation that goes into the development of our alternative education provision. This allows each young person to learn new skills, gain valuable experiences and ultimately have fun!

Deputy Head IOS


“ LMP have been incredibly communicative and accommodating to our school's needs. Our students are thriving there and we have full confidence in LMP for the holistic development and care of them. We are excited to see the results.

AP parent

“ I wish I could put a score higher than 5, LMP has changed Ellie's life. She was heading for failure and distress, now she's happy, confident, and going to leave Y11 with some qualifications and opportunities.

AP learner

“ I like to come to LMP because the environment is more calm than School. I get lots of support with my work and how I feel. It's much better for me than School.



Alternative Provision



LMP ACTION
COMMUNITY INTEREST COMPANY

info@lmp-action.co.uk
www.lmp-action.co.uk

