



HILLINGDON  
LONDON

# SEND & INCLUSION NEWSLETTER

MAY 2025, VOLUME 24

## SEND Inclusion Network

Schools and Early Years

Provides

11th June 2025

12.30pm – 4.00pm

SIGN UP

**Subscribe now**

Join our mailing list to  
receive the latest newsletter

[Sign up now](#)



The Inclusion Network for Education is an initiative designed to foster collaboration and professional growth within the education sector. It provides a forum for a diverse group of professionals, including: Early Years Providers, Teachers, SENCOs, Inclusion Managers, Assistant Headteachers. Key Benefits are: Professional Development, Collaboration and Idea Sharing, Generating Solutions, Support and Networking.



# CONTENTS

## Section 1

**Specialist Education Inclusion Service**

**Early Years**

**Schools**

**Parents and Carers - Key Workers**

**Sensory**

## Section 2

**Educational Psychology Service**

## Section 3

**SEND Statutory Service**

## Section 4

**CITS**

**Notice Board**

**Quick Links**



# SPECIALIST EDUCATION INCLUSION SERVICE

## WALKING IN OUR SHOES

James and Dillon are incredible examples of transformation, having turned their lives around for the better. Previously excluded from school and experienced criminal exploitation, they were once deemed high risk. Now, they both work for the council and serve as shining examples of hard-working young people, proving that change is possible.

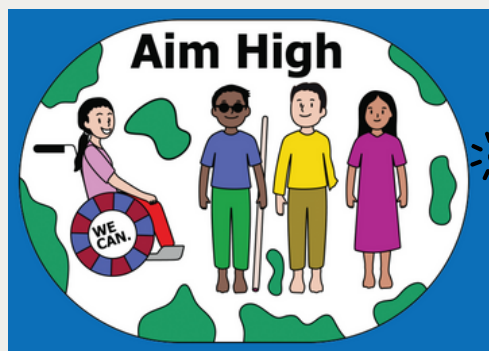


## SEND Inclusion Network- March 25 Feedback

**Powerful** Moving *Reflective*  
*Helpful* *Insightful* **Interesting**  
*Great* **Inspirational** *Useful*  
*Knowledgeable* *Emotional* *Informative*  
**Interactive** *Enjoyable* **Excellent**  
*Celebrating success*

**You said, We listened**

**Brief:** Soft start 12.30 to 1.00 - soft end 3.30  
- 4.00 pm light lunch will be provide.



SEND Co-production Charter- For families and professionals  
SEND Co-production Charter- for children and young people  
March 2025 Presentation



# EARLY YEARS

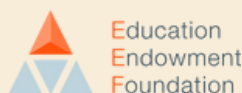


## Early Years Evidence Store Assessment tool

The Evidence Store includes six key themes for young children's learning and development. As a living resource, the store will be continually updated with additional evidence, written examples, and videos.



[Click here](#)



If you wish to sign up for a send review for 2025 please sign up below:

[SIGN UP](#)

[Click here for practical early years SEND assessment resources that you can use to support children with SEND](#)



The impact of COVID 19 on the outcomes in Early Years



## Signalong Training March 2025



Signalong is a sign supported communication system for children with additional needs to support them in developing their speaking and understanding. This course is designed both for beginners and experienced signers. The foundation course consists of theory and practical based learning. We will cover symbolic understanding and generalisation.

**New dates coming from September 2025**

# SCHOOLS



## SHARING GOOD PRACTICE

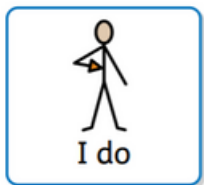


‘I do, We do, You do’

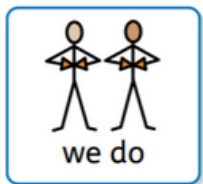
Shared by Pinkwell Primary school



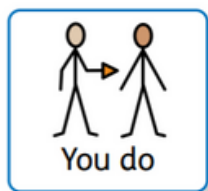
Pinkwell Primary School have been implementing the ‘I do, We do, You do’ model to support and scaffold their CYP learning.



- "I do" phase, where you demonstrate how to do something step-by-step, so students can see how it's done.



- "We do" phase, where you and the class work through it together. This gives students a chance to ask questions and practice with your support.



- "You do" phase, students try it on their own, using the skills they've learned. It's a great way to build their confidence and ensure they fully understand before going solo.

I do, We do, You do- strategy Pinkwell Example 1 Pinkwell Example 2  
resource



Why is it essential to consider students' Language Skills in year 7



SEND and Inclusion Training Brochure 2024/2025

Autism and  
catastrophising

Toileting and  
Autistic children



Autism assessment  
waiting times





# PARENTS & CARERS - SEND KEY WORKING



## Parent/carer coffee mornings

Since November 2024, we have had the privilege of attending over 15 SEND Parent Coffee Mornings in various schools. These events have provided us with valuable opportunities to discuss the support our service offers and the resources available in Hillingdon for children and young people with SEND.

It has been a genuine pleasure to connect with families and schools in such a relaxed and welcoming environment. The feedback has been overwhelmingly positive, and we have seen an increase in families reaching out for support.

We extend our heartfelt thanks to all the schools for hosting these events and for your continued support.

Upcoming Training for Parents/Carers 2025- [Click here](#)

### Families Roadshow at Ruislip Manor Library

In February, the council hosted its inaugural Families Roadshow event. This free event aimed to help families connect and learn about council services and partners. The SEND Advisory Service had an information stall showcasing our work and providing useful resources. The event also featured engaging talks, activities, and interactive demonstrations.



### Transition resources/tip sheets

[transitions-info-CDC-002.pdf](#) -  
Council for Disabled Children -  
EY Toolkit  
[top-ten-tips-for-parents.pdf](#) -  
Young Minds  
[Parent tips for transition](#) - SEND  
Matters UK

[Click here to find out more about what SEND  
keyworkers do](#)



### Supporting our families with the transition to Secondary School

Moving from primary to secondary school and be a big jump for many autistic children.

[Click here for helpful resources](#)



# SENSORY



## Supporting your children at home

Many SEND professionals are interested in empowering parents to support their children with sensory impairments and other learning difficulties to play and learn alongside their children, developing the child socially and fostering a deeper connection with everyone they meet.

Linden Lodge has developed '[The Sensory Classroom](#)' linked to YouTube where you will find information, resources and ideas.

## Deaf Meet and Greet 2025

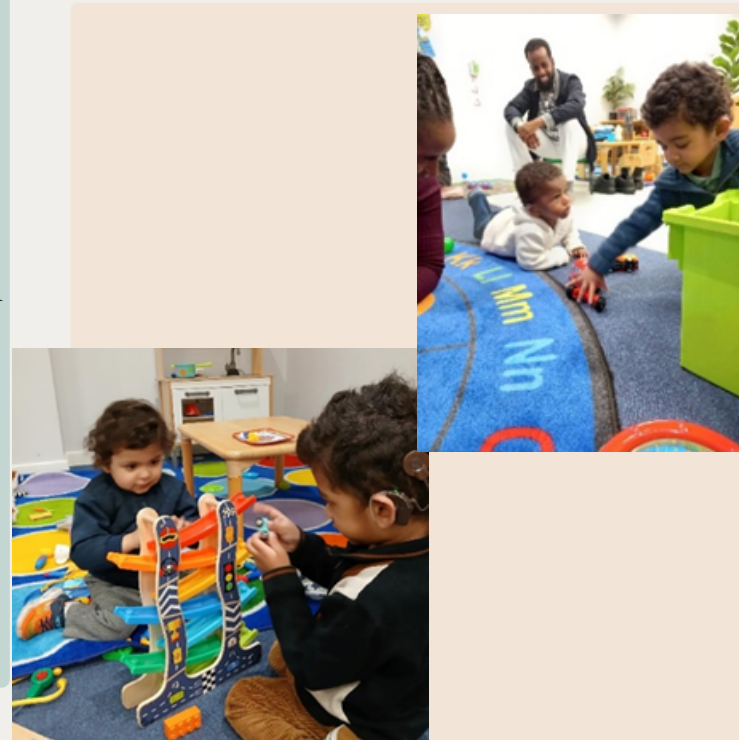
The Hearing Support team and Hillingdon CHSWG hosted the 'Deaf Family Meet and Greet', connecting families and professionals to share experiences and explore support resources. Attendees discussed future aspirations and the impact of technology on their lives.



## Chattertots

Chattertots, for children diagnosed with a hearing need and their families, has been more popular than ever.

Sessions take place every other Thursday morning from 10:00 AM to 11:30 AM. For further details, please email [sassensory@hillingdon.gov.uk](mailto:sassensory@hillingdon.gov.uk)



## MeLSA Training 2025-2026

MeLSA is a six-day training and supervision programme that builds the capacity of schools to support the learning needs of their pupils, equipping MeLSAs with the skills to assist children and young people in becoming more skilled and independent learners. For more details:

**Click here**

You can express your interest to the above via Traded Offer link, which will be shared on the 2nd of June.



## Ordinarily Available Provision Document

OAP document has been reviewed and is now available.

Ordinarily Available Provision

OAP checklists are also available on the quick links page.

**OAP workshops will be offered to schools from  
September 2025**

## EPS Shares:

HALO Play Cafe

50 50 Sync  
Intervention

Hillingdon Educational Psychology Service (EPS) has developed a comprehensive offer of support to our community of schools and other settings. This includes our Traded EPS offer that provides several 'packages of support' that can be purchased to meet the individual needs of your setting.

[educationalpsychologyservice@hillington.gov.uk](mailto:educationalpsychologyservice@hillington.gov.uk)

Traded Offer 25/26 will go live on the 2nd of June.



# SEND STATUTORY SERVICE



HILLINGDON  
LONDON



## MEET THE SEND EHCP TEAM

“Meet the SEND EHCP Team”  
drop-in sessions are being  
held at the **Civic Centre**

**We are really keen to meet  
you and get to know you all**

More dates coming soon!



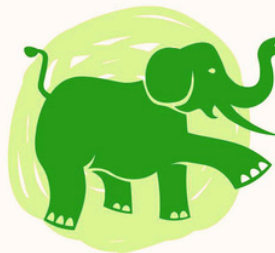
Please continue to advise families to contact SENDIASS  
for impartial support.



## PRIMARY PHASE TRANSFER 2025

- EHCP amendments were completed on time in 100% of cases, an improvement from 98% last year meaning full compliance.
- 73% of children were placed according to parental preference (first and second choices), with over half securing their first choice of school.
- 51% of children were placed in mainstream schools, while 35% were placed in specialist schools, a slight decrease from last year.
- 4.5 IMNSS placements were named, all of which were continuations, with no new placements. This represents a 0.2% decrease from 2024 in naming INMSS, despite 24 first parental preferences for independent placements, many of which had costs in the £100k range.
- The EHCP Team successfully placed 85% of children requiring mainstream schooling in local Hillingdon secondary schools, including Specialist Resource Provisions (SRP) for Key Stage 2 to Key Stage 3 transfers.
- We have seen 6 pupils move from maintained special schools into mainstream schools for secondary transfer.

# CITS



**Hillingdon**  
**talks | moves | plays**

Children's Integrated Therapy Service

**Please click here to view the  
CITS Training Flyer 2024-25**

Please visit the Children's Integrated  
Therapy Service website:

[www.cnwl.nhs.uk/children-  
integrated-therapy-service](http://www.cnwl.nhs.uk/children-integrated-therapy-service) for  
information about the service.

This includes strategies and resources  
for parents and professionals as well as  
links to other useful websites.



## Contact details

Children's Integrated Therapy Service (CITS)

Phone: 01895 488 200

Lines are open Monday to Friday (excluding bank holidays)

9am to 5pm

Email: [citsadmin.cnwl@nhs.net](mailto:citsadmin.cnwl@nhs.net)

**CITS have some new and updated presentations/advice  
sheets now available on the website:**

### Parent Workshops:

- An updated version of Developmental Language Disorder
- Co-Regulation
- Neurodiversity

### School Staff Workshops:

- Speech and Phonology
- Strategies to Support Stammering
- Classroom Language Games
- Transition to Mainstreams School

### Advice Sheets:

- Developmental Language Disorder: A New Advice Sheets  
for Parents and Schools

**To access- Please click here**

### Did you know?

CITS have a website and are on social media!

[Instagram](#) [Facebook](#) [Twitter](#) [Website](#) [LinkTree](#)

Please check us out for further information, resources and support.

Recent content includes; Signalong signs, Deafness awareness social media  
account links, tips for supporting deaf children in the classroom, information  
on parent training sessions, play skills advice and tools for cutting.



# NOTICE BOARD

Whole School SEND is a consortium of charities, schools and organisations. Committed to helping children and young people with special educational needs and/or disabilities (SEND) or learning differences reach their full potential.

We offer CPD on a wide range of topics, hosted by our regional lead teams and a range of guest speakers from the world of education. All our CPD is fully funded by the Department for Education and free to attend



## World Autism Day

Wed 2nd of April 2025

World Autism acceptance month is a time to come together, raise awareness and foster understanding for the Autistic community. This year the National Autistic society are focusing on acceptance in the work place.



[Click here for the guide](#)

## Language Link Champion Networking Event

On Tuesday 4th February our wonderful Language Link Champions met for our Spring Term Language Link Event. It was a wonderful morning where staff were able to come together and share their practice and ideas. We were also incredibly lucky to be joined by Language Link Speech and Language Therapist Emma Price. She shared an informative and incredibly useful presentation on the how to and the benefits of the package as well as supporting with specific queries to support our settings.



Thank you to all those who attended and for all your hard work you are doing! [SIGN UP!](#)



## Elklan Training 3-5's and



### 5-11's- Book Now!

Elklan provides effective and accessible training to ensure everyone in a child's network can support the development of children's speech, language and communication.

For more information click here

[3-5's Flyer](#)

[5-11's Flyer](#)

You can sign up via the **Hillingdon Learning Zone** - note learners, must sign up with their own details.

Please contact me if you have any questions: [hcasey@hillington.gov.uk](mailto:hcasey@hillington.gov.uk)

## Guide Dogs My Time To Play Virtual Sessions 2025 for children with a vision impairment aged 0-4

Guide Dogs offer fun and supportive group sessions to help your child develop the practical skills and confidence to explore their world. Sessions run for seven consecutive weeks:

Wednesday 2<sup>nd</sup> July 10.30-11.30 a.m.

Friday 5<sup>th</sup> September 10.00-11.00 a.m.

Friday 23<sup>rd</sup> October 10.30-11.30 a.m.

Sign up for our My Time to Play virtual programme by calling 0800 781 1444 or by using the online enquiry form



# QUICK LINKS

[Stronger families](#)

[Non-Statutory Funding Guidance](#) (Updated May 2024)

[Hillingdon Banded Funding Model](#)

[Early Years Inclusion Funding Guidance](#)

[My Support Plan Advice & Guidance](#)

[Referrals to SEND Advisory Service via Stronger Families Hub](#)

[Information for SEND professionals](#)

[Brilliant parents- Triple P](#)

[EY Strategy Resource Bank](#)

[Early Identification Toolkit](#)

[SAS Advice Line](#)

[SAS Training Brochure](#)

[The OAP Checklist](#)

[SAS Localities list 24-25](#)

[Family hubs and children centres timetables](#)