



AXIS MONTHLY BULLETIN

MAY 2025



Trends and Themes

AXIS has observed an increase in offences coming through via police custody on a daily basis, offences include Robbery and GBH related incidents and sexual assaults.

Observations around dats from March 2025 to May 2025

178 children identified at risk of CCE (Child Criminal Exploitation).

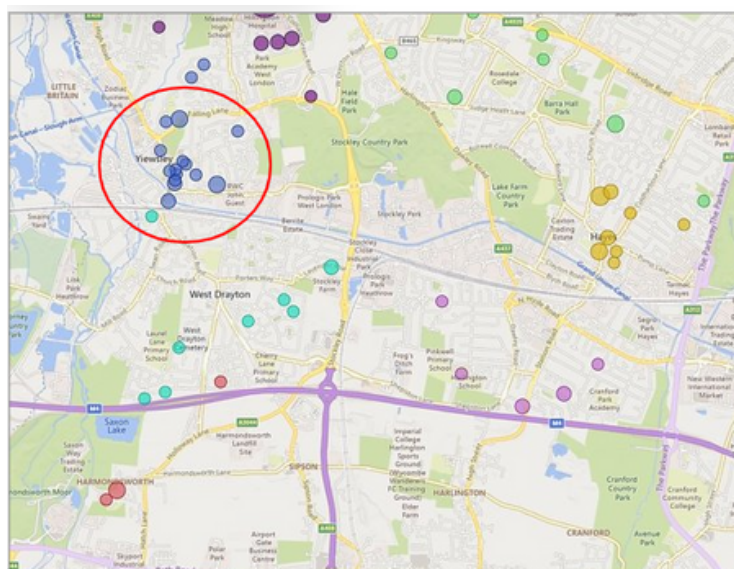
The average age was **17yrs** old and the youngest child was **10yrs** old.

190 pieces of information received from partner agencies across Hillingdon, this includes intelligence as well as incidents reported.

80% of those who came to attention were boys.

16 children were on a **CIN** (Child in Need) plan, **7** children were **CP** (Child Protection) and **29** children were **LAC** (Looked after Child).

Areas of concern heat map



SERIOUS YOUTH VIOLENCE (SYV)

Reports of **ASB increased** by **40%** in comparison to the last 3 months.

SYV/ASB remains a key main theme. Actual incidents have decreased by **15%**. Recent intelligence picture supports the reality that more children are **carrying weapons**.

Hayes remains an area of concern, with some excellent work ongoing from **Kirsty DeSouza** and **AXIS case workers** to reduce the number of incidents across Hayes.

Yiewsley High Street and **West Drayton** have been identified as areas with increasing number of incidents involving young people. **AXIS** continues to work with young people within those areas to divert away from offending and poor behaviour.

Children involved range from **11yrs to 16yrs**.

Since **February** there have been a total of **4 stabbings**, one of which was an adult victim. There has been a **decrease** in reference to **Gang Activity** in intel shared and referrals.

RESPONSE TO SYV

AXIS case workers are working in **several** of the schools across Hillingdon, including a recent pilot in Primary Schools to better support **early intervention**.

AXIS continue to collaborate with Community Safety, Police, Localities, Education and Social Care to address the concerns within the **Yiewsley** and **West Drayton** area.

CHILD SEXUAL EXPLOITATION (CSE) AND VIOLENCE AGAINST WOMEN AND GIRLS (VAWG)

There has been an **increase** in the number of incidents and intel shared which is being shared in relation to **CSE** since the previous bulletin.

13 of the **178** children were linked to **CSE**. Recent theme and concern is a potential **increase** in **Sexual Assaults** on girls.

6 pieces of intel relating to **Sexual Assaults** was received. **80%** were **girl victims**.

Social media remains the main risk, with young girls being contacted through these sites as the main theme.

Uxbridge, Cowley and Hayes remain the most common areas linked to these children.

RESPONSE TO CSE

CSE has been raised across all platforms and has been discussed at the Strategic High Risk Panel. **AXIS** continue to work in partnership with **CSE** lead at the **Metropolitan Police**.

AXIS continue to work in partnership with **KISS** and other services.

POSSESSION WITH INTENT TO SUPPLY (PWITS)

25 Children were identified to be linked to **PWITS** incidents.

Hayes, Uxbridge and West Drayton remain areas of concern overall.

Continued concerns around the **variety of drugs** being accessed by young people, including Cannabis, Balloons, Ketamine, Edible Cannabis sweets and MDMA.

COUNTY LINES

There have been **4** unrelated mentions of **County Lines** since **March 2025** across several areas **outside of London**.

RESPONSE TO PWITS

AXIS continue to ramp up delivery of awareness workshops in schools and hospitals across Hillingdon. Partnership work continues in collaboration with **SORTED** to offer support to many of the young people encountering substance misuse.

Ketamine



Sold as a grainy white or light brown powder. Looks similar to cocaine but is a very different drug.

Cannabis Edibles



Cannabis edibles are food or drink items made with cannabis or cannabis oils.

MISSING PERSON (MISPER)

18 children have been reported missing since **March** resulting in **39 missing episodes**.

60% of children reported missing were **girls** with average age being **16-17yr olds**. The main theme is going missing with a friend, visiting a boyfriend, going out or being located at a family members address.

Friday and Monday are days which have seen an increase in young people being reported as missing. The average number of days missing is **7 days**.

RESPONSE TO MISPER

AXIS continue to work in partnership with other agencies and services, to help **reduce** the number of young people being **reported missing** and improve the standard of reporting by all partners.

PROFESSIONAL CURIOSITY

When a child is reported as missing, **AXIS** actively encourages all partner agencies to use our professional curiosity on the return home to explore the **‘absence of the normal and the presence of the abnormal’** for example does the child have food, safety, have their basic needs been met (absence of normal), or do they have expensive gifts on their person which they wouldn’t normally have? do they have extra money? Do they have expensive trainers or jewellery? or make up? (presence of abnormal).

Using **professional curiosity** can allow us to complete the missing part of the jigsaw and can identify a child at risk of exploitation and start the process of the child receiving support.

