

# Family Help



Hillingdon Head Teachers'  
Termly Meeting - 09 June  
2026



# Case for Reform

## The case for reform



### The Competition and Markets Authority study into Children's Social Care Placements

March 2022



### National Review into the murders of Arthur Labinjo-Hughes and Star Hobson

May 2022



### Safeguarding Children with Complex Health Needs in residential Settings.

April 2023



### The Independent Review of Children's Social Care

May 2022



### The Report of the Independent Inquiry into Child Sexual Abuse

October 2022



### The Families First Partnership (FFP) Programme Guide

March 2025

## Prevent.

1

Children should remain with their families and supported to thrive and be safely prevented from entering the care system wherever possible.

## Support.

2

Where children cannot remain at home, we should support children to live with kinship carers or in fostering families. We will also improve support for care leavers.

## Fix the market.

3

Placements for children in care should be first and foremost, homes for young people to live in and we must bring a swift end to excessive profit making.

## Key enablers.

4

Investing in key enablers which underpin the system – workforce, better data & information sharing, evidence-based programmes and the National Framework.

# Family Help

How Family Help Works in Practice

Locality-based delivery (North, South West, South East)

Consistent team model across areas

Flexible step-up and step-down support

Shared responsibility across professionals

Clear communication with partner agencies

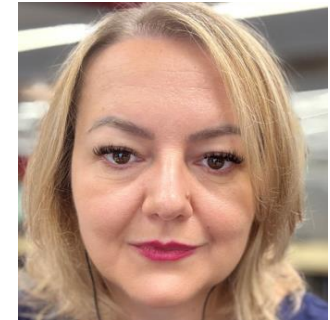


\*any homeless families with no recourse to public funds arriving via Heathrow airport will be allocated to the North locality

<u>Service Managers</u>	
North Locality	Tarnya Lee
South West	Margareta Draghicescu
South East Locality	Paul Johnson



North - Tarnya Lee



South West - Margareta Draghicescu



South East - Paul Johnson



# Updates since transformation

---

Stabilising our workforce with recruitment.

---

Continue to strengthening relationships with partner agencies.

---

Upskilling our practitioners

---

Partner agencies attending Service Meeting for locality areas.

---

Working with Business Intelligence across our data.

---

Working with transformation around policy, procedures and pathways.

---

Piloting Magic Notes

---

Reviewing practice

---

# Family Help

- Managers increased focus on needs for children and families.
- Identifying who is best placed to support our families.
- Delivering training for our internal colleagues on assessment and thresholds.
- Evidenced based decision making.
- Family Group Decision making – we know of the imperative to empower our parents and strengthen their wider relations for our children and young people.





## What's improved so far?

---

Families receive support at the right time.

---

There is a stronger focus on prevention and early support

---

Improved joint working internally.

---

Better links with health, education and housing.

---

Increased engagement with families attending children's centres.

---

More community-based solutions being explored.

---

Family having a consistent worker.

---

# What this means for partner agencies?

---

- EARLIER CONVERSATIONS ABOUT EMERGING CONCERNS
- CLEARER PATHWAYS INTO FAMILY HELP
- REDUCED DUPLICATION AND HANDOVERS
- JOINT PLANNING AROUND FAMILIES
- SHARED OWNERSHIP OF OUTCOMES

# What's next?



Continue to review and embed the model.



Strengthening locality-based relationships.



Listening to partner feedback.



Regular agency meetings and networking



On-going learning and service improvement.



Development of Family Help Strategy



---

# Thank you

Any questions?