

## Our Services to Children and Young People

Our services provide a support pathway for children and young people from the very first point of being a victim of crime, through to supporting those required to give evidence in court and continuing this support after the trial until outcomes have been met.

Our model focusses on reducing Risk factors, increasing Protective factors and Resilience levels, therefore supporting children and young people to be:

- safer and less fearful
- less likely to be re-victimised
- less likely to engage in risky behaviours
- more likely to move on from their victim experiences and effect positive change.

Victim Support is committed to working alongside children and young people, involving them in decision making through youth forums, consultations and co-design of services.

We also work alongside other children's agencies as part of a wider multi-agency framework, to deliver high quality services for children and young people.

**You & Co** is Victim Support's youth programme that helps young people cope with the impact and effects of crime.

[www.victimsupport.org.uk](http://www.victimsupport.org.uk)

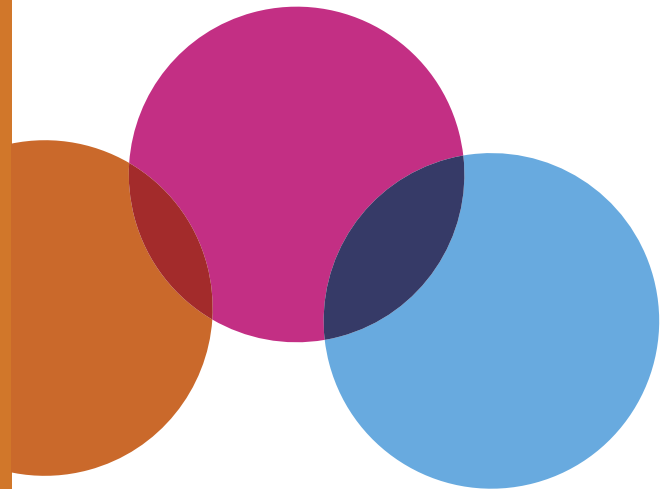
Registered charity number 298028

Registered address: Victim Support, Hallam House,  
56-60 Hallam Street, London W1W 6JL

# Children and Young People's Service

Support for young victims aged 4-17 in London

Information for professionals



COPING WITH THE  
EFFECTS OF CRIME  
TOGETHER



## What is the Children and Young People's Service?

We work with any child or young person who has been affected by crime. (The crime does not have to have been reported to the police).

We are part of Victim Support (VS), the national charity for victims and witnesses of crime.

We are an independent charity and will only work with children and young people where they have agreed to the support. A young person aged 13 and above can consent to their own support, but we would always encourage shared consent where it is safe to do so. Please ensure you have consent before making a referral.

## What does the CYP support look like?

Our trained caseworkers work on a one-to-one basis with children and young people providing support in a confidential space that suits them. The support could include:

- Phone support or face-to-face time
- Someone to talk to about what happened in confidence

- Help build their confidence and resilience after the crime
- Answering any concerns or questions they may have after the crime
- Agree a safety plan - which could include the provision of a personal alarm
- Support through the whole criminal justice process
- Liaison with other professionals involved with the child, young person and their family as well as the police
- Referrals onto other specialist support for children and young people.

## How can you refer a child or young person for support?

**Call us: your local office on 0808 168 9291 or our national Victim Supportline on 08 08 16 89 111. All calls are free.**

**Text us: by adding 18001 before the above phone numbers.**

**Go online: at [www.victimsupport.org.uk](http://www.victimsupport.org.uk)**